

CASE STUDY



Large Component Handling

Atlas Copco Group



CASE STUDY

Large Component Handling



Atlas Copco, a global leader in sustainable industrial productivity solutions, serves a wide range of industries including automotive, aerospace, and energy. In their New Hudson, MI, facility, Atlas Copco USA builds adhesive dispensing equipment for both automotive and non-automotive sectors, maintaining their commitment to operational excellence and worker safety. Atlas Copco recently identified an opportunity to enhance ergonomic efficiency of a production process at the New Hudson location that involved workers removing heavy parts from shipping containers.

Atlas Copco sought to improve worker safety and ergonomics by utilizing a customized solution from Unified Industries. A portable steel mobile gantry was designed to meet the application needs to improve the process flow and worker safety while achieving autonomy and energy independence. By implementing the Unified solution, the process has been optimized so a single person can now handle the equipment.

PRODUCTS

- **Unified Industries Custom Mobile Gantry Crane**
- **CM® BatteryStar Battery-Powered Chain Hoist**

CHALLENGE

- **Develop a modern lifting solution to assist with repeatable tasks**
- **Improve ergonomics and ease of use for operators**
- **Create a mobile solution independent of fixed power**

SOLUTIONS

- **Unified Industries provided a custom-designed and built mobile gantry crane tailored to the specific handling needs**
- **Eliminated the need for manual lifting, significantly reducing the risk of back injuries**
- **Expert guidance and support ensured seamless integration into the environment**

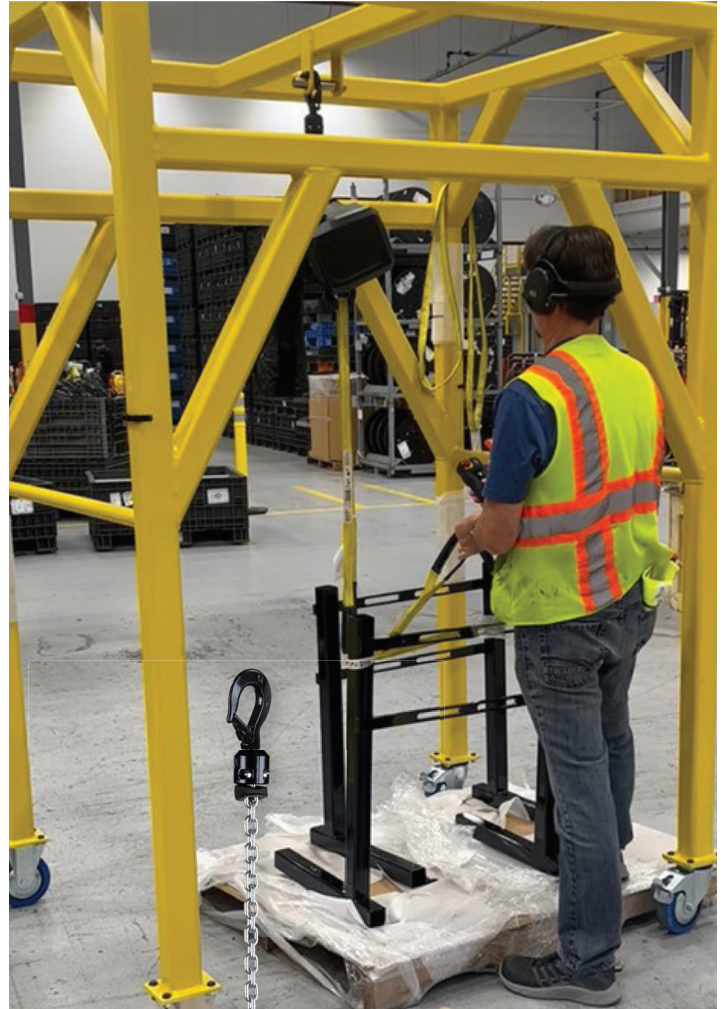
Unified Industries was able to develop a tailored solution combining a custom-designed mobile gantry crane and the CM® BatteryStar Battery-Powered Chain Hoist. This innovative setup allowed Atlas Copco to:

- Straddle the box and parts drop-off point with the gantry crane
- Safely and efficiently transfer the part to the designated location
- Use the BatteryStar hoist to lift the part high enough to clear the box edge
- Move the gantry crane in and out of the demo area as needed

Unified proposed a concept for the solution, conducted field checks for dimensional and vertical travel needs, and coordinated with their internal engineering team. Collaborating directly with Atlas Copco, the proposed gantry crane design was finalized, built, and installed.

An adjustable enclosed track aluminum gantry crane is an ideal solution anywhere lifting equipment is required on an infrequent basis. Large locking casters allow the gantry to be moved with ease and out the way when not in use. Also selected for its mobility and eliminated reliance on a fixed power source, the BatteryStar hoist aligned perfectly with the flexibility of the gantry crane solution. BatteryStar operates on battery power, specifically a Milwaukee Tool® brand M18™ battery, making it ideal for temporary applications or areas of a facility or job site where electricity is unavailable or difficult to reach. This combination represented a novel integration of the portable lifting technology available from Columbus McKinnon's Unified and CM brands.

This project also demonstrates Unified Industries' ability to solve customer challenges with innovative, ergonomic, and safe solutions. By understanding Atlas Copco's unique needs and delivering a customized system, Unified and CM have demonstrated the value of collaboration and engineering excellence, supporting Atlas Copco's broader mission of shaping the future of manufacturing.





ADVANTAGES OF WORKING WITH UNIFIED INDUSTRIES

- Experts in delivering custom-engineered, cost-effective solutions for complex material handling challenges
- Tailored systems that meet specific application requirements, reducing internal engineering time and accelerating time to market
- Proven track record of reliable performance and customer satisfaction
- Comprehensive development, design services, and support

CONTACT OUR INDUSTRY EXPERT

Carrying the load since 1953, Unified Industries continues to be a global leader in the overhead material handling market. Combining expertise in material handling systems with motion control technology, our team of engineers will help you design the high-production movement system ideal for your application. From the steel header down to the hook, Unified systems are designed with safety, productivity and ergonomics in mind, featuring unique aluminum rails and industry-leading technology systems installers have come to depend on. .



LIFTING SOLUTIONS

Yale

CM

Duff-Norton

MAGNETEK

UNIFIED

STAHL
CraneSystems

USA

p: 800.888.0985

p: 716.689.5400

sales@unified-ind.com | www.cmco.com/unified