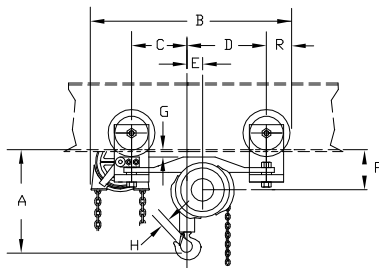
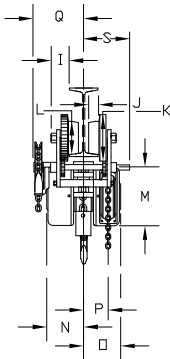


# SPARK RES'T. UNIT

- A 14 1/2"
- B 27 1/4"
- C 7 1/2"
- D 11"
- E 1 3/4"
- F 5 13/16"
- \* G 7/8"
- H 1 13/32"
- I 2 3/16"
- J 1 7/64"
- K 6"
- L 4 1/2"
- M 9 3/4"
- N 5"
- O 5"
- P 3 1/4"
- \* Q 8 9/16"
- R 3"
- \* S 4 7/8"



- \* Applies to geared units only
- \*\* At closest point of contact
- This unit is adjustable from 3 3/8" - 5 1/2" f.w.
- Dimensions shown are accurate for
- "S" & "W" beam shapes

THIS DRAWING SUPPLIED FOR DIMENSIONAL PURPOSES ONLY  
VISUAL DETAILS MAY VARY SLIGHTLY FROM UNIT SUPPLIED  
HOWEVER DIMENSIONS SHOWN APPLY

		1 1/2 TON ARMY TYPE HOIST	DR. RLB	TR.	CK.	AP.
			SCALE NONE		DATE 9/11/07	
			REF. DWG. NO.			
			Dwg. No. CN209			
MK.	REVISIONS	CK-DATE	CHESTER HOIST LISBON, OHIO			