

Drawing number 70012446

Stromlaufplan

Control / Steuerung	SH6	
Hoist Motor / Hubmotor	12/2H71	
Type / Ausführung	A (control with transformer + main contactor)	
Overload Device / Lastwächter	SLE3	
Voltage / Spannung	440-480V, 575-600V / 110/120V 60Hz	
	380-415V / 110/120V 50Hz	
Fuses / Sicherungen	F41-43	10A Class CC
	F101-102	1A Class CC
Fuses / Sicherungen by customer / bauseits	main fuse	35A Class J

Document Dokument	Sheet Blatt
BILL OF MATERIALS GERÄTELISTE	1 (2)
POWER SUPPLY STROMVERSORGUNG	1 (9)
HOIST HUBWERK	2 (9)
TROLLEY FAHRWERK	5 (9)
CONTROL PENDANT STEUERGERÄT	6 (9)
TERMINAL DIAGRAM X16 KLEMMENPLAN X16	7 (9)
LOCATION DIAGRAM A16 AUFBAUPLAN A16	8 (9)
CABEL DIAGRAM KABELPLAN	9 (9)

Date / Datum	Dept. / Abteilung	Designer / Bearbeiter	Page / Seite
08.08.2018	G-Plattform	Schnell	1/1

Drawing number 70012446

Stromlaufplan

BILL OF MATERIALS

Lokcat. Ort	Refer. Referenz	Qty. Anzahl	Spezifikation Typ	Discription Benennung	Fabricate Hersteller	Item Code Sach-Nr.
+A16	-A275	1	SLE3 110/120V	OVERLOAD DEVICE LASTWÄCHTER		579 770 0
+A16	-F41-F43	3	USBCC1	FUSE HOLDER SICHERUNGSTRENNER	FERRAZ	510 078 0
		3	ATDR10 10x38 10A	FUSE LINK SCHMELZEINSATZ	FERRAZ	510 084 0
+A16	-F101-F102	2	USBCC1	FUSE HOLDER SICHERUNGSTRENNER	FERRAZ	510 078 0
		2	ATDR1 10x38 1A	FUSE LINK SCHMELZEINSATZ	FERRAZ	510 466 0
+A16	-G21	1	20/017.100.2 2A	RECTIFIER GLEICHRICHTER	MAYR	04 430 04 88 0
+A16	-K10	1	LC1-D25 G7	CONTACTOR SCHÜTZ	TELEMECANIQUE	582 043 0
+A16	-K23-K24	2	LC1-D25 G7	CONTACTOR SCHÜTZ	TELEMECANIQUE	582 043 0
		2	LAD-N11G	AUXILIARY CONTACT BLOCK HILFSSCHALTERBLOCK	TELEMECANIQUE	582 069 0
+A16	-K25	1	LC1-D258 G7	CONTACTOR SCHÜTZ	TELEMECANIQUE	582 047 0
+A16	-K29	1	LC1-D09 G7	CONTACTOR SCHÜTZ	TELEMECANIQUE	582 041 0
+A16	-K41-K42	1	LC2-K09 G7	CONTACTOR SCHÜTZ	TELEMECANIQUE	579 472 0
+A16	-K45	1	LC1-K09008 G7	CONTACTOR SCHÜTZ	TELEMECANIQUE	579 473 0
+A16	-Q29	1	GV2 RT10	CIRCUIT BREAKER LEISTUNGSSCHALTER	TELEMECANIQUE	579 507 0
		1	GV AN20	AUXILIARY CONTACT BLOCK HILFSSCHALTERBLOCK	TELEMECANIQUE	579 505 0
+A16	-S220	1	GE-S125.04	GEAR-TYPE LIMIT SWITCH GETRIEBEENDSCHALTER	STROMAG	580 005 0
+A16	-S260/-S261	2	E 215-16-11B	PUSH BUTTON DRUCKTASTER	ABB	578 553 0
+A16	-T100*	1	RSTN 100-UL-CSA 440-460-480V / 115V	TRANSFORMER TRANSFORMATOR	RIEDEL	579 568 0
		1	RSTN 100-UL-CSA 550-575-600V / 115V	TRANSFORMER TRANSFORMATOR	RIEDEL	579 569 0
		1	RSTN 100-UL-CSA 380-400-415V / 115V	TRANSFORMER TRANSFORMATOR	RIEDEL	579 583 0
+A16	-X16	1	WPE35	PE-TERMINAL SCHUTZLEITERKLEMME	WEIDMUELLER	519 519 0
		4	WDU35	TERMINAL KLEMME	WEIDMUELLER	519 514 0
		1	WDU16	TERMINAL KLEMME	WEIDMUELLER	519 513 0
		1	WPE16	PE-TERMINAL SCHUTZLEITERKLEMME	WEIDMUELLER	519 518 0
		4	A2C 2.5 PE	PE-TERMINAL SCHUTZLEITERKLEMME	WEIDMUELLER	519 634 0
		20	A2C 2.5	TERMINAL KLEMME	WEIDMUELLER	519 633 0

* to note accomplishment! / Ausführung beachten!

Date / Datum	Dept. / Abteilung	Designer / Bearbeiter	Page / Seite
08.08.2018	G-Plattform	Schnell	1/2

Drawing number **70012446**
 Stromlaufplan

BILL OF MATERIALS

Lokcat. Ort	Refer. Referenz	Qty. Anzahl	Spezifikation Typ	Discription Benennung	Fabricate Hersteller	Item Code Sach-Nr.
+TR	-B275	1		LOAD SENSOR		
+TR	-M21	1		LASTSENSOR		
+TR	-M41	1		HOIST MOTOR		
+TR	-S228	1		HUBMOTOR		
+TR	-S420	1		TROLLEY MOTOR		
				KATZFAHRMOTOR		
				BLOCK OPERATED UPPER LIMT SWITCH		
				ENDSCHALTER (US)		
				TROLLEY LIMIT SWITCH		
				KATZFAHRENSCHALTER		

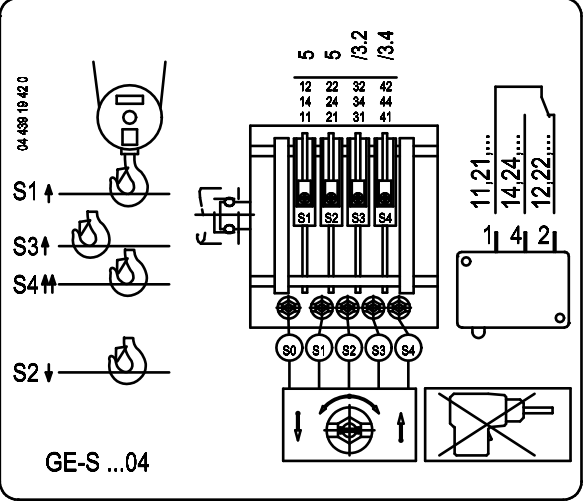
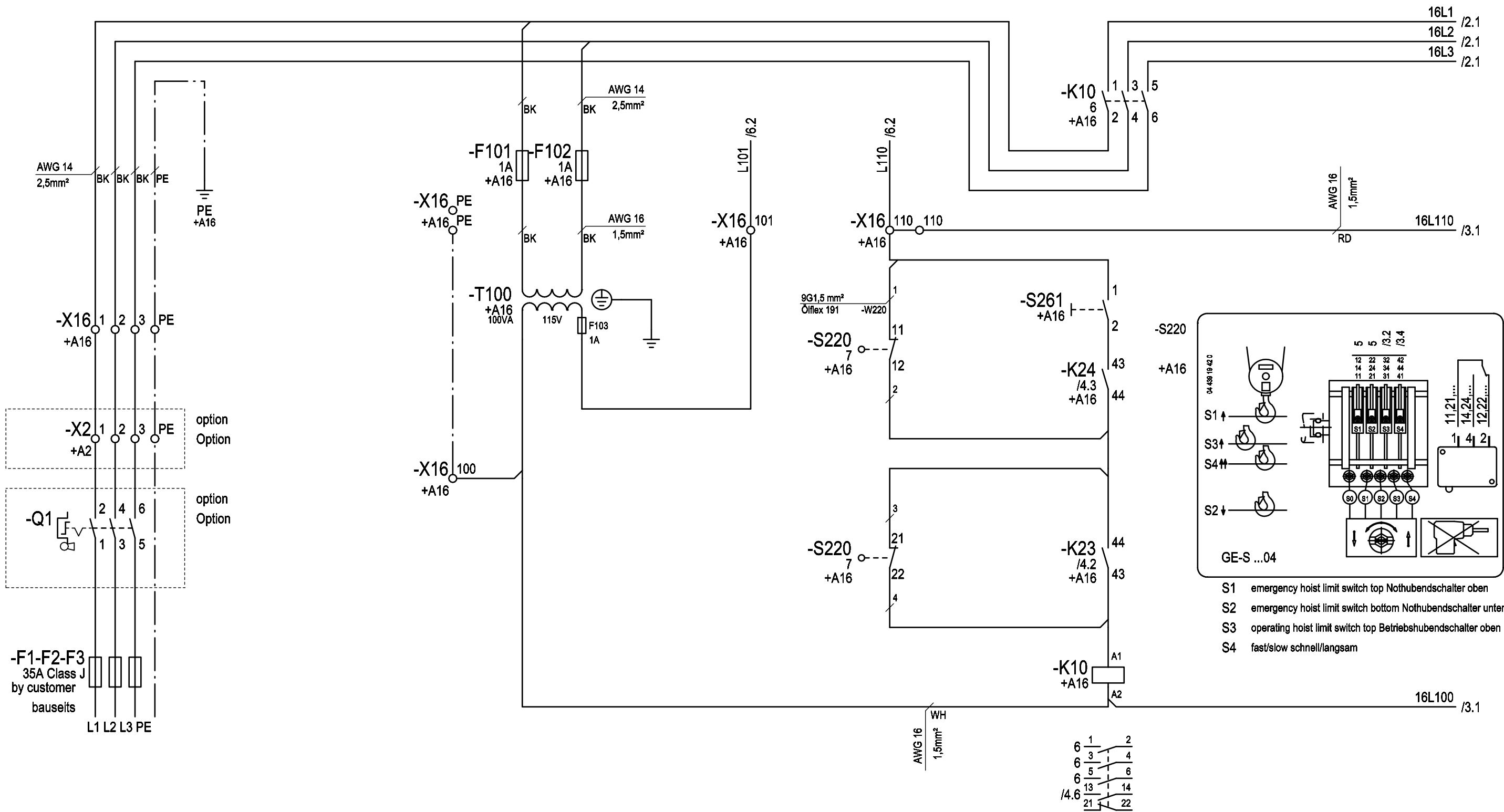
Date / Datum	Dept. / Abteilung	Designer / Bearbeiter	Page / Seite
08.08.2018	G-Platform	Schnell	2/2

power supply
Netzanschluss

control transformer
Steuertransformator

emergency hoist limit switch
Nothubendschalter

crane switch
Kranschalter



- S1 emergency hoist limit switch top Nothubendschalter oben
- S2 emergency hoist limit switch bottom Nothubendschalter unten
- S3 operating hoist limit switch top Betriebshubendschalter oben
- S4 fast/slow schnell/langsam

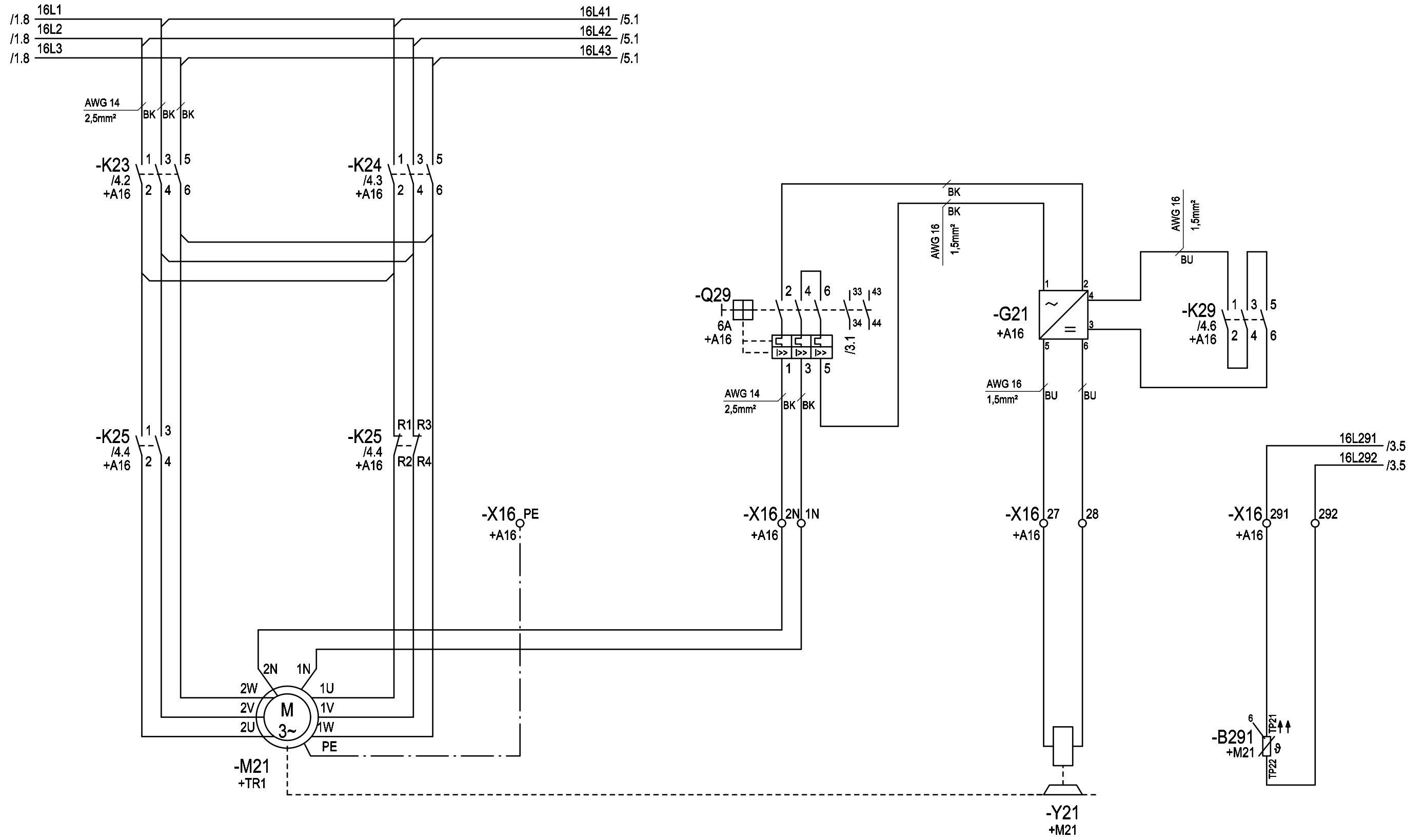
Changes	Date	Name	Date	Name
	08.08.18	Schnell	08.06.18	Huhnd.
			08.06.18	Schnell
			08.06.18	Huhnd.
Rev.		Plot	08.08.2018	Rep. by

Rep. for	Origin
----------	--------

Copyright according to DIN ISO 16016	circuit diagram SH6 H71 type A SLE3 power supply	Order No.	Serial No. XXXXXX
--	--	-----------	-------------------

=	Page: 1
+	of: 9
70012446	

hoist motor
Hubmotor



Rev.	Changes	Date	Name	Date	Name
		08.08.18	Schnell	08.06.18	Huhnd.
				08.06.18	Schnell
				08.06.18	Huhnd.

Plot	08.08.2018	Rep. by		Origin	
------	------------	---------	--	--------	--

Copyright according to DIN ISO 16016	circuit diagram SH6 H71 type A SLE3 hoisting	Order No.	Serial No. xxxxxx
--	--	-----------	-------------------

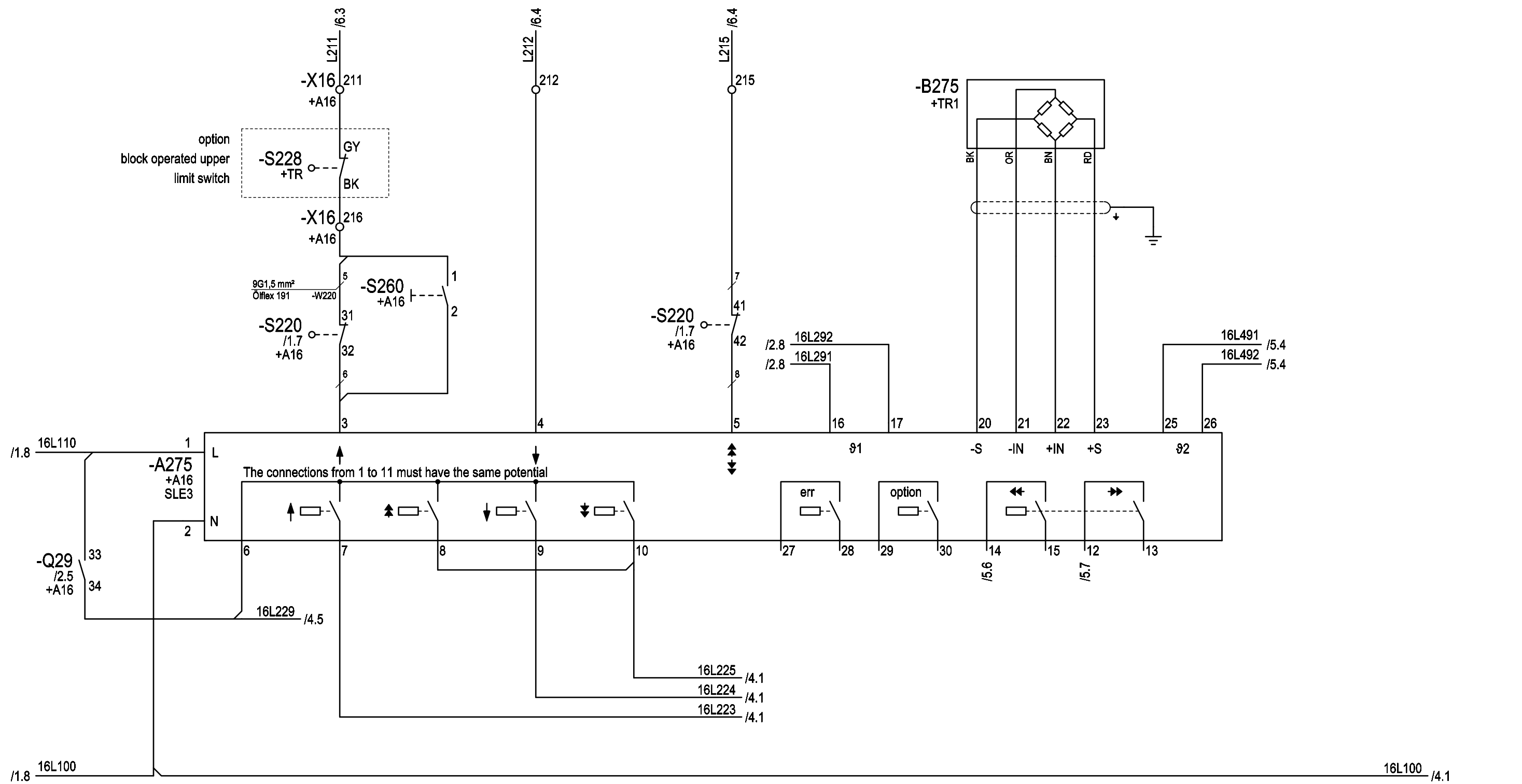
=	
+	
70012446	Page: 2 of: 9

hoisting
heben

lowering
senken

fast
schnell

temperature / load monitoring
Temperatur- / Lastüberwachung



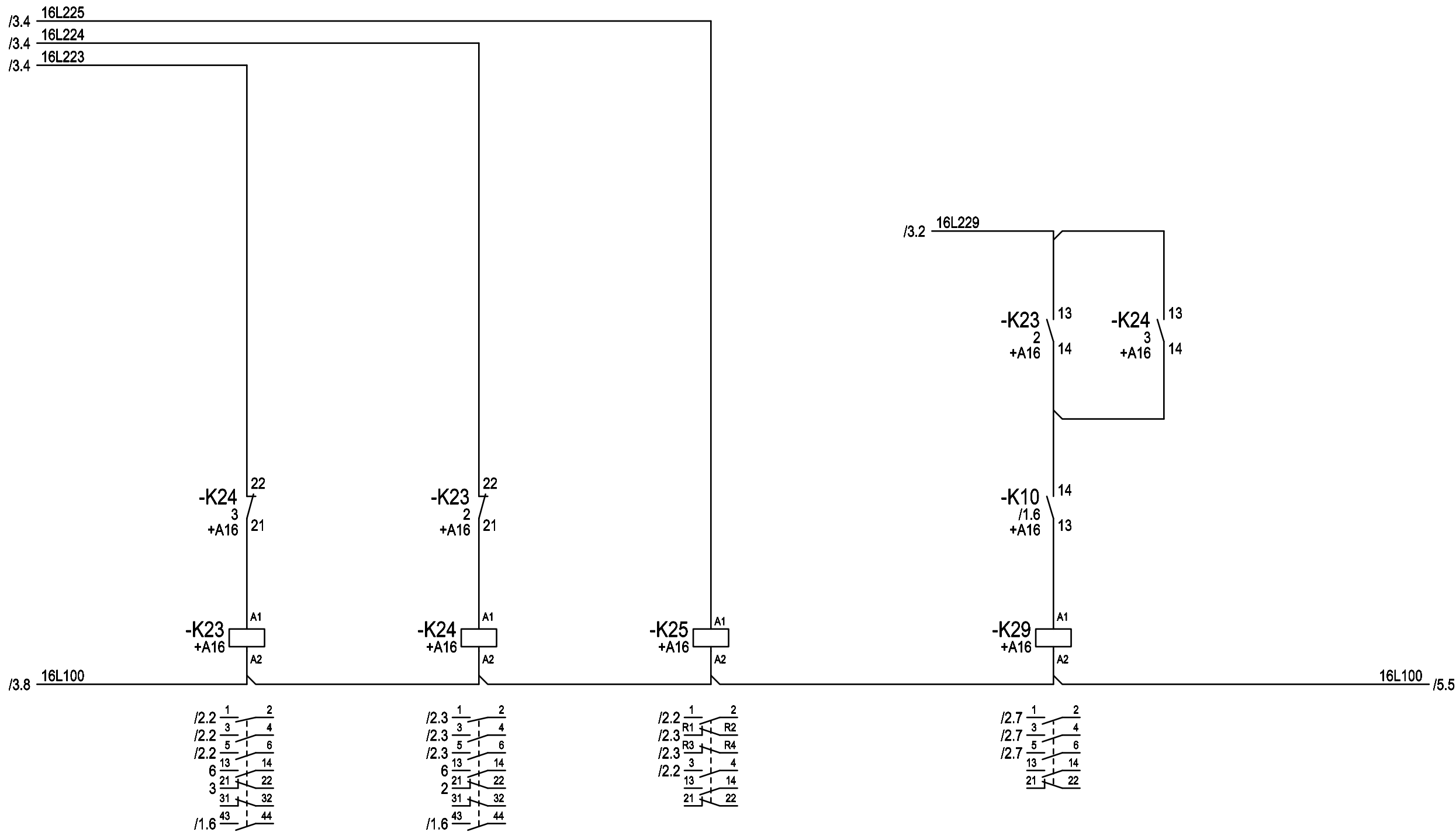
Changes	Date	Name	Date	Name
	08.08.18	Schnell	08.06.18	Huhnd.
			08.06.18	Schnell
			08.06.18	Huhnd.
Rev.		Plot	08.08.2018	Rep. by
				Rep. for
				Origin

Copyright according to DIN ISO 16016	circuit diagram SH6 H71 type A SLE3 hoisting	=
		+
Order No.	Serial No. xxxxxx	70012446
		Page: 3
		of: 9

hoisting
heben

lowering
senken

fast
schnell



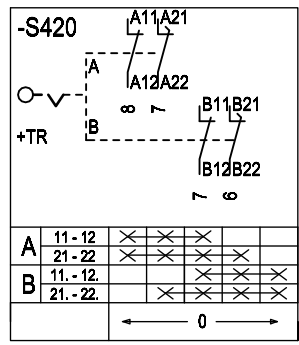
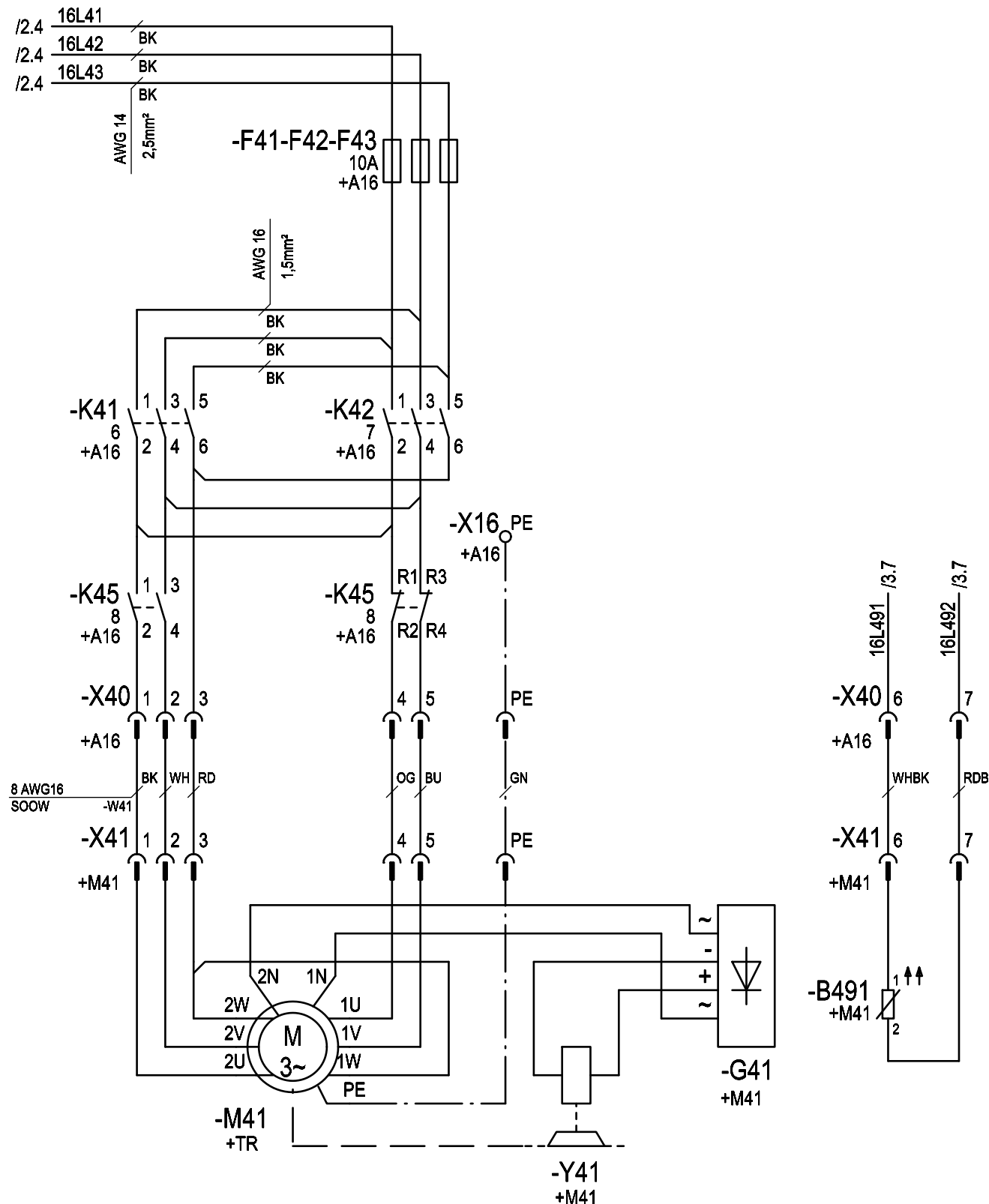
Rev.	Changes	Date	Name	Date	Name
		08.08.18	Schnell	08.06.18	Huhnd.
				08.06.18	Schnell
				08.06.18	Huhnd.
				08.08.2018	

Rep. by	Rep. for	Origin
---------	----------	--------

Copyright according to DIN ISO 16016	circuit diagram SH6 H71 type A SLE3 hoisting
Order No.	Serial No. xxxxxx

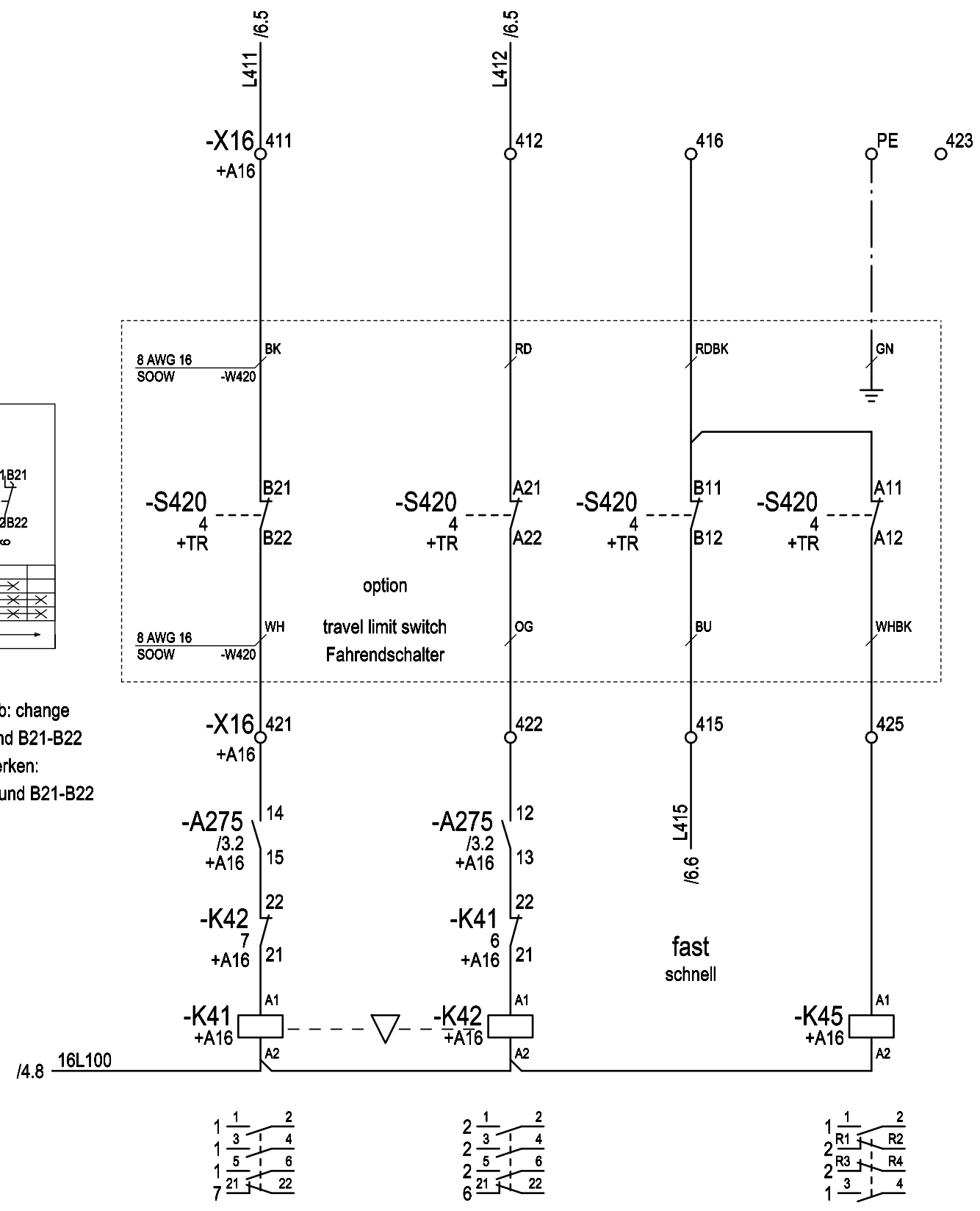
=	
+	
70012446	Page: 4
	of: 9

cross travel motor
Katzfahrmotor



Attention!
with double-rail crab: change contact A21-A22 and B21-B22
Bei Obergurttfahrwerken: Kontakte A21-A22 und B21-B22 tauschen

left links
right rechts



Changes	Date	Name	Date	Name
	08.08.18	Schnell	08.06.18	Huhnd.
			08.06.18	Schnell
			08.06.18	Huhnd.

Rep. by	08.08.2018	Rep. for	Origin
---------	------------	----------	--------

Copyright according to DIN ISO 16016	circuit diagram SH6 H71 type A SLE3 trolley
--------------------------------------	---

=	
+	
70012446	Page: 5 of: 9

option

hoisting gear
Hubwerk

trolley traveling gear
Katzfahrwerk

emergency stop
Not-Halt

hoisting
heben

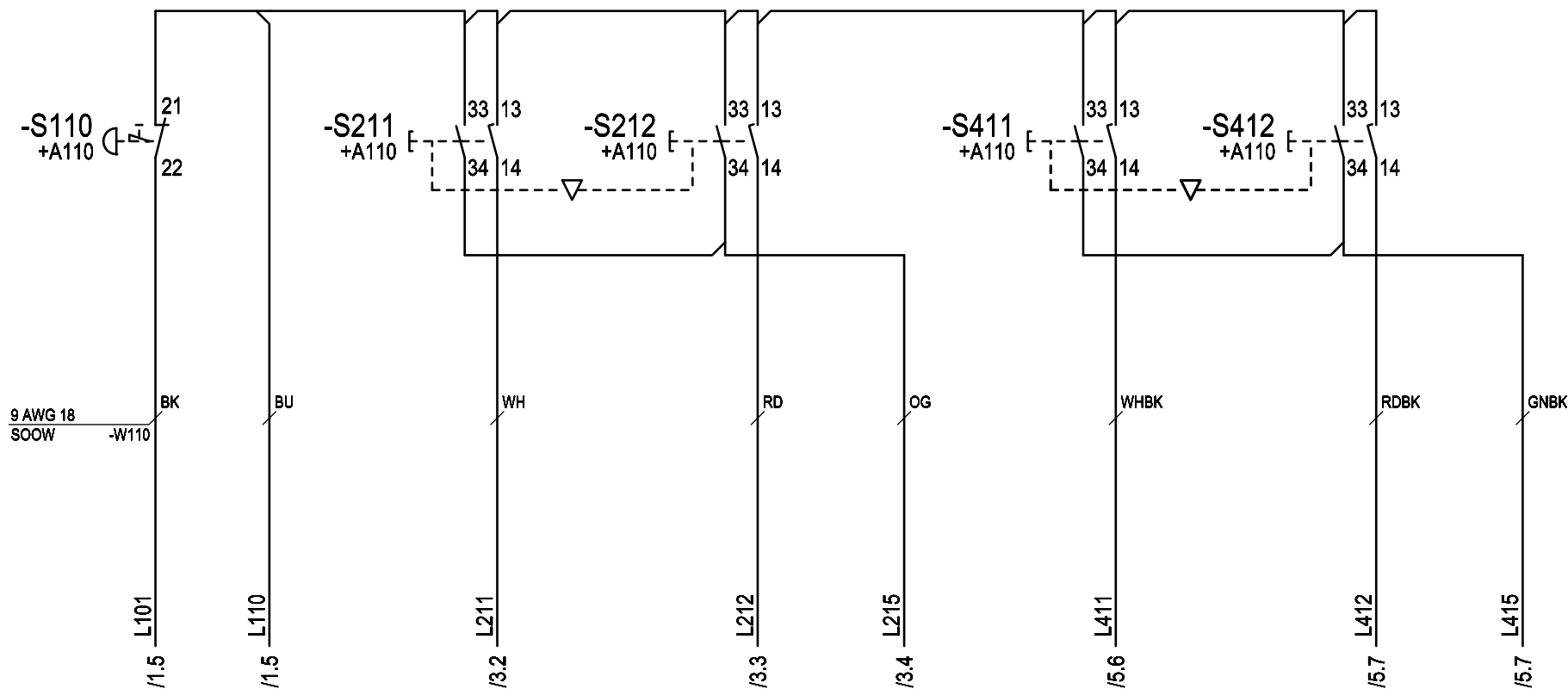
lowering
senken

fast
schnell

left
links

right
rechts

fast
schnell



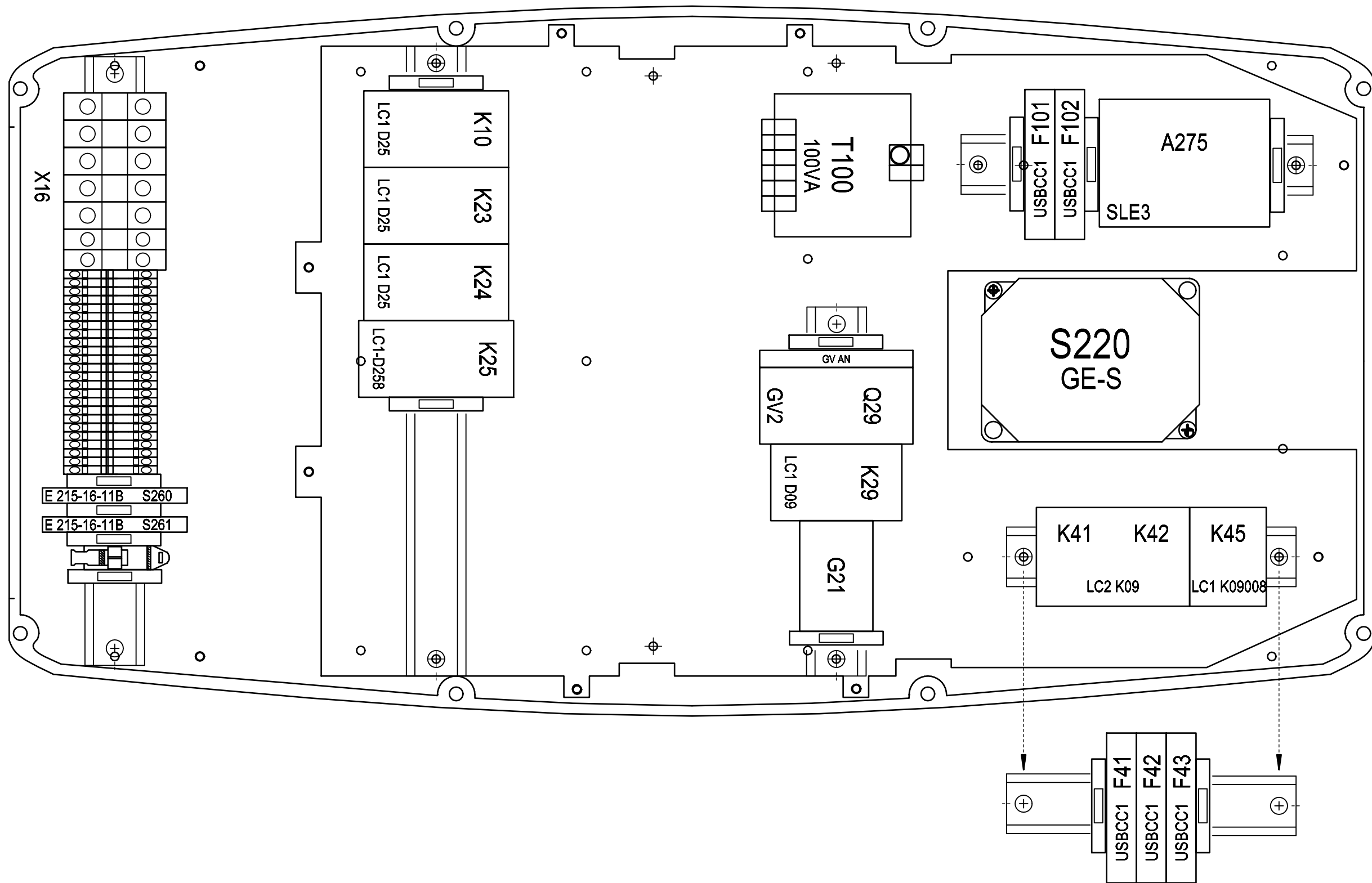
Rev.	Changes	Date	Name	Date	Name
		08.08.18	Schnell	08.06.18	Huhnd.
				08.06.18	Schnell
				08.06.18	Huhnd.
				08.08.2018	

Rep. by	Rep. for	Origin
---------	----------	--------

Copyright according to DIN ISO 16016	circuit diagram SH6 H71 type A SLE3 control pendant
Order No.	Serial No. xxxxxx

=	
+	
70012446	Page: 6 of: 9

GK SH6



Changes	Date	Name		Date	Name
	08.08.18	Schnell	Editor	08.06.18	Huhnd.
			Proved	08.06.18	Schnell
			Release	08.06.18	Huhnd.
Rev.			Plot	08.08.2018	

Rep. by	Rep. for	Origin
---------	----------	--------

Copyright according to DIN ISO 16016

location diagram
SH6 H71 type A SLE3
+A16

Order No. Serial No. xxxxxx

=	
+	
70012446	Page: 8
	of: 9

