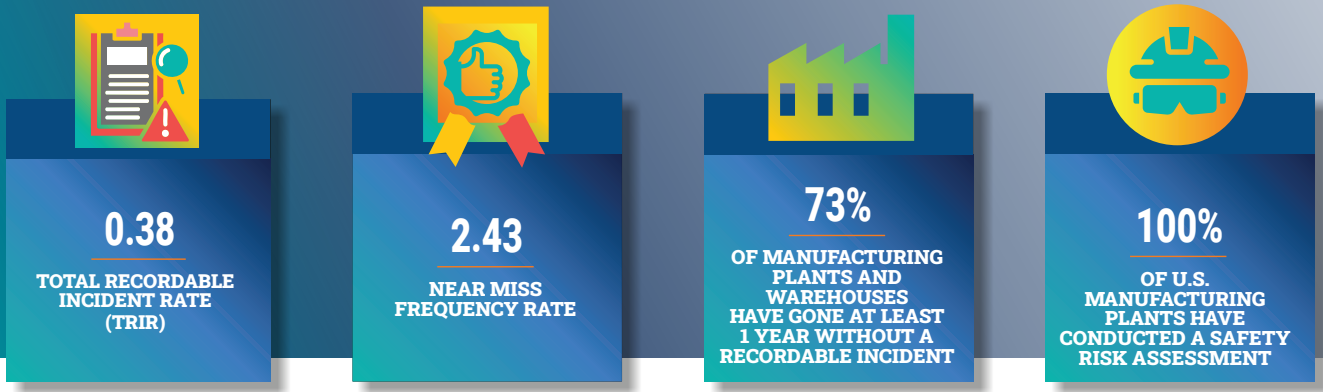


# Corporate Sustainability Fact Sheet FY26

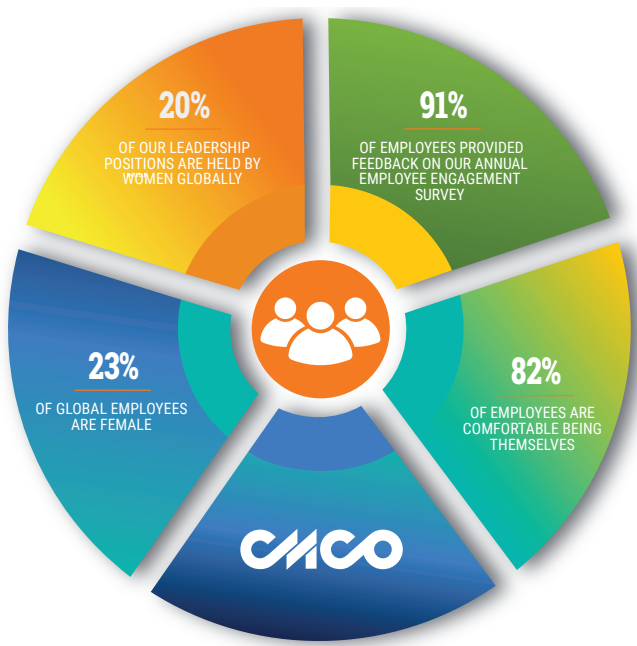


## PEOPLE & SOCIAL IMPACT

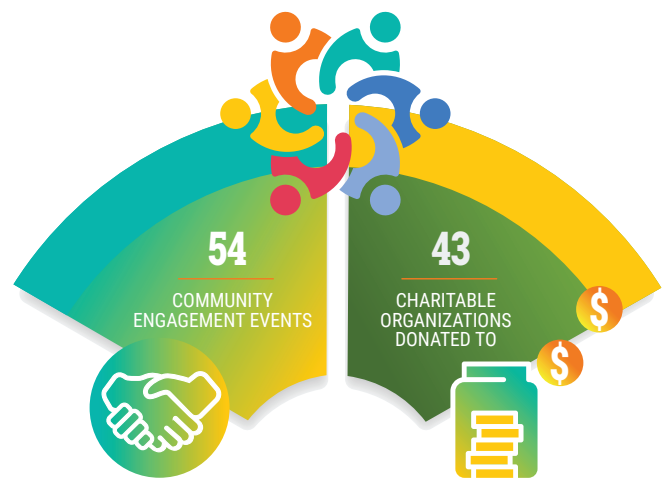
### Occupational Health & Safety



### Our Employees



### Our Communities



*This data excludes the recent acquisition of Kito Crosby.*

# Corporate Sustainability Fact Sheet

## FY26



### PROCESS & GOVERNANCE



0

MATERIAL CYBERSECURITY BREACHES IN THE LAST 5 YEARS



99.5%

OF EMPLOYEES WITH INTERNAL NETWORK ACCESS TRAINED ON OUR BUSINESS CODE OF CONDUCT



3

NEW DIRECTORS APPOINTED ON BOARD OF DIRECTORS



### PLANET & ENVIRONMENTAL STEWARDSHIP

