

Datalogger™

Series 3

DataLogger and DataPulse Software Instruction Manual



Electromotive Systems

©2005 ELECTROMOTIVE SYSTEMS

All rights reserved. This notice applies to all copyrighted materials included with this product, including, but not limited to, this manual and software embodied within the product. This manual is intended for the sole use of the persons to whom it was provided, and any unauthorized distribution of the manual or dispersal of its contents is strictly forbidden. This manual may not be reproduced in whole or in part by any means whatsoever without the expressed written permission of Magnetek's Electromotive Systems.

DANGER, WARNING, CAUTION, and NOTE **Statements**

DANGER, WARNING, CAUTION, and Note statements maybe used in this manual to emphasize important and critical information. You must read these statements to help ensure safety and to prevent product damage.

NOTE: A NOTE statement is used to notify installation, operation, programming, or maintenance information that is important, but not hazard-related.

Section 1: Overview

The DataLogger Series 3 was designed to simplify troubleshooting and provide for detailed operational histories that are necessary for genuine preventive maintenance.

The DataLogger is a nonvolatile solid state (flash memory) recording device that allows the operator to easily and logically access the Run, Alarm & Fault histories of the IMPULSE•G+/VG+ Series 2 and IMPULSE•G+/VG+ Series 3 drives. It will also store 5 parameter sets. The DataLogger was designed to be a fit and form replacement to the Series 3 keypad. An additional cable is required for use with Series 2 drives.

The DataLogger System consists of three (3) components: the DataLogger, the USB cable for PC communication and DataPulse™ Series 3 software.



The DataLogger was designed to include sufficient memory to log the last 1400 Run Events, the last 200 Alarm Events and the last 200 Fault Events. In addition to the Alarm and Fault history, a Trace function is provided for viewing drive data that lead to the Alarm/ Fault condition. The user-friendly DataLogger can be effectively applied by those with little or no knowledge of inverters. All data acquisition is automatic, and data viewing and analysis is available via the LCD display or by uploading and viewing on your PC. The logger is powered by the inverters 5 VDC internal supply when logging or by the USB when connected to the PC. The internal clock is powered by a replaceable Lithium coin type battery.

How data logging works:

The DataLogger is a device which polls the Drive via the RS232 CN1 port. Once connected, the logger will read the Inverter Status and U1 parameters. From the Inverter Status, the logger can detect when the drive is running or when a fault or alarm occurs. Note: the logger must be in Monitor mode to log any data.

When a run occurs:

When the logger detects a run, it increments the run counter and begins to take averages and store peak values of the U1 parameters being read. It also records how long the run remains active. When the run is ended, this information is written to memory for storage. If it ended due to a fault or alarm the reference to that fault/alarm is also associated to the run.

When a fault occurs:

When the logger detects a fault, it reads an additional set of registers from the drive, named the fault content registers. These registers identify which fault(s) are present. Once read, each register is checked to filter out specific faults, such as DC Bus undervoltage, which would be logged every time the drive power is cycled, if not filtered. Once the check is done, if a valid fault still exists, the U2 parameters are read from the drive. Once read, the fault data is written to memory for storage. In addition, the U1 parameters are written to memory as trace data. This gives the past five scans of data just before the fault occurs, in addition to the drive-stored fault data. If a run event was present when the fault occurred, the reference to that run is also saved with the fault data. If the logger is connected and monitoring, the **ENTER** button will reset the fault.

When an alarm occurs:

When the logger detects an alarm, it reads an additional set of registers from the drive, named the alarm content registers. These registers identify which alarm(s) are present. Once read, each register is checked to filter out specific alarms, such as DC Bus undervoltage, which would be logged every time the drive power is cycled, if not filtered. Once the check is done, if any alarms still exist, the current U1 parameters are saved to memory for storage. In addition, the U1 parameters are written to memory as trace data. This gives the past five scans of data leading up to the alarm. If a run event was present when the alarm occurred, the reference to that run is also saved with the alarm data.

Logging of Run, Fault, Alarm and Trace Data

All Data collection is automatic, viewing data is per the various screens, and the roadmap of functions per the diagram on the Menu Navigation on page 6. The Monitor Mode of the DataLogger permits Real Time monitoring of Inverter activity.

Uploading and downloading parameter data

The drive parameters can be uploaded (stored) into the DataLogger for use at a later time. This data, after uploading into the DataLogger, can then be used to easily create duplicate drives during manufacturing or to create a duplicate drive in the case of inverter failure and/or replacement. The parameter data can also be viewed and saved to the PC using the DataPulse Series 3 PC software included with each logger or available as a download at electromotive.com website. A drive parameter set can be downloaded into a drive of same software version, model, control method (flux vector, open loop vector or V/F) and motion. Caution should be taken when downloading parameters into a flux vector drive. An autotune should be performed even if the motors seemingly are identical to ensure peak performance.

GETTING CONNECTED

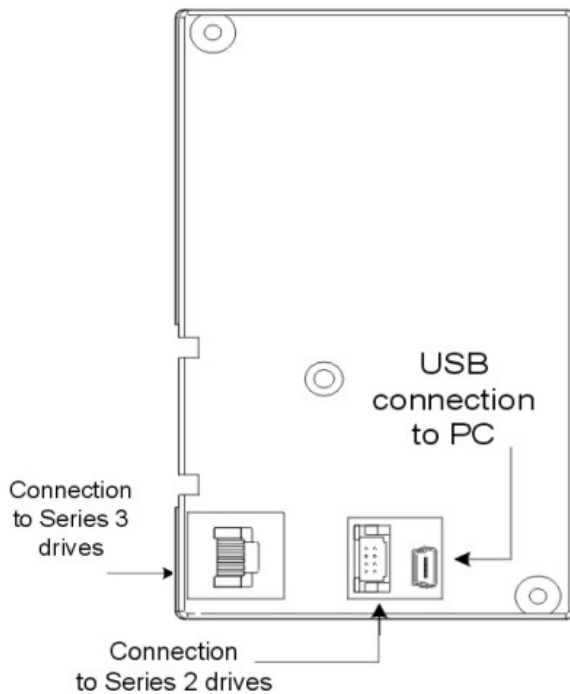
The Datalogger supports all software versions for Series 3 drives and the following software versions for Series 2 drives: 14906, 14908, 14909, 14911,

14912, 14920, 14940, 14960, 14961, 14962, 14964, 14965, and 14980.

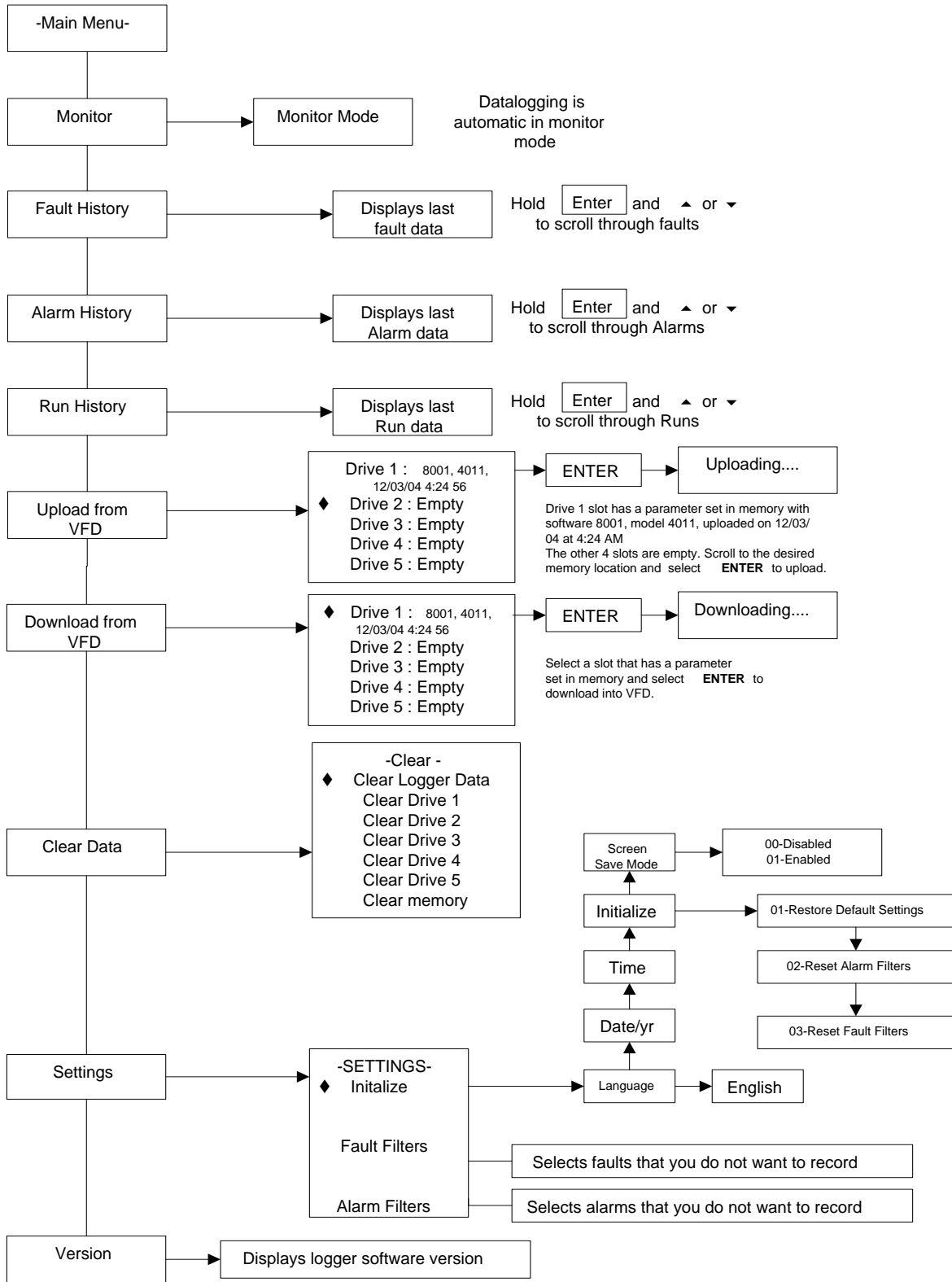
For connection to Series 3 drives, simply replace the keypad with the data logger. The DataLogger will automatically begin logging after a 2 second boot up.

For connection to a Series 2 drive remove the existing keypad. Use the ribbon cable, p/n 140-10274 supplied and connect the 12 pin connector end to the Series 2 keypad port. Connect the 8 pin connector end to port on the rear of the DataLogger.

Note: After a short time without a keyed input the logger displays a screen save mode. When in the screen save mode, press any of the four keys on the logger to display the menu.



DATALOGGER MENU NAVIGATION



The Monitor Mode provides for Real-Time display of Inverter operation. It also indicates the total number of Run events, Alarm and Fault events.

<p>Accum Runs: Indicates the number of run commands given.</p> <p>Accum Faults: Indicates the number of faults recorded.</p> <p>Accum Alarms: Indicates the number of Alarms recorded.</p>	<p style="text-align: center;">- MONITOR MODE - ▲ 01/28/04 08:44:13</p> <p>Run Status: Stopped</p> <p>Accum Runs: 0001</p> <p>Accum Faults: 0001</p> <p>Accum Alarms: 0000 ▼</p>	<p>Date & Time: Used to time stamp all history and trace data.</p> <p>Run Status: Indicates Running Forward, Running Reverse or Stopped.</p>
	<p style="text-align: center;">- MONITOR MODE - ▲ 01/28/04 08:44:13</p> <p>Last Flt: DC Bus UV 01/28/04 08:35</p> <p>Last Alm: UL1 01/29/04 02:37 ▼</p>	<p>Last Flt: Indicates the last fault recorded w/time and date.</p> <p>Last Alm: Indicates the last alarm recorded w/time and date.</p>
	<p style="text-align: center;">- MONITOR MODE - ▲ 01/28/04 08:44:13</p> <p>U1-01: 000.00 Hz</p> <p>U1-02: 000.00 Hz</p> <p>U1-03: 000.00 A</p> <p>U1-04: 0000 ▼</p>	<p>U1-01 = Frequency Reference</p> <p>U1-02 = Output Frequency</p> <p>U1-03 = Output Amps</p> <p>U1-04 = Control Method</p>
	<p style="text-align: center;">- MONITOR MODE - ▲ 01/28/04 08:44:13</p> <p>U1-05: 000.00 Hz</p> <p>U1-06: 000.0 VAC</p> <p>U1-07: 000 VDC</p> <p>U1-08: 000.0 Hp ▼</p>	<p>U1-05 = Motor speed</p> <p>U1-06 = Motor Voltage</p> <p>U1-07 = DC bus voltage</p> <p>U1-08 = Output Hp</p>
	<p style="text-align: center;">- MONITOR MODE - ▲ 01/28/04 08:44:13</p> <p>U1-09: 000.0 %Torque</p> <p>U1-10: 00000000</p> <p>U1-11: 00000000</p> <p>U1-12: 00000000 ▼</p>	<p>U1-09 = % Torque Output</p> <p>U1-10 = Input terminal status</p> <p>U1-11 = Output terminal status</p> <p>U1-12 = Operation status</p>
	<p style="text-align: center;">- MONITOR MODE - ▲ 01/28/04 08:44:13</p> <p>U1-13: 0000 H</p> <p>U1-14: 0000 ▼</p>	<p>U1-13 = Run timer (hours)</p> <p>U1-14 = Software ID</p>

The Fault History provides the data for reviewing recorded faults and information on each fault occurrence.

The diagram illustrates four entries from a fault history log. Each entry is contained in a rectangular box with a title, a timestamp, and a list of parameters. Callouts point to specific fields in the first entry to explain their meaning.

- Entry 1:**
 - Title: -FAULT HISTORY -
 - Timestamp: 01/28/04 08:44:13
 - Parameters: Flt: 1 OF 6, Run: 5, Ext Fault S7
 - Date and time of fault: 01/16/04 02:37
- Entry 2:**
 - Title: - FAULT HISTORY -
 - Timestamp: 01/28/04 08:44:13
 - Parameters: U2-03: 030.00 Hz, U2-04: 017.60 Hz, U2-05: 002.56 A, U2-06: 0000
- Entry 3:**
 - Title: - FAULT HISTORY -
 - Timestamp: 01/28/04 08:44:13
 - Parameters: U2-07: 000.0 VAC, U2-08: 000.0 VDC, U2-09: 000 KW, U2-10: 000 %
- Entry 4:**
 - Title: - FAULT HISTORY -
 - Timestamp: 01/28/04 08:44:13
 - Parameters: U2-11: 00000000, U2-12: 00000000, U2-13: 00000000

Callout Explanations:

- Run where fault occurred:** Points to 'Run: 5' in the first entry.
- Fault Description:** Points to 'Ext Fault S7' in the first entry.
- Date and time of fault:** Points to '01/16/04 02:37' in the first entry.
- Date & Time:** Points to the timestamp '01/28/04 08:44:13' in the first entry.
- Fault number:** Points to 'Flt: 1 OF 6' in the first entry.
- U2-03 = Frequency Reference**
- U2-04 = Output Frequency**
- U2-05 = Output Amps**
- U2-06 = Motor Speed**
- U2-07 = Output Voltage**
- U2-08 = DC Bus Voltage**
- U2-09 = Output Kw**
- U2-10 = Torque Reference**
- U2-11 = Input terminal status**
- U2-12 = Output terminal status**
- U2-13 = Inverter status**

FAULT AND ALARM FILTERS

To turn off the recording of any faults or alarms, go to “Settings”, “Fault Filters” or “Alarm Filters” and press enter. Scroll up or down through the listing of faults/alarms. If you would like to filter out a fault from being recorded then press the enter key when the cursor is next to the desired fault. A check mark on the left hand side will indicate that the fault has been selected to be filtered out. Alarms would be selected in the same manner.

The Alarm History provides the data for reviewing recorded alarms and information on each alarm occurrence.

Alarm History Entry 1:

- Date & Time: 01/28/04 08:44:13
- Alm: 1 OF 26
- Run: 1369
- Alarm Description: Upper Limit1 Err
- Date and time of Alarm: 01/16/04 15:14

Alarm History Entry 2:

- U1-01: 000.00 Hz
- U1-02: 000.00 Hz
- U1-03: 000.00 A
- U1-04: 0000

Alarm History Entry 3:

- U1-05: 000.00 Hz
- U1-06: 000.0 VAC
- U1-07: 000 VDC
- U1-08: 000.0 Hp

Alarm History Entry 4:

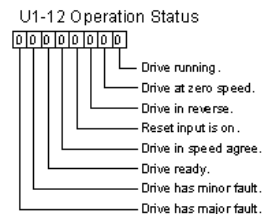
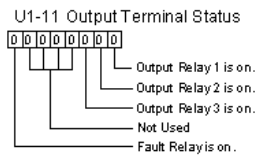
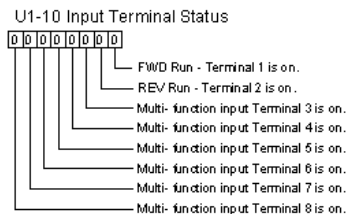
- U1-09: 000.0 %Torque
- U1-10: 00000000
- U1-11: 00000000
- U1-12: 00000000

Alarm History Entry 5:

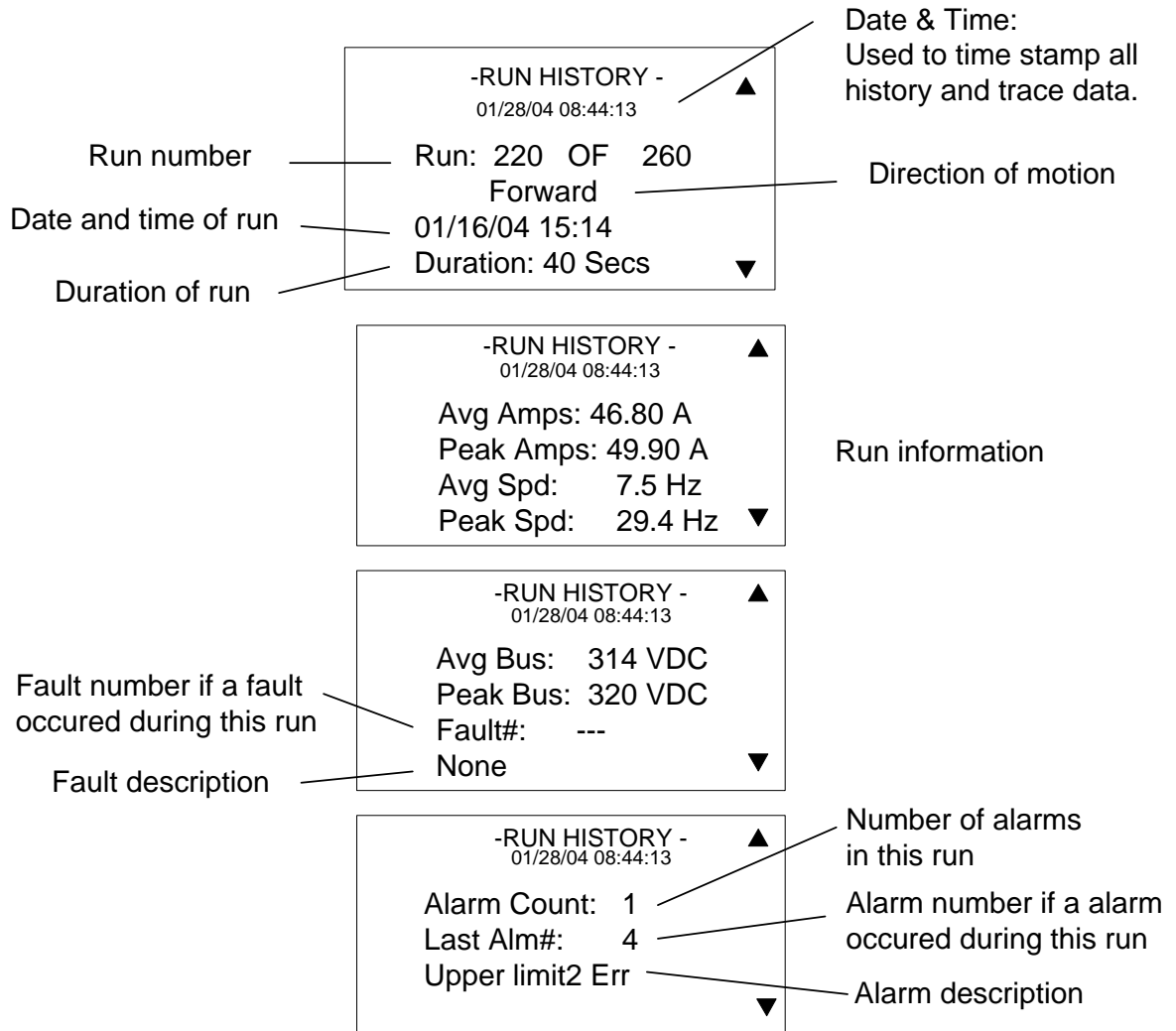
- U1-13: 0000 H

Legend:

- U1-01 = Frequency Reference
- U1-02 = Output Frequency
- U1-03 = Output Amps
- U1-04 = Control Method
- U1-05 = Motor speed
- U1-06 = Motor Voltage
- U1-07 = DC bus voltage
- U1-08 = Output Hp
- U1-09 = % Torque Output
- U1-10 = Input terminal status
- U1-11 = Output terminal status
- U1-12 = Operation status
- U1-13 = Run timer (hours)



The Run History provides the data for reviewing information on each time the drive receives a run command or a change in direction.



Introduction to DataPulse Series 3 software

DataPulse is a user friendly, Windows based, DataLogger communication software that will allow the viewing of logger data in a spreadsheet format.

The DataPulse software functions include:

- Uploading Run, Fault, and Alarm histories and the corresponding trace data.
- Uploading 5 sets of parameters stored in the DataLogger.
- Displaying and saving the above data.

Computer Requirements

The hardware requirements for DataPulse software:

- IBM-compatible PC with a Pentium 233 MHz or higher processor (Pentium 500 MHz or higher processor recommended)
- 64 MB RAM
- 20 MB hard disk storage
- Microsoft Windows 98se, ME, 2000, or XP
Microsoft Internet Explorer 5.5+ or higher
- USB 1.1 or 2.0 compatible port

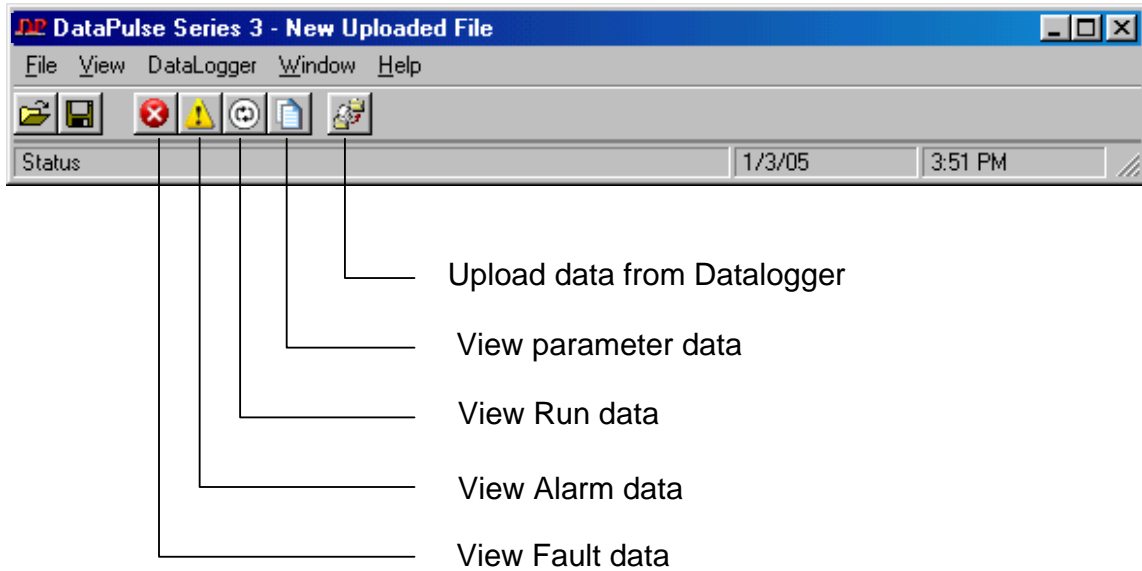
Software Installation


The DataPulse software is designed to auto install after CD insertion, if the installation guide does not display, then in the START menu, choose RUN. . .

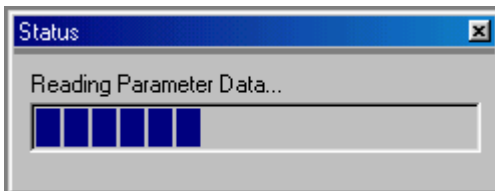
and type "D:\setup.exe" where "D" is your CD drive and click "OK" or select "BROWSE" and select setup.exe and "OK".

After DataPulse software has finished installing, connect your DataLogger to the computers USB port. Your PC will require you to install the driver for this "new hardware". The driver is located on the DataPulse CD.


Navigating DATAPULSE Series 3 MENU

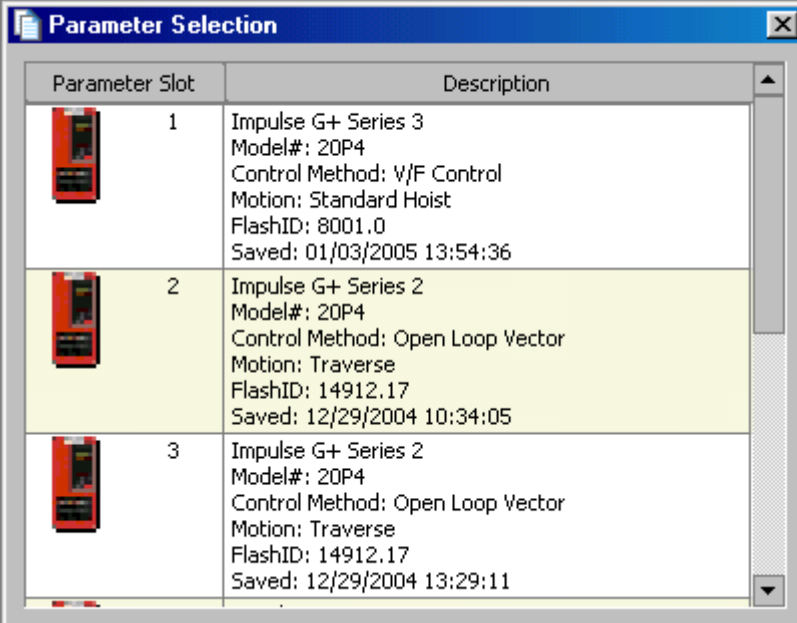


Uploading data stored in the DataLogger is done through the  button located on the toolbar or by selecting "DataLogger" and "Upload from the DataLogger" from the Menu. The file must be uploaded before viewing any data. A status bar will indicate the progress of the upload and the history buttons will be highlighted after the upload is complete.



Viewing parameter sets

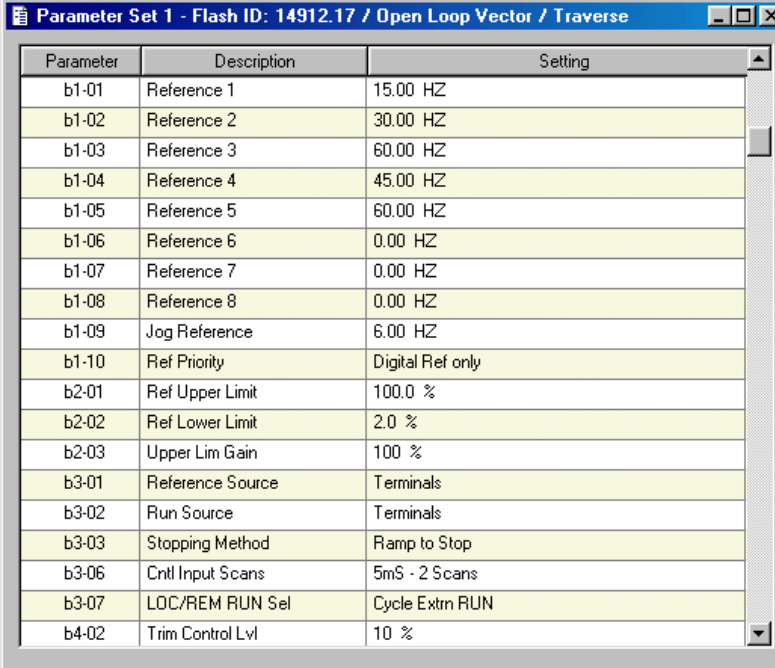
Selecting the  button will display the parameter sets that are stored in the logger.



The image shows a 'Parameter Selection' dialog box with a table of parameter sets. Each row includes a small icon of a device, a slot number, and a detailed description of the parameter set.

Parameter Slot	Description
1	Impulse G+ Series 3 Model#: 20P4 Control Method: V/F Control Motion: Standard Hoist FlashID: 8001.0 Saved: 01/03/2005 13:54:36
2	Impulse G+ Series 2 Model#: 20P4 Control Method: Open Loop Vector Motion: Traverse FlashID: 14912.17 Saved: 12/29/2004 10:34:05
3	Impulse G+ Series 2 Model#: 20P4 Control Method: Open Loop Vector Motion: Traverse FlashID: 14912.17 Saved: 12/29/2004 13:29:11




Double click on the parameter set of interest and the parameter information is displayed.



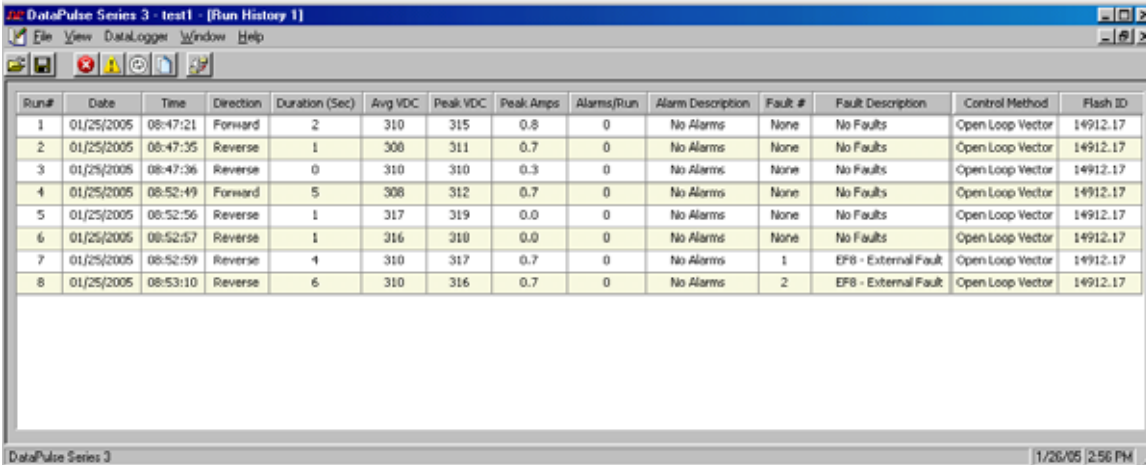
The image shows a 'Parameter Set 1 - Flash ID: 14912.17 / Open Loop Vector / Traverse' dialog box with a table of parameters and their settings.

Parameter	Description	Setting
b1-01	Reference 1	15.00 HZ
b1-02	Reference 2	30.00 HZ
b1-03	Reference 3	60.00 HZ
b1-04	Reference 4	45.00 HZ
b1-05	Reference 5	60.00 HZ
b1-06	Reference 6	0.00 HZ
b1-07	Reference 7	0.00 HZ
b1-08	Reference 8	0.00 HZ
b1-09	Jog Reference	6.00 HZ
b1-10	Ref Priority	Digital Ref only
b2-01	Ref Upper Limit	100.0 %
b2-02	Ref Lower Limit	2.0 %
b2-03	Upper Lim Gain	100 %
b3-01	Reference Source	Terminals
b3-02	Run Source	Terminals
b3-03	Stopping Method	Ramp to Stop
b3-06	Cntl Input Scans	5mS - 2 Scans
b3-07	LOC/REM RUN Sel	Cycle Extn RUN
b4-02	Trim Control Lvl	10 %

Displaying Drive History Data

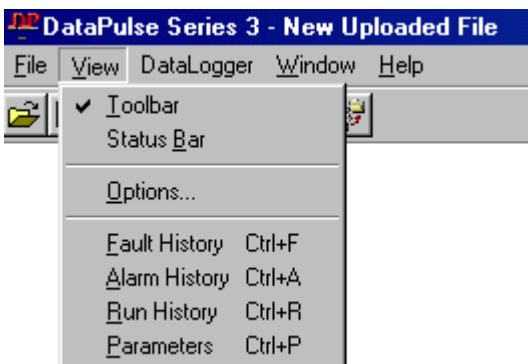
Selecting the  button will display the fault history window. Selecting the  button will display the alarm history and selecting the  button will display the run history window.

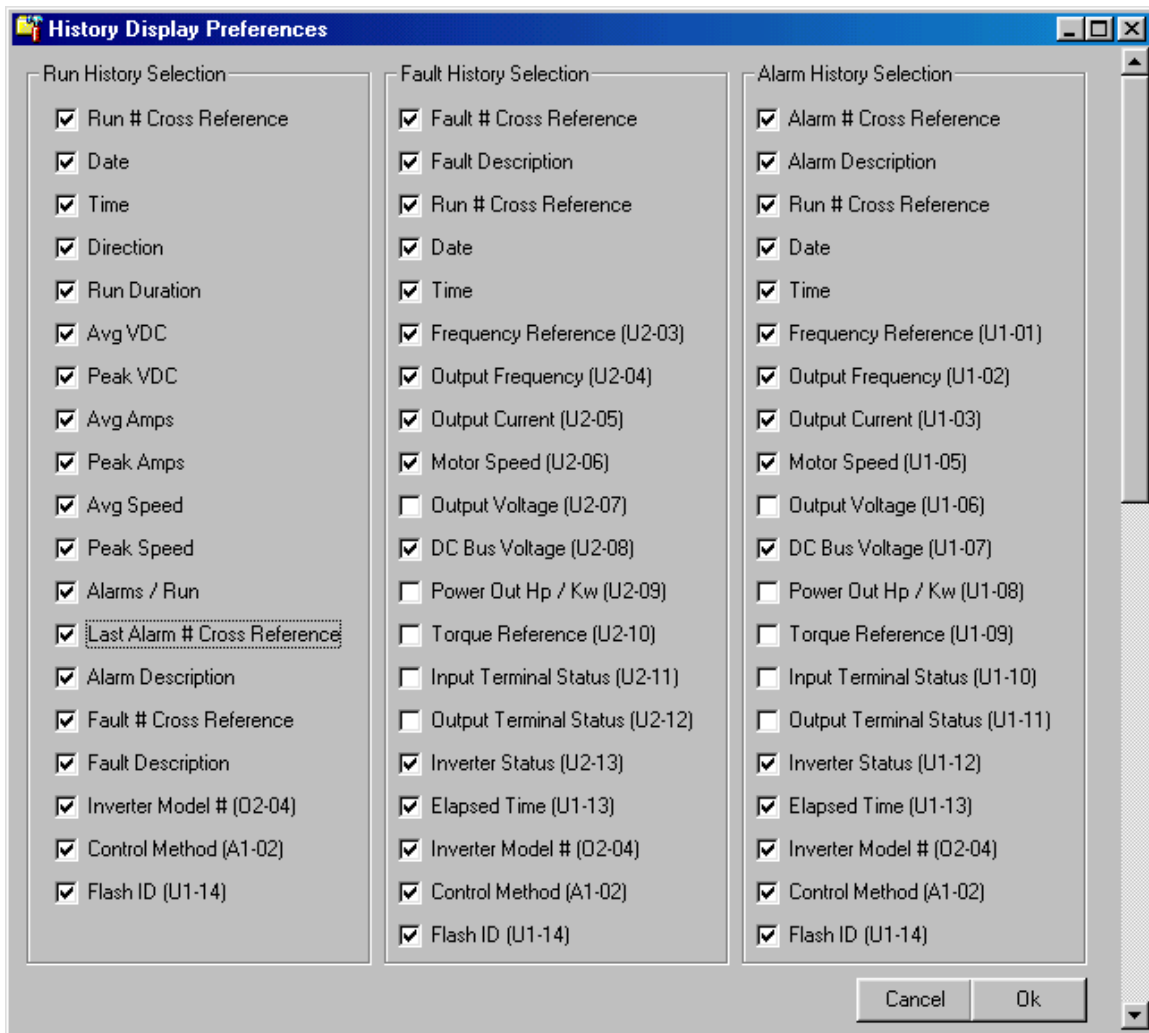
The example below shows a typical display of the history data.



Run#	Date	Time	Direction	Duration (Sec)	Avg VDC	Peak VDC	Peak Amps	Alarms/Run	Alarm Description	Fault #	Fault Description	Control Method	Flash ID
1	01/25/2005	08:47:21	Forward	2	310	315	0.8	0	No Alarms	None	No Faults	Open Loop Vector	14912.17
2	01/25/2005	08:47:35	Reverse	1	308	311	0.7	0	No Alarms	None	No Faults	Open Loop Vector	14912.17
3	01/25/2005	08:47:36	Reverse	0	310	310	0.3	0	No Alarms	None	No Faults	Open Loop Vector	14912.17
4	01/25/2005	08:52:49	Forward	5	308	312	0.7	0	No Alarms	None	No Faults	Open Loop Vector	14912.17
5	01/25/2005	08:52:56	Reverse	1	317	319	0.0	0	No Alarms	None	No Faults	Open Loop Vector	14912.17
6	01/25/2005	08:52:57	Reverse	1	316	318	0.0	0	No Alarms	None	No Faults	Open Loop Vector	14912.17
7	01/25/2005	08:52:59	Reverse	4	310	317	0.7	0	No Alarms	1	EF8 - External Fault	Open Loop Vector	14912.17
8	01/25/2005	08:53:10	Reverse	6	310	316	0.7	0	No Alarms	2	EF8 - External Fault	Open Loop Vector	14912.17

Data columns can be moved by selecting the column header and dragging the column to a new location. Columns can be deleted by selecting “VIEW” and “OPTIONS” from the toolbar menu.



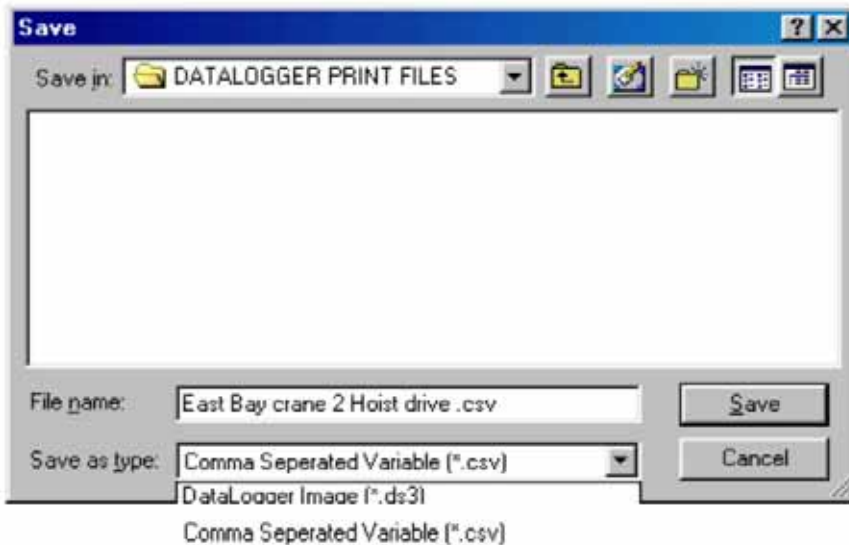


Select the data that you want to display by selecting in the check box.

PRINTING

It is best to print only the desired information from the thousands of pieces of data stored in the logger. To edit and print this information, you would save the file as a *.CSV file which is a “comma separated variable” file. The file type can be easily imported into a spreadsheet program for editing and printing.

To save this file as a .CSV file, select “Save as”, “Save as type” and select “Comma Separated Variable(*.csv)” in the drop down menu. (Be sure to rename your file.)



Open the *.CSV file in a spreadsheet program such as Microsoft Excel and print the desired data.