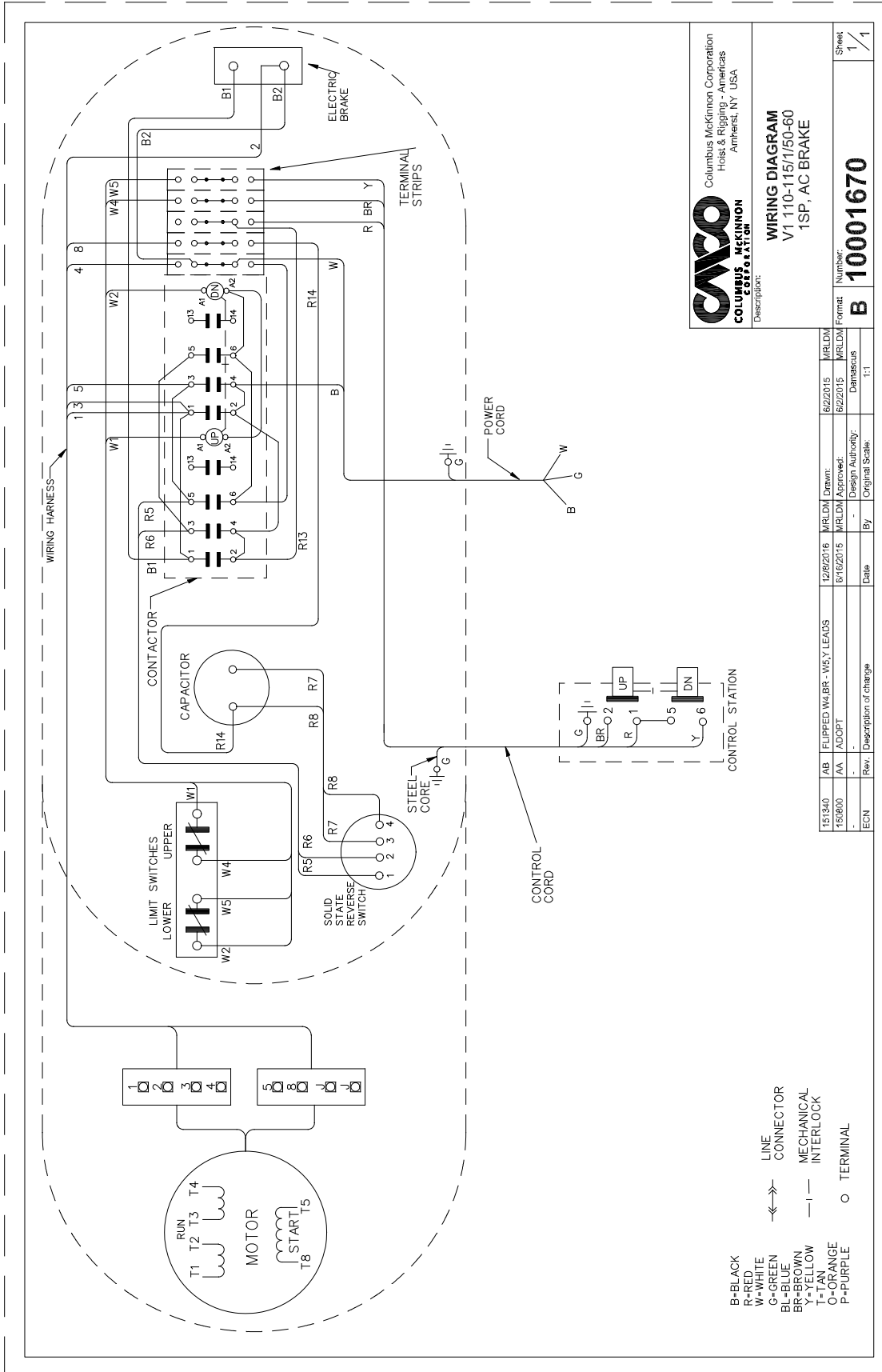


# MODELS B, C, & F; SINGLE-PHASE; STANDARD AC BRAKE

Wiring Diagrams shown are representative. Consult diagram in hoist or furnished with unit.



**CARRO**  
**COLUMBUS MCKINNON CORPORATION**  
 Columbus McKinnon Corporation  
 Hoist & Rigging - Americas  
 Amherst, NY USA

**WIRING DIAGRAM**  
 V1 110-115/150-60  
 1SP, AC BRAKE

Number: **B 10001670**

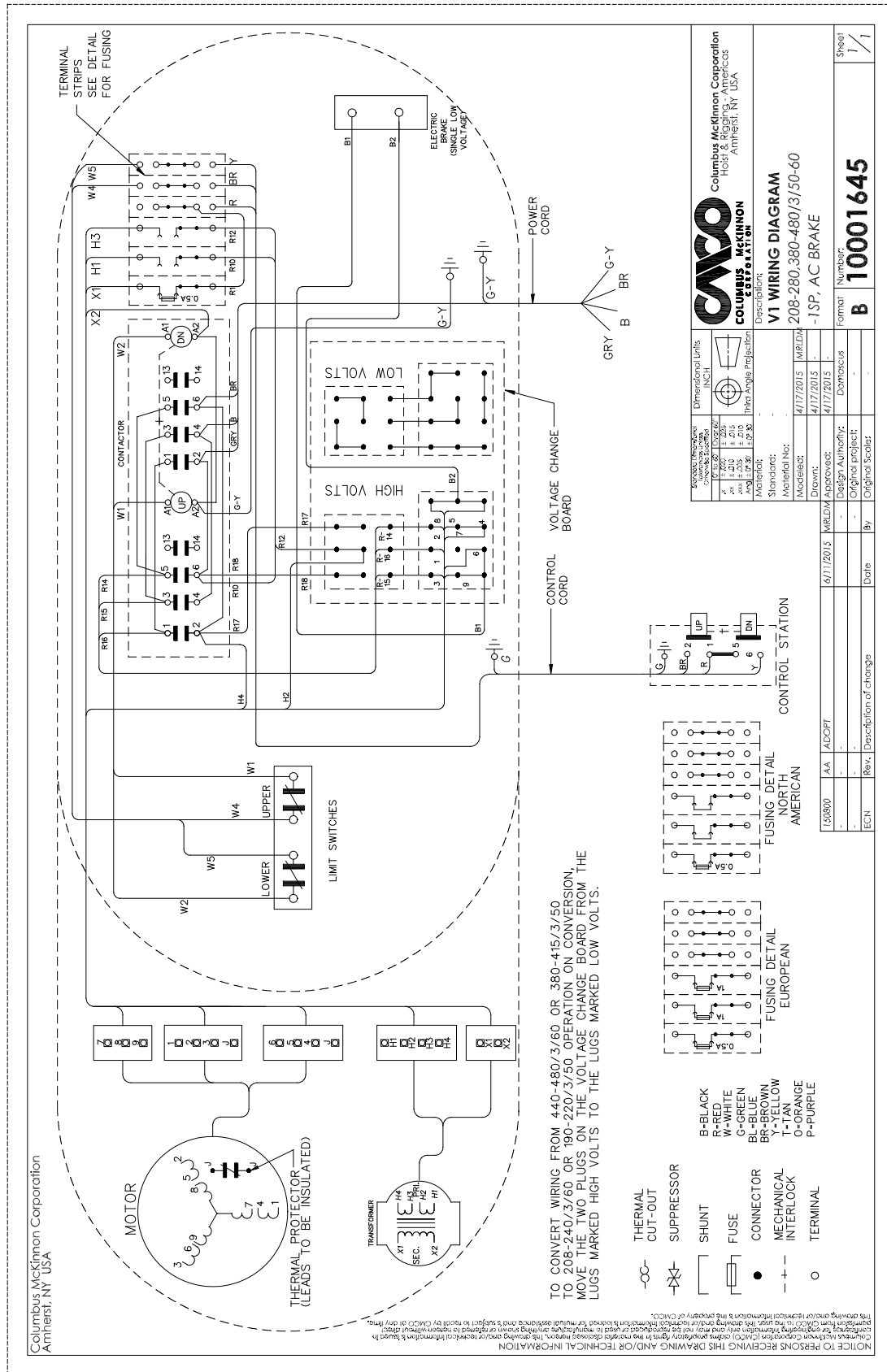
Format: B  
 Database: 111

Sheet: 1/1

ECN	Rev.	Description of change	Date	By	Design Authority	MRLDM Drawn	MRLDM Approved	MRLDM Database
151840	AB	FLIPPED W4, BR - W5, Y LEADS	12/2/2016			6/2/2015	6/2/2015	
150800	AA	ADOPT	5/16/2015					

# MODELS B, C, & F; THREE-PHASE; STANDARD AC BRAKE

Wiring Diagrams shown are representative. Consult diagram in hoist or furnished with unit.



<b>CMC</b> Columbus McKinnon Corporation Hoist & Rigging - Americas Amherst, NY, USA Description: <b>V1 WIRING DIAGRAM</b> 208-280, 380-480/3/50-60 -1SP, AC BRAKE	Dimensional Units: INCH Projection: Third Angle Projection Scale: 1:1 Date: 4/17/2015 Drawn: MRLDM Design Authority: Dombscus Original Project: B Original Scale: 1/1
--	--

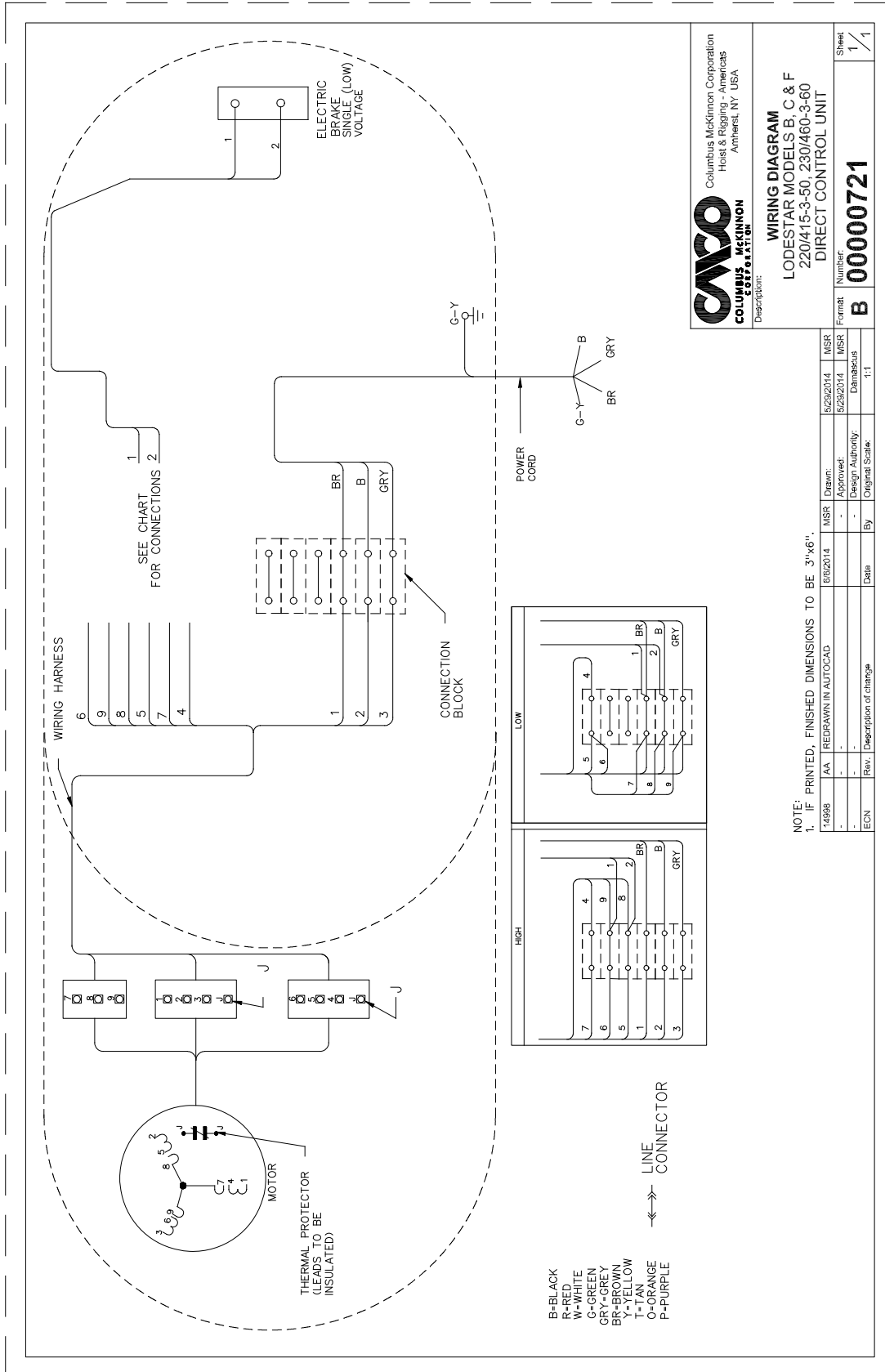
ECN: AA Description of change: ADOPT	Date: 6/11/2015 By: MRLDM Approved: MRLDM
---	---

ECN: AA Description of change: ADOPT	Date: 6/11/2015 By: MRLDM Approved: MRLDM
---	---

ECN: AA Description of change: ADOPT	Date: 6/11/2015 By: MRLDM Approved: MRLDM
---	---

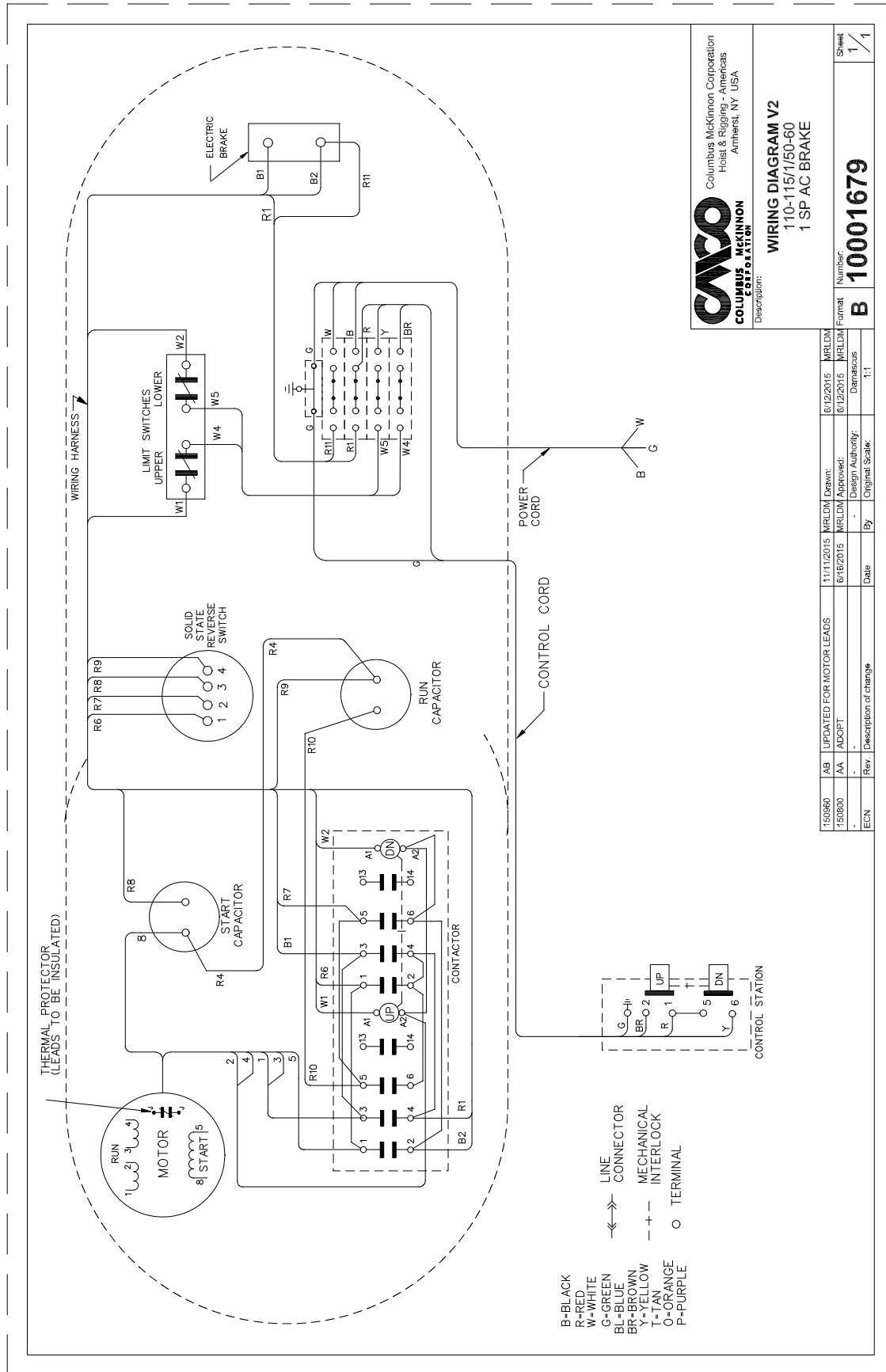
# MODELS B, C, & F; DIRECT CONTROL; STANDARD AC BRAKE

Wiring Diagrams shown are representative. Consult diagram in hoist or furnished with unit.



# MODELS J, L, & R ; SINGLE-PHASE; STANDARD AC BRAKE

Wiring Diagrams shown are representative. Consult diagram in hoist or furnished with unit.



**COLUMBUS MCKINNON CORPORATION**  
 Columbus McKinnon Corporation  
 Hoist & Rigging - Americas  
 Amherst, NY USA

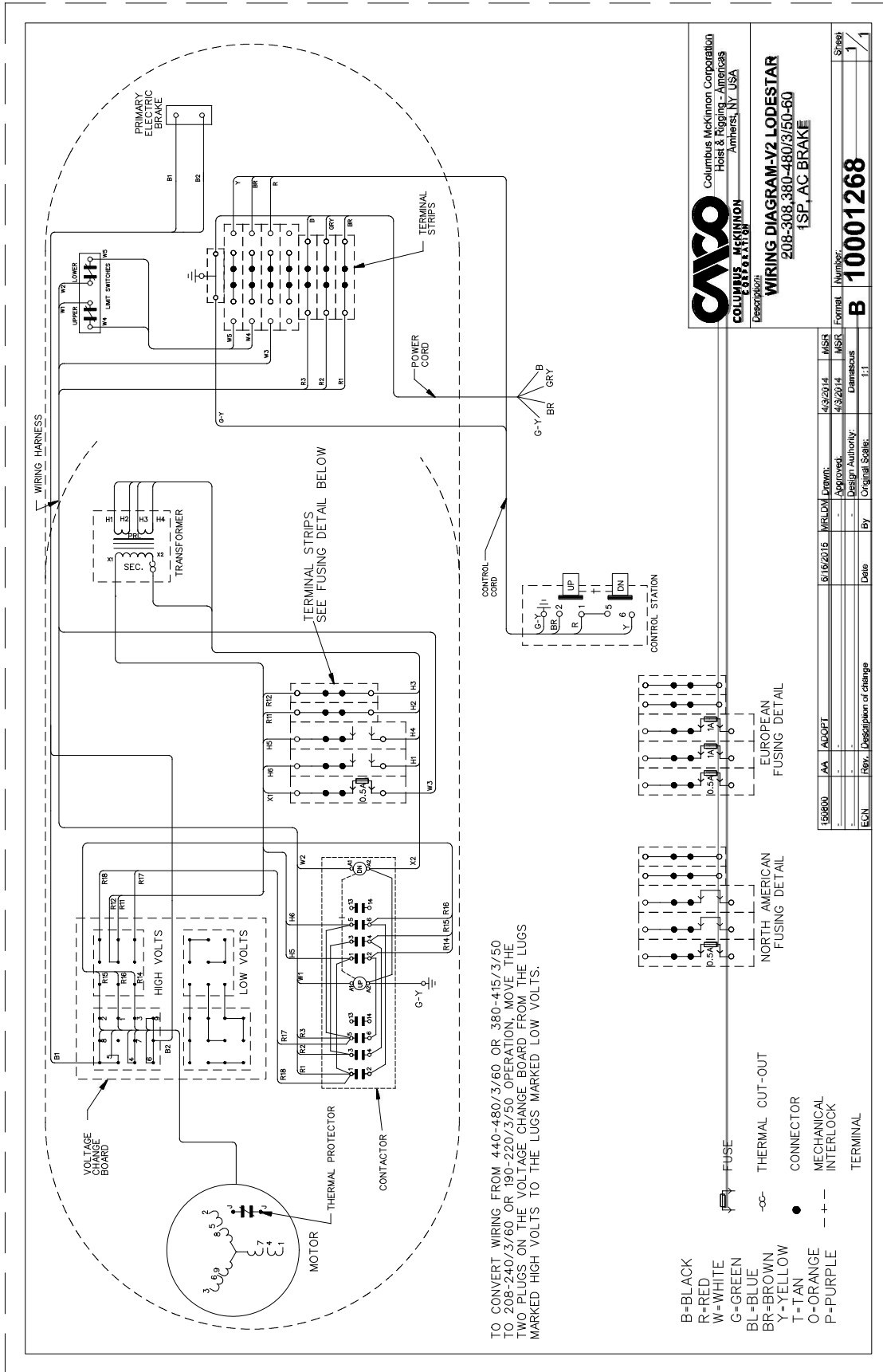
**WIRING DIAGRAM V2**  
 110-115/150-60  
 1 SP AC BRAKE

Number: **B 10001679**

Sheet: **1/1**

# MODELS J, JJ, L, LL, R, & RR; THREE-PHASE; STANDARD AC BRAKE

Wiring Diagrams shown are representative. Consult diagram in hoist or furnished with unit.



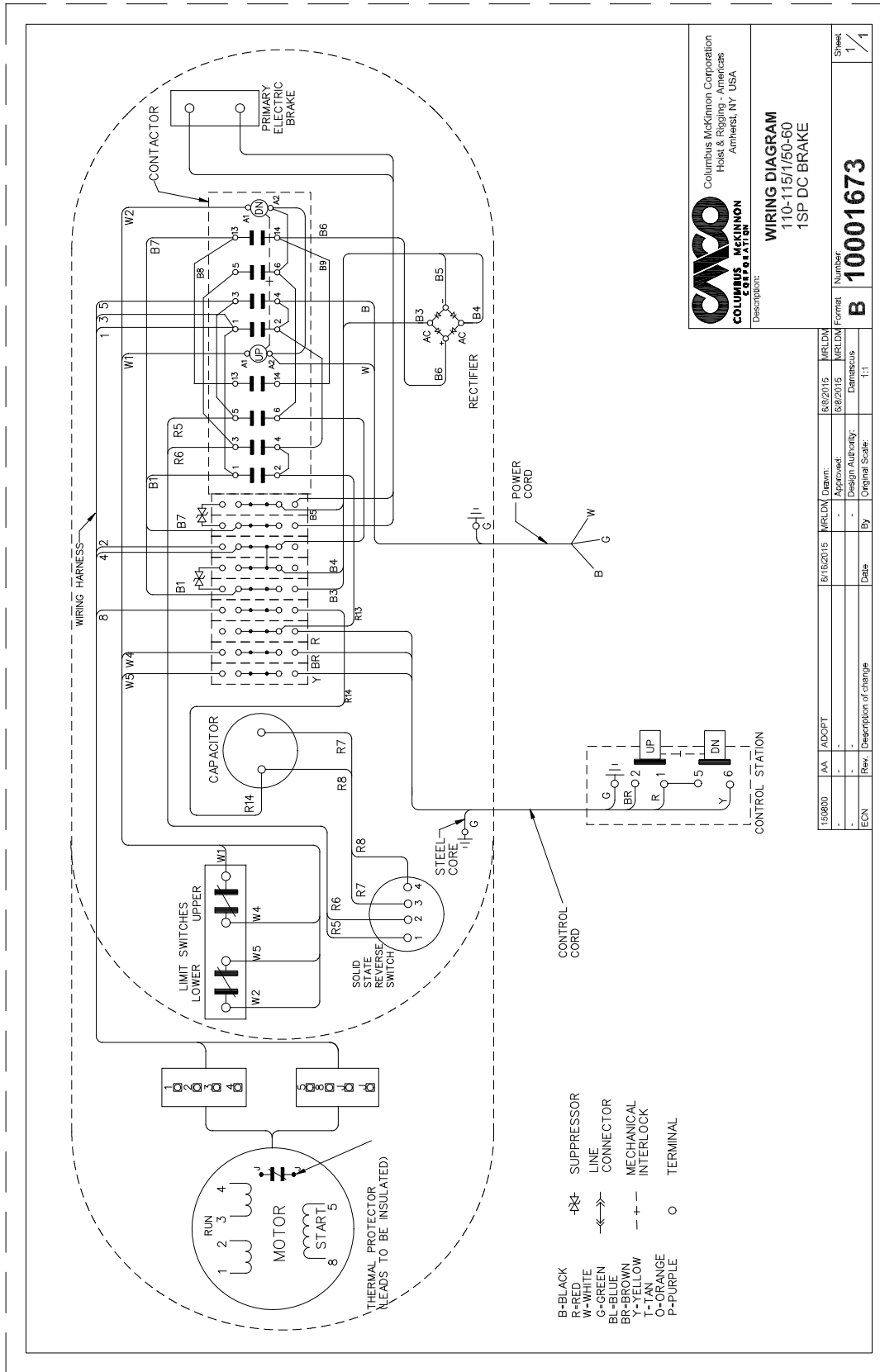
**CISCO**  
 Columbus McKinnon Corporation  
 Hoist & Rigging - Americas  
 Amherst, NY USA

**WIRING DIAGRAM-Y2 LODESTAR**  
 208-308,380-480/3/60-80  
 1SP, AC BRAKE



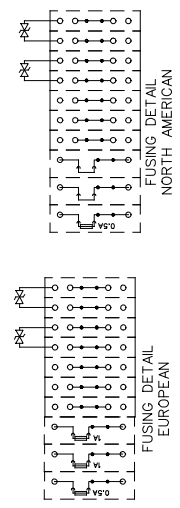
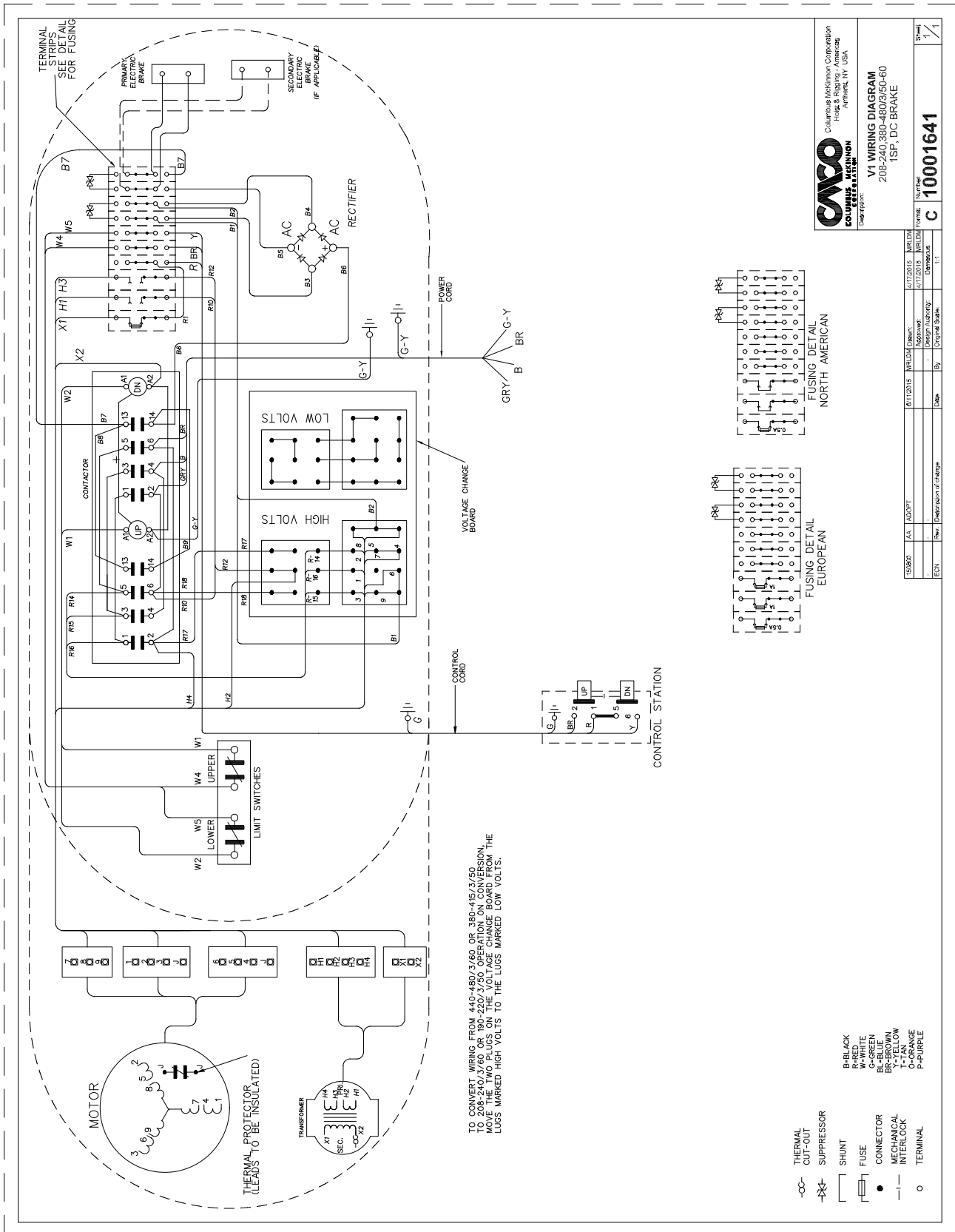
# MODELS B, C, & F; SINGLE-PHASE; OPTIONAL DC BRAKE

Wiring Diagrams shown are representative. Consult diagram in hoist or furnished with unit.



# MODELS B, C, & F; THREE-PHASE; OPTIONAL DC BRAKE

Wiring Diagrams shown are representative. Consult diagram in hoist or furnished with unit.



**V1 WIRING DIAGRAM**  
208-240/380-480/3/50-60  
TSP, DC BRAKE

Number	1
Form	C
Revision	1

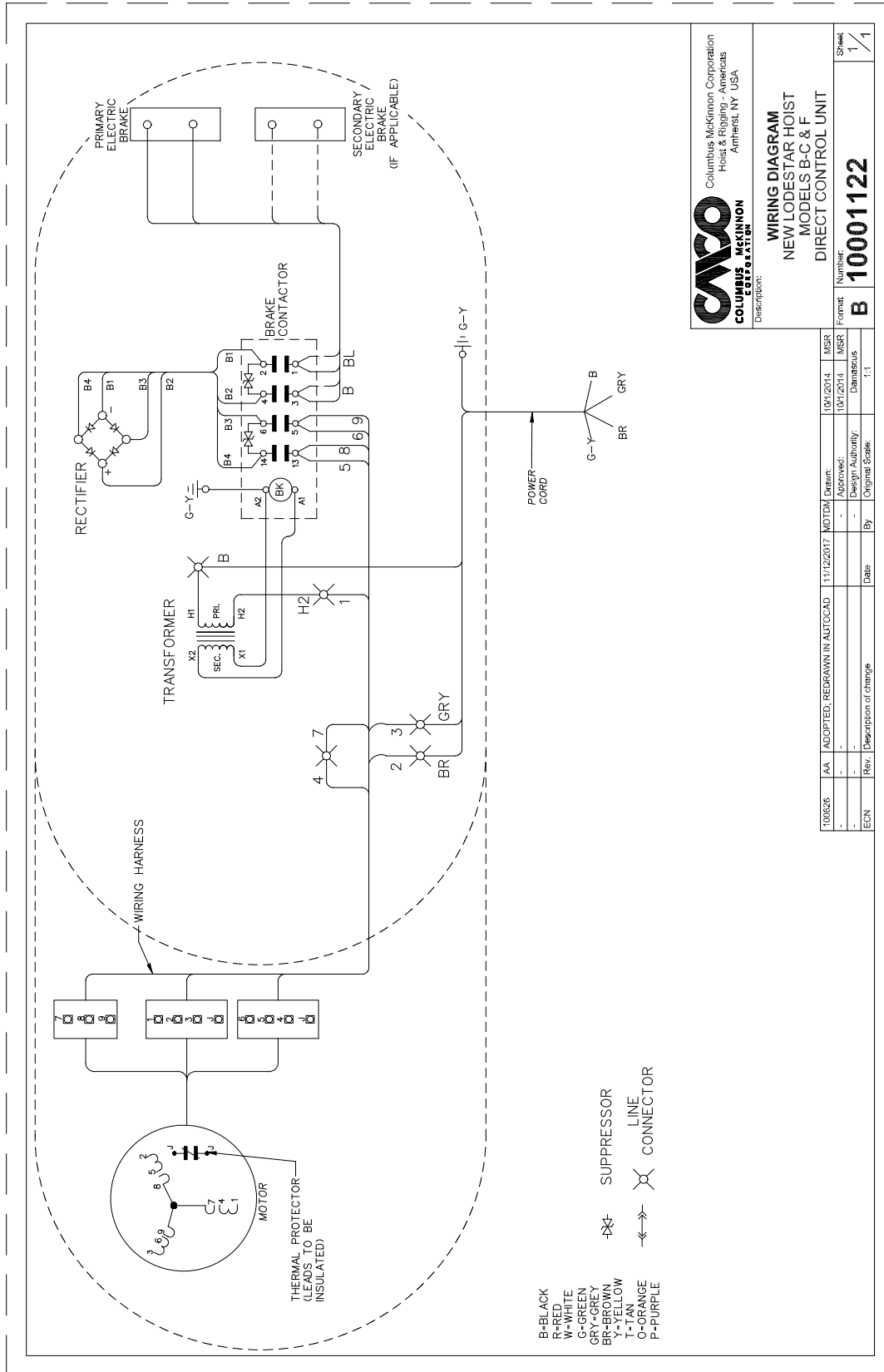
Rev	Description of Change	Date	By	Checked	Appr	Drawn	DATE
1	Original						11/17/2015
2							4/17/2015

- THERMAL CUT-OUT
  - X— SUPPRESSOR
  - |— SHUNT
  - |— FUSE
  - |— CONNECTOR
  - MECHANICAL INTERLOCK
  - TERMINAL
- B-BLACK
  - R-RED
  - W-WHITE
  - G-GREEN
  - BR-BROWN
  - Y-YELLOW
  - O-ORANGE
  - P-PURPLE



# MODELS B, C, & F; DIRECT CONTROL; OPTIONAL DC BRAKE (VOLTAGE SPECIFIC)

Wiring Diagrams shown are representative. Consult diagram in hoist or furnished with unit.



**CMSO**  
COLUMBUS MCKINNON CORPORATION  
Hoist & Rigging - Americas  
Amherst, NY USA

**WIRING DIAGRAM**  
NEW LODESTAR HOIST  
MODELS B-C & F  
DIRECT CONTROL UNIT

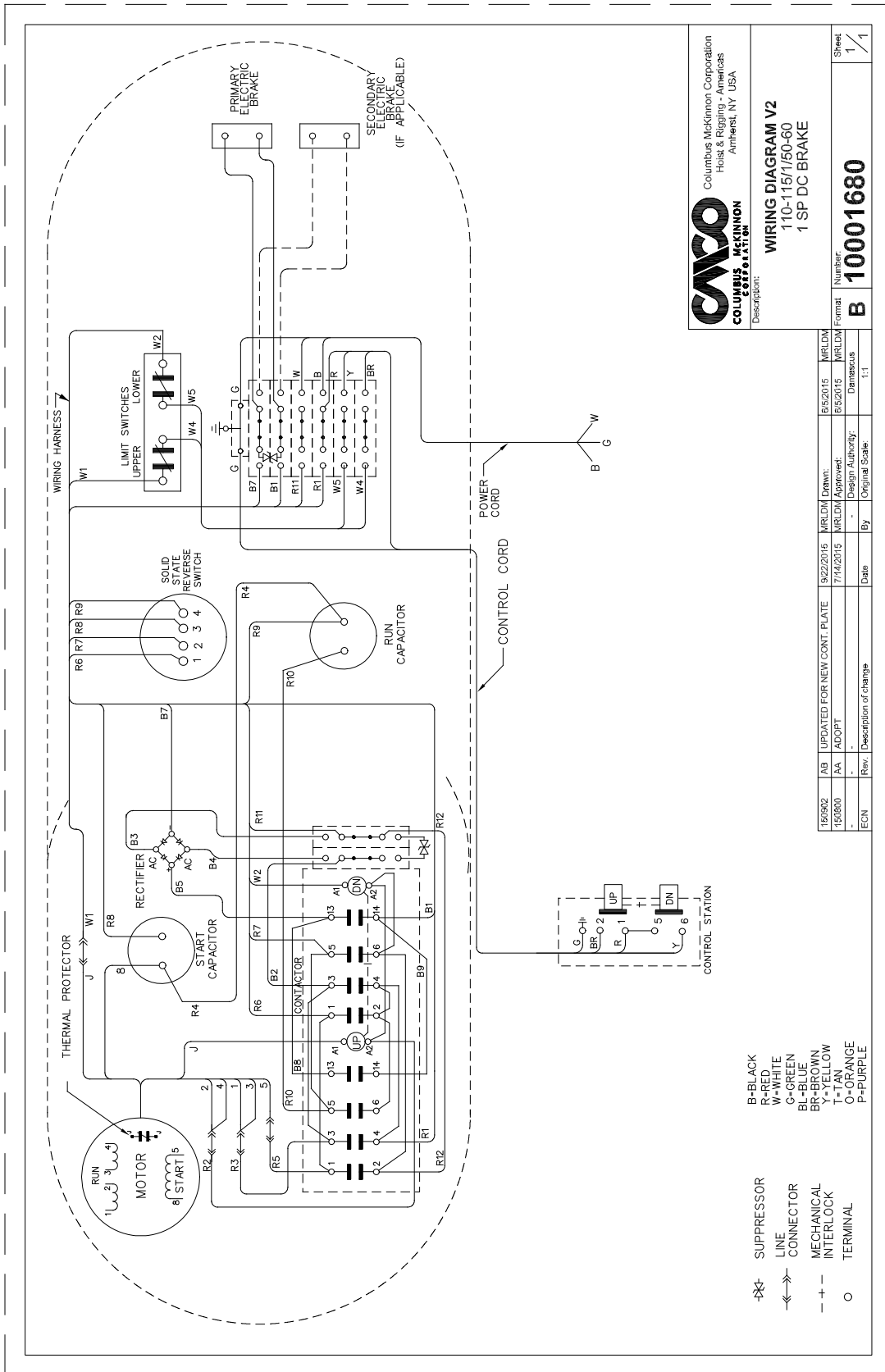
Format: **B** Number: **10001122** Sheet: **1/1**

10/0626	AA	ADAPTED; REDRAWN IN AUTOCAD	11/12/2017	MDTDM	Drawn:	10/01/2014	MSR
-	-	-	-	-	Approved:	10/01/2014	MSR
-	Rev.	Description of change	Date	By	Design Authority:		Damascus
-	-	-	-	-	Original Scale:	1:1	



# MODELS J, L, & R; SINGLE-PHASE; OPTIONAL DC BRAKE

Wiring Diagrams shown are representative. Consult diagram in hoist or furnished with unit.



**CMC** Columbus McKinnon Corporation  
Hoist & Rigging Divisions  
Amherst, NY USA

**COLUMBUS MCKINNON**  
ELECTRIC

WIRING DIAGRAM V2  
110-115/150-60  
1 SP DC BRAKE

Number: **10001680**

Format: **B**

Sheet: **1** / **1**

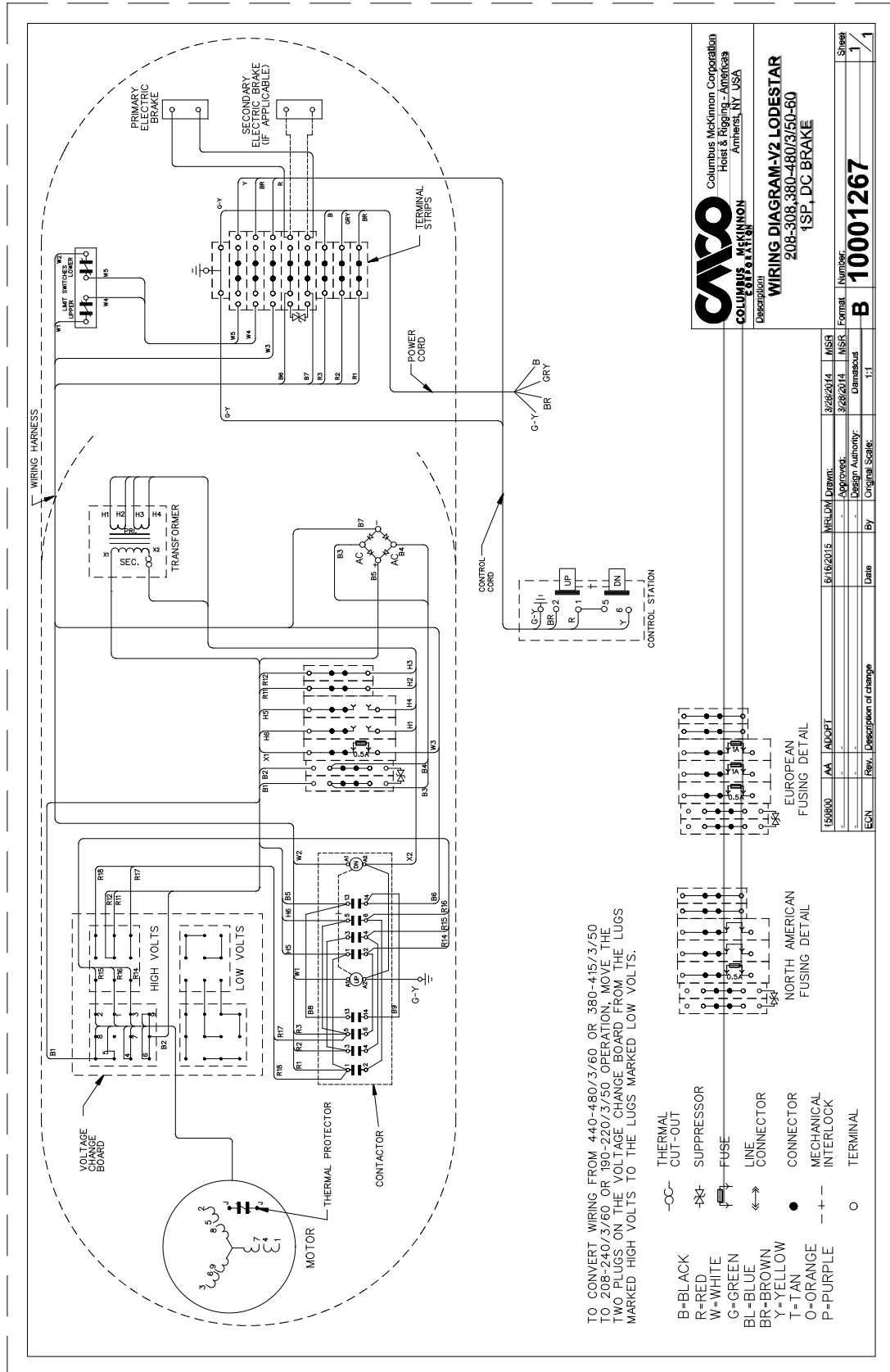
ECN	Rev.	Description of change	Date	By	Original Scale	Design Authority	Drawn	Approved	MRLDM	MRLDM	MRLDM	MRLDM
149202	A8	UPDATED FOR NEW CONT. PLATE	9/22/2016							8/5/2016	8/5/2016	8/5/2016
149800	AA	ADAPT	7/14/2015									

- B- BLACK
- R- RED
- W- WHITE
- G- GREEN
- BL- BLUE
- BR- BROWN
- T- YELLOW
- O- ORANGE
- P- PURPLE

- R- SUPPRESSOR
- <->- LINE CONNECTOR
- + - MECHANICAL INTERLOCK
- o TERMINAL

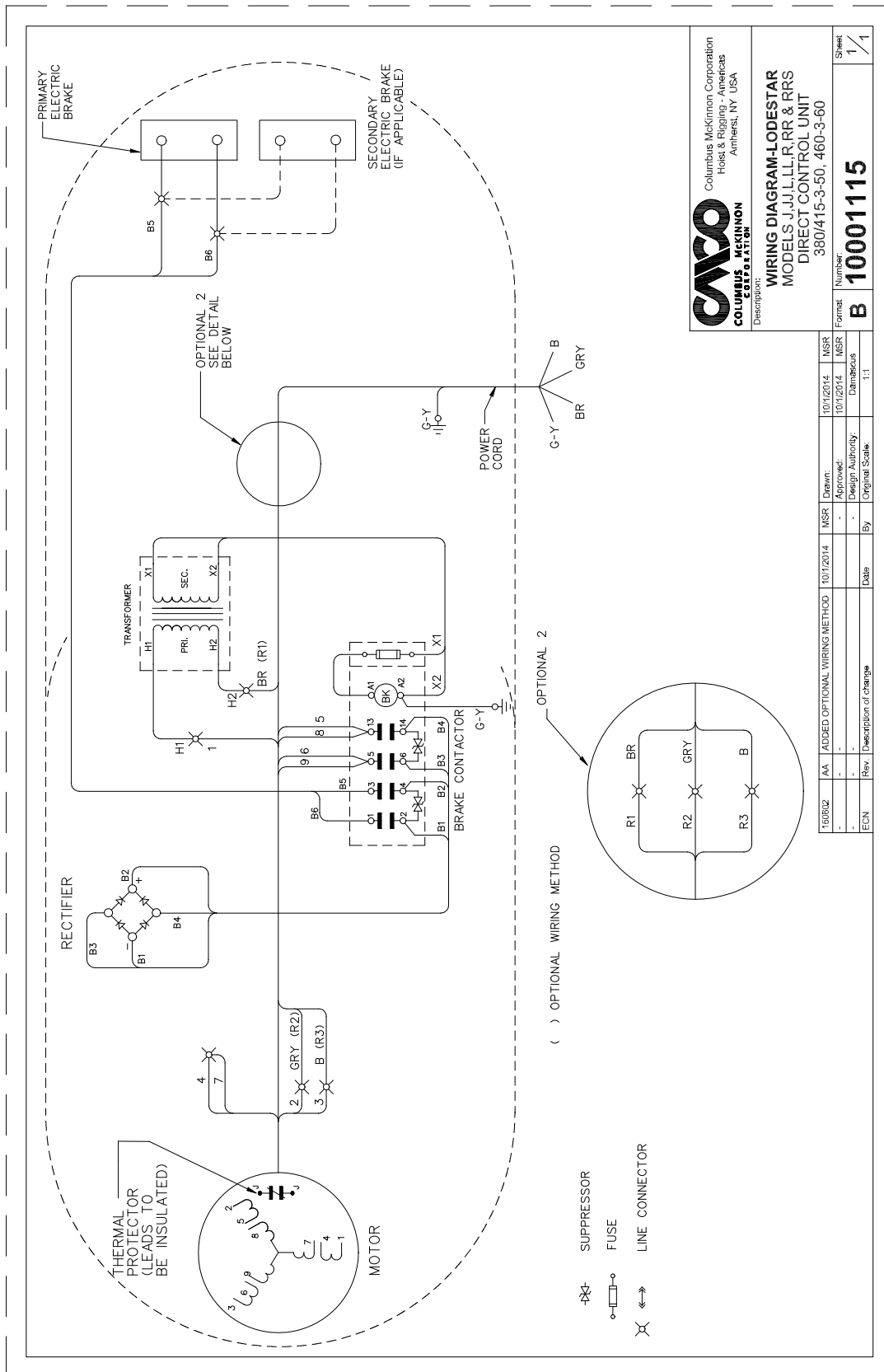
# MODELS J, JJ, L, LL, R, & RR; THREE-PHASE; OPTIONAL DC BRAKE

Wiring Diagrams shown are representative. Consult diagram in hoist or furnished with unit.



# MODELS J, JJ, L, LL, R, & RR; DIRECT CONTROL; OPTIONAL DC BRAKE (VOLTAGE SPECIFIC)

Wiring Diagrams shown are representative. Consult diagram in hoist or furnished with unit.



**CMC**  
COLUMBUS MCKINNON CORPORATION

Columbus McKinnon Corporation  
Hoist & Rigging - Americas  
Amherst, NY USA

Description: **WIRING DIAGRAM-LODESTAR**  
MODELS J, JJ, L, LL, R, RR & RRS  
DIRECT CONTROL UNIT  
380/415-3-50, 460-3-60

Number: **10001115**

Format: **B**

Sheet: **1/1**

160022	AA	ADDED OPTIONAL WIRING METHOD	10/1/2014	MSR	Drawn	10/1/2014	MSR
-	-	-	-	-	-	-	-
-	-	-	-	-	-	-	-
-	-	-	-	-	-	-	-
ECN	Rev.	Description of Change	Date	By	Original Scale	1:1	

# MODELS J, JJ, L, LL, R, & RR; DIRECT CONTROL; OPTIONAL DC BRAKE (VOLTAGE SPECIFIC)

Wiring Diagrams shown are representative. Consult diagram in hoist or furnished with unit.

