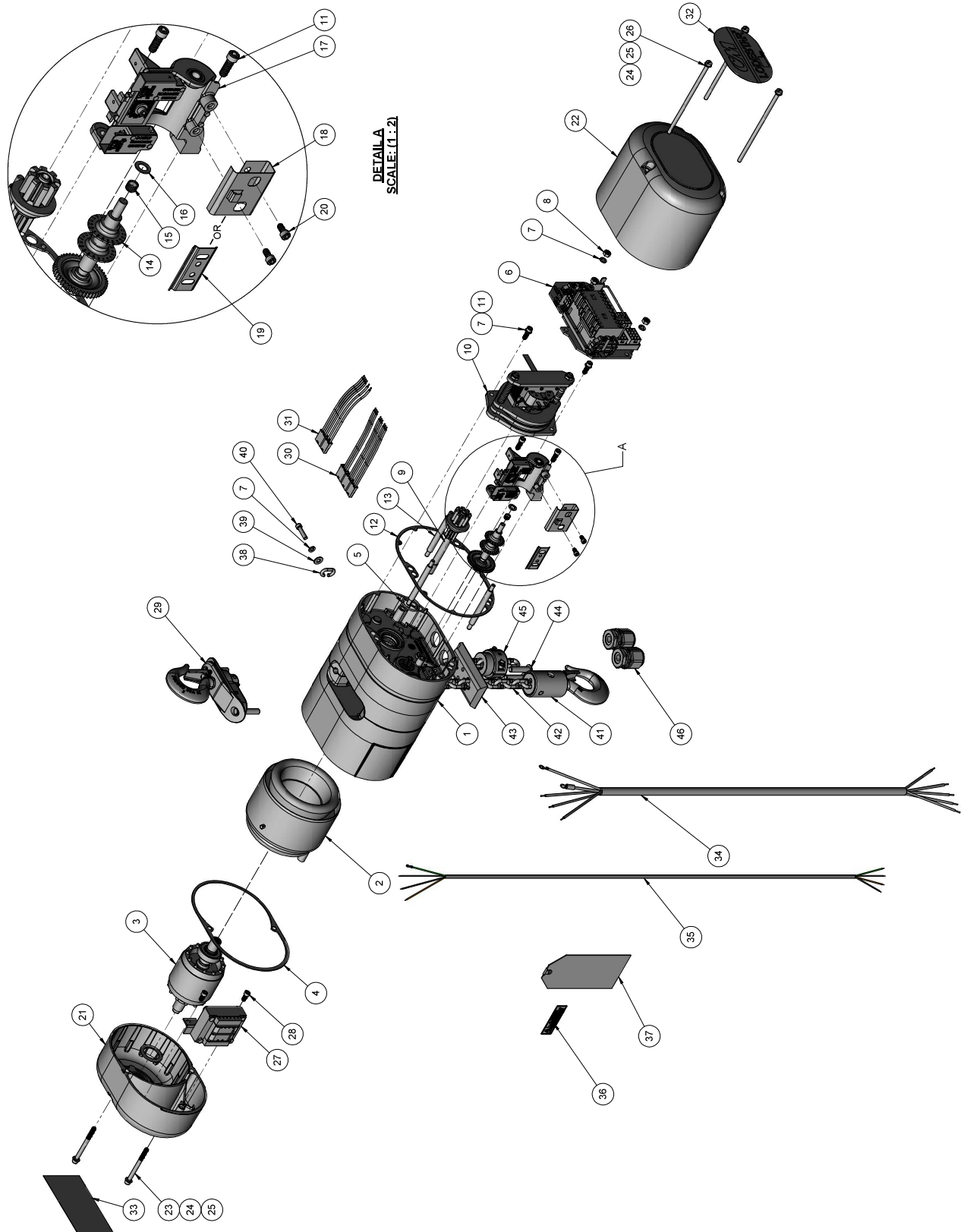


SMALL FRAME MODELS B, C, & F



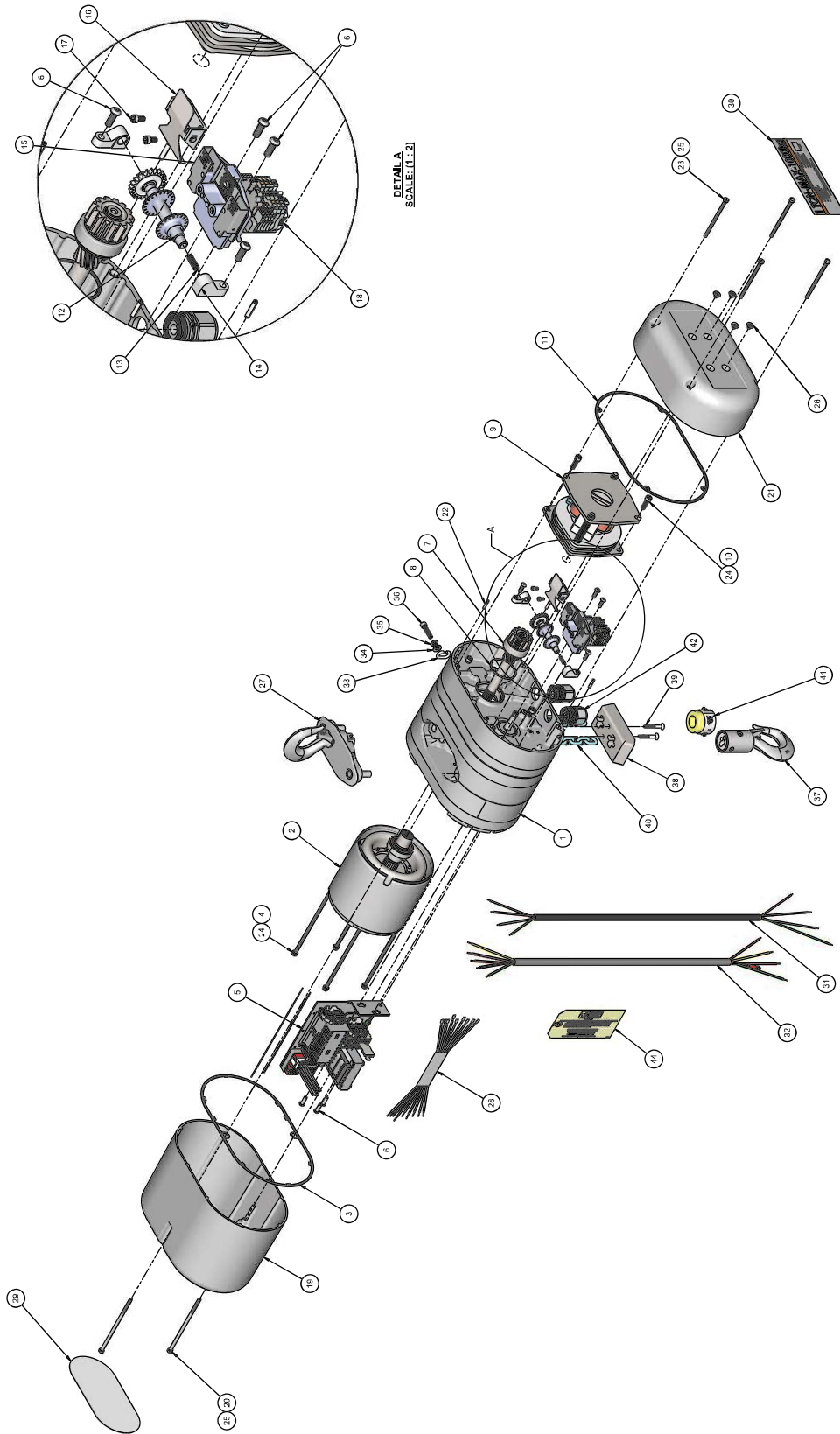
SMALL FRAME MODELS B, C, & F

ITEM NO.	DESCRIPTION	PART NUMBER			QTY.
		MODEL B	MODEL C	MODEL F	
1	GEARBOX SUB-ASSY -- SEE GEARBOX SECTION	10001333B	10001334B	10001335B	1
2	STATOR - 1 PHASE		00000462		1
	STATOR - 3 PHASE		00000461		1
3	ROTOR/SHAFT ASSY - 1/2 HP, 1-PHASE		10001852		1
	ROTOR/SHAFT ASSY - 1/2 HP, 3-PHASE		10001853		
4	MOTOR HOUSING COVER GASKET		27847		1
5	DRIVE SHAFT O-RING		10001355		1
6	CONTACTOR PLATE SUB-ASSY	SEE CONTACTOR PLATE SECTION			1
7	LOCKWASHER		982226		6
8	NUT, 1/4-20UNC-2B HEX		982514		3
9	DRIVE SHAFT ASSEMBLY - AC BRAKE		10001307		1
	DRIVE SHAFT ASSEMBLY - DC BRAKE		10001303		1
10	ELECTRIC BRAKE ASSEMBLY	SEE BRAKE SECTION			1
11	SOCKET HEAD CAP SCREW		10001265		4
12	GASKET - BACKFRAME COVER		10001344		1
13	CONTACTOR MOUNTING PLATE STUD		27836		3
14	LIMIT SWITCH SHAFT S/A		27508		1
15	LIMIT SWITCH SHAFT SPRING		28712		1
16	LIMIT SWITCH SHAFT WASHER		987878		1
17	LIMIT SWITCH BRACKET S/A - 1-PHASE		10001907		1
	LIMIT SWITCH BRACKET S/A - 3-PHASE		10001899		
18	LIMIT SWITCH SPRING GUIDE		52737		1
19	LIMIT SWITCH GUIDE PLATE		28714		1
20	#10-24 X 3/8" SKT HEAD CAP SCREW		10001266		2
21	MOTOR HOUSING COVER		27059		1
22	BRAKE END COVER		10001341B		1
23	1/4-20 X 3" SKT HD CAP SCREW		10001652		2
24	WASHER - .252 ID X .19 WALL		982251		5
25	O-RING 008		00001747		5
26	SOCKET HEAD CAP SCREW		10001653		3
27	TRANSFORMER-230/460 - 24V - 3 PHASE		00000586T		1
	TRANSFORMER-230/460 - 48V - 3 PHASE		00000587T		
	TRANSFORMER-230/460 - 110V - 3 PHASE		00000588T		
28	SOCKET HEAD CAP SCREW		73715		2
29	SWIVEL HOOK SUSPENSION	SEE SUSPENSION SECTION			1
30	WIRING HARNESS - 1-PHASE		0000754		1
	WIRING HARNESS - 3-PHASE		00000752		
	WIRING HARNESS - DIRECT CONTROL		0000748		
31	HARNESS-LVC		00000749		1
32	SERIES LABEL		27238		1
33	CAPACITY PLATE	27277		27278	1
34	CONTROL CORD		23620106		1
35	POWER CORD		23620004		1
36	LABEL, ELECTRICAL WARNING		24842		2
37	INSTRUCTION TAG - 1 PHASE		27991		1
	INSTRUCTION TAG - 3 PHASE		28275		
	INSTRUCTION TAG - DIRECT CONTROL		00000771		
38	LOOSE END LINK		27351		1
39	LOOSE END WASHER		954802		1
40	LOOSE END SOCKET HEAD CAP SCREW		82554		1
41	LOWER HOOK BLOCK SUB-ASSY		28683		1
42	LOAD CHAIN		85889		1
43	EXTERNAL CHAIN PLATE		10001299		1
44	CHAIN PLATE CAP SCREW		00000579		2
45	CHAIN STOP KIT		24015K		1
46	CORD GRIP 3/4" NPT		10001840		2
47*	WARNING TAG		81704		1
48*	PLUG HOLE DEAD END BLOCK		27223		1
49*	ELECTRICAL WARNING LABEL		24842		1
50*	HOIST STORAGE TAG		900K262		1
51*	LABEL, ELECTRICAL INFORMATION		24846		1
52*	CE LABEL		40219		1
53*	CHAIN LABEL		928894		1
54*	LABEL WARNING		36981		1
55*	BACK FRAME COVER POCKET		28945		1

* ITEMS NOT SHOWN IN THE EXPLODED VIEW

** CONTROL CORD CAN BE ORDERED IN 04, 06, 11, 16, 21, 26, 31, 36 FOOT LENGTHS; REPLACE XX WITH LENGTH

LARGE FRAME MODELS J, JJ, L, LL, R, & RR

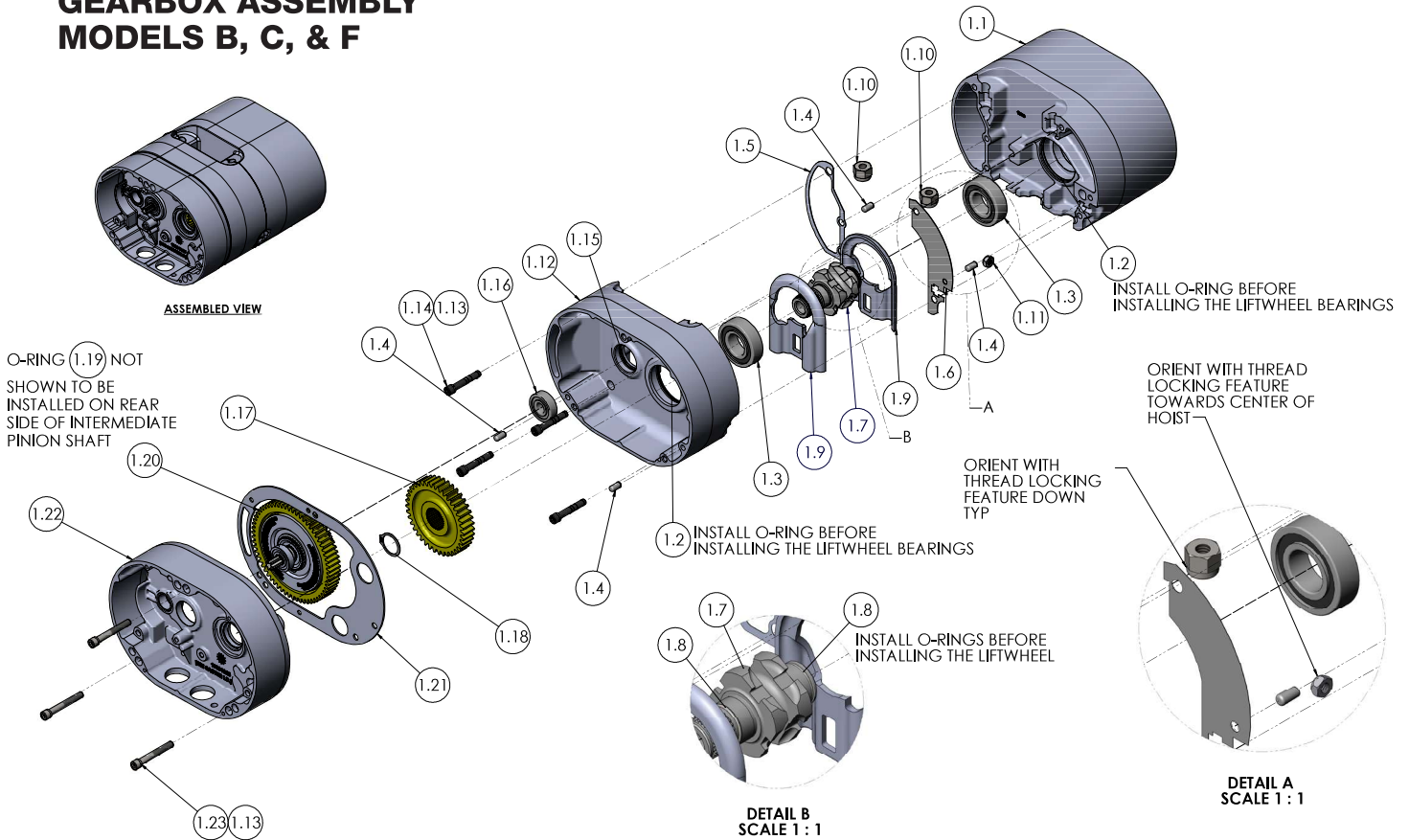


LARGE FRAME MODELS J, JJ, L, LL, R, & RR

ITEM NO.	DESCRIPTION	PART NUMBER						QTY.
		MODEL J	MODEL JJ	MODEL L	MODEL LL	MODEL R	MODEL RR	
1	GEARBOX SUB-ASSEMBLY -- SEE GEARBOX SECTION	10001336B	10001337B	10001338B	10001339B	10001338B	10001339B	1
2	SINGLE-PHASE MOTOR	10001816	--	10001816	--	10001816	--	1
	THREE-PHASE MOTOR	10001830	10001831	10001830	10001831	10001830	10001831	
	THREE-PHASE DIRECT CONTROL MOTOR	10001817	10001818	10001817	10001818	10001817	10001818	
3	MOTOR HOUSING COVER GASKET	35845						1
4	MOTOR SCREW	87377						4
5	CONTACTOR SUB-ASSY	SEE CONTACTOR SECTION						1
6	BUTTON HEAD CAPSCREW-1/4-20 X .75 UNC-2A	983656						7
7	DRIVE SHAFT ASSEMBLY - AC BRAKE	10001311				10001310		1
	DRIVE SHAFT ASSEMBLY - DC BRAKE	10001305				10001304		1
8	DRIVE SHAFT O-RING	10001392						1
9	BRAKE	SEE BRAKES SECTION						1
10	5/16-18 X 1" SOCKET HEAD CAP SCREW	10001697						2
11	GASKET - BACKFRAME COVER	10001345						1
12	LIMIT SWITCH SHAFT ASSEMBLY	36623						1
13	LIMIT SWITCH SPRING	35703						1
14	LIMIT SWITCH BEARING	35751						2
15	LIMIT SWITCH AND BRACKET ASSY	36827						1
16	ROTATABLE LIMIT SWITCH S/A	52500						1
17	LIMIT SWITCH GUIDE MOUNTING SCREW	10001266						2
18	TERMINAL STRIP ASSEMBLY	SEE TERMINAL STRIP SECTION						1
19	MOTOR HOUSING COVER	36025B						1
20	MOTOR COVER SCREW	10001654						2
21	BRAKE-END COVER	10001343B						1
22	BRAKE COVER ALIGNMENT PIN	983784						4
23	BRAKE COVER SCREW	10001655						4
24	LOCKWASHER	982226						6
25	O-RING 008	00001747						6
26	HOLE PLUG	00000574						4
27	SWIVEL HOOK SUSPENSION	SEE SUSPENSION SECTION						1
28	WIRING HARNESS - AC BRAKE	00000747						1
	WIRING HARNESS - DC BRAKE	00001547						1
29	SERIES LABEL	36840						1
30	CAPACITY LABEL	35200		35201		35202		1
31	POWER CORD - 1 PHASE	236207XX	-	236207XX	-	236207XX	-	AS REQ'D
	POWER CORD - 3 PHASE	236205XX**						AS REQ'D
32	CONTROL CORD	236206XX***						AS REQ'D
	CONTROL CORD - DIRECT CONTROL	236209XX***						AS REQ'D
33	LOOSE END LINK	35367						1
34	LOOSE END WASHER	954807						1
35	LOOSE END LOCKWASHER	945851						1
36	LOOSE END SCREW	10001698						1
37	LOWER HOOK BLOCK ASSEMBLY	SEE HOOK SECTION						1
38	EXTERNAL CHAIN PLATE	10001298						1
39	CHAIN PLATE SCREW	10001296						2
40	LOAD CHAIN	85979						AS REQ'D
41	CHAIN STOP KIT	24016K						1
42	CORD GRIP 3/4"	10001840						2
44	INSTRUCTION TAG - 1 PHASE	27991						1
	INSTRUCTION TAG - 3 PHASE	28275						1
45*	ELECTRICAL WARNING LABEL	24842						1
46*	LABEL, ELECTRICAL INFORMATION	24846						1
47*	WARNING LABEL	00000779						1
48*	CHAIN LABEL	928894						1
49*	HOIST STORAGE TAG	900K262						1
50*	DUAL LANGUAGE/VOLTAGE WARNING	927237						1
51*	DEAD END BLOCK HOLE PLUG	35291						1
52*	CE LABEL	40219						1

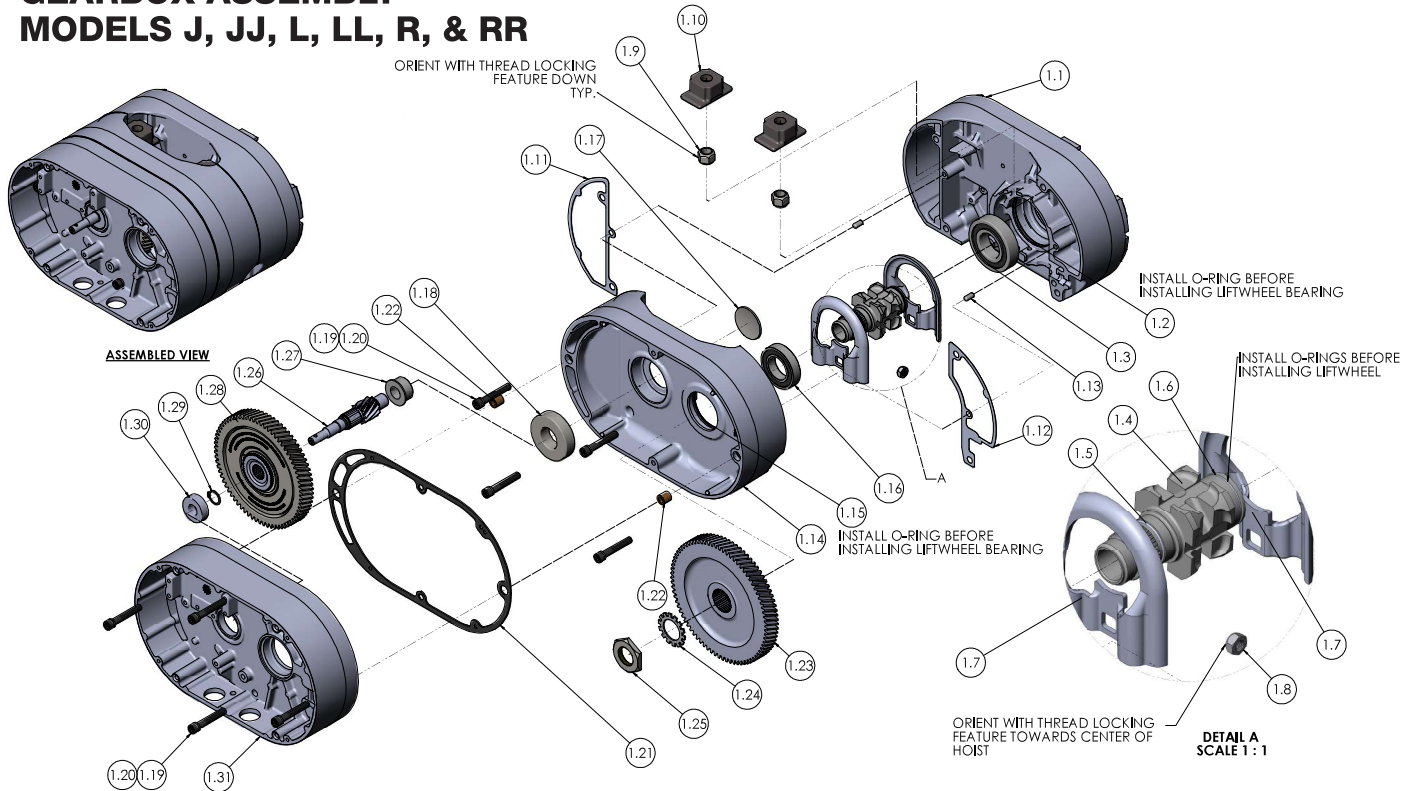
* ITEMS NOT SHOWN IN THE EXPLODED VIEW

GEARBOX ASSEMBLY MODELS B, C, & F



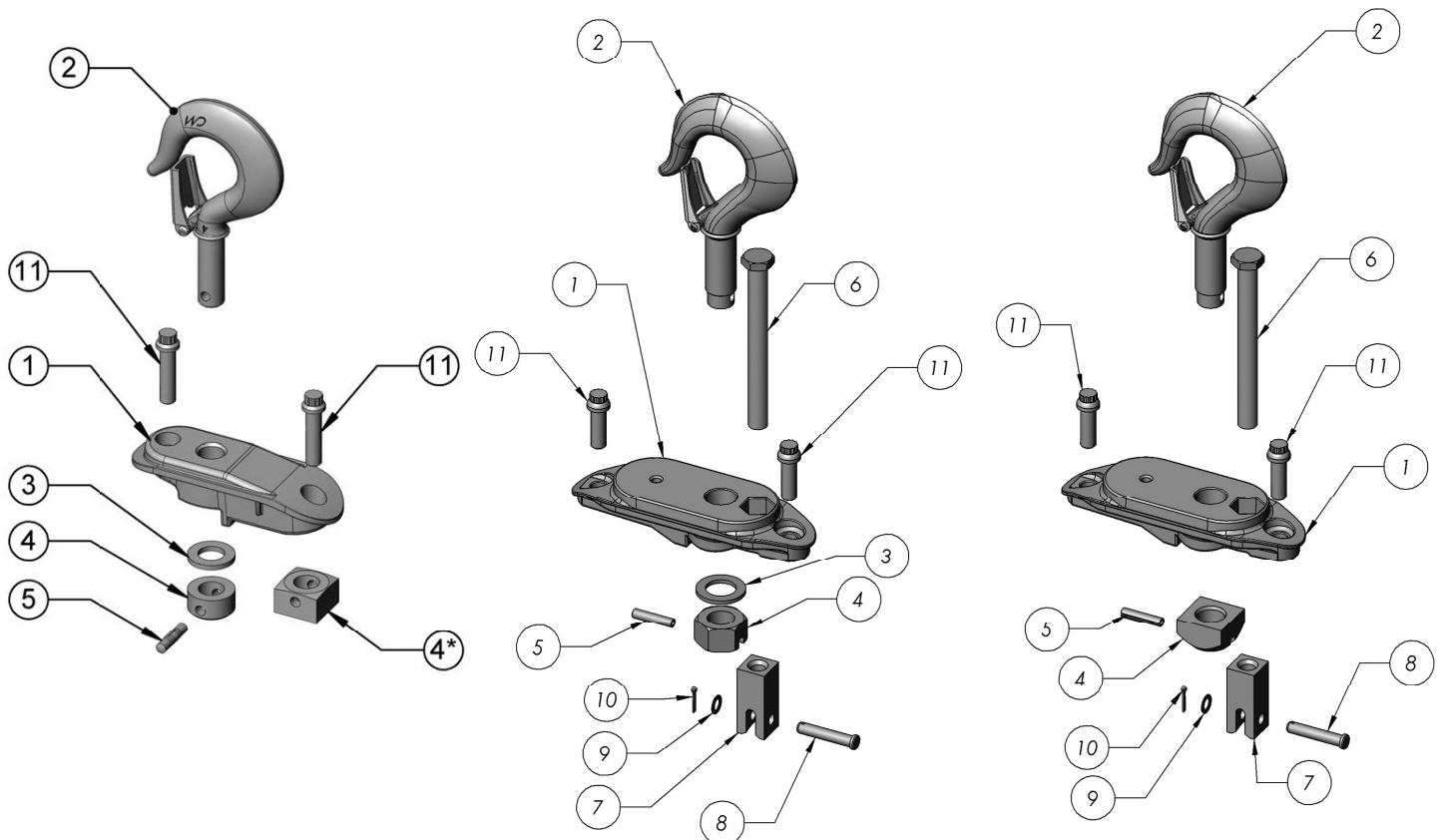
ITEM NO.	DESCRIPTION	MODEL A	MODEL B	MODEL C	MODEL F	QTY
1	GEARBOX SUB-ASSEMBLY	10001332B	10001333B	10001334B	10001335B	--
1.1	MOTOR HOUSING		10001712B			1
1.2	MOTOR HOUSING/LIFT WHEEL O-RING		10001850			2
1.3	MOTOR HOUSING/LIFT WHEEL BEARING		83692			2
1.4	GEARBOX ALIGNMENT PIN		82354			4
1.5	GEARBOX GASKET WIREWAY		10001722			1
1.6	GEARBOX GASKET SPACER		10001723			1
1.7	LIFTWHEEL/SPROCKET		10001718			1
1.8	LIFTWHEEL O-RING		10001363			2
1.9	CHAIN GUIDE		27008			2
1.10	SUSPENSION ADAPTER NUT		927755			2
1.11	LOOSE END NUT		82638			1
1.12	GEAR HOUSING		10001713			1
1.13	LOCKWASHER		940802			7
1.14	GEARBOX SCREW		28830			4
1.15	GEAR HOUSING/INTERMEDIATE PINION RING		10001390			1
1.16	BALL BEARING 6201		912307903			1
1.17	LIFTWHEEL GEAR	27010	27009	27010	27009	1
1.18	RETAINING RING		27767			1
1.19	INTERMEDIATE PINION SHAFT O-RING		10001857			1
1.20	INTERMEDIATE PINION ASSY	10001862	10001864	10001865	10001866	1
1.21	GEARBOX GASKET		10001346			1
1.22	BACKFRAME - SUB-ASSEMBLY		10001327			1
1.23	BACKFRAME SCREW		982699			3

GEARBOX ASSEMBLY MODELS J, JJ, L, LL, R, & RR



ITEM NO.	DESCRIPTION	MODEL J	MODEL JJ	MODEL L & R	MODEL LL & RR	QTY
1	GEARBOX ASSEMBLY	10001336B	10001337B	10001338B	10001339B	1
1.1	MOTOR HOUSING		10001714B			1
1.2	MOTOR HOUSING / LIFTWHEEL BEARING O-RING		10001362			1
1.3	MOTOR HOUSING / LIFTWHEEL BEARING		500K40			1
1.4	LIFTWHEEL / SPROCKET		10001719			1
1.5	LIFTWHEEL O-RING, GEAR HOUSING SIDE		10001389			1
1.6	LIFTWHEEL O-RING, MOTOR HOUSING SIDE		10001390			1
1.7	CHAIN GUIDE		10001507			2
1.8	LOOSE-END NUT		82639			1
1.9	SUSPENSION ADAPTER NUT		935791			2
1.10	SUSPENSION ADAPTER ANCHOR		35066			2
1.11	GASKET, GEARBOX WIREWAY		10001725			1
1.12	GASKET, GEARBOX SPACER		10001724			1
1.13	GEARBOX ALIGNMENT PIN		82354			2
1.14	GEAR HOUSING		10001715B			1
1.15	GEAR HOUSING / LIFTWHEEL BEARING O-RING		10001851			1
1.16	GEAR HOUSING / LIFTWHEEL BEARING		10001360			1
1.17	EXPANSION PLUG		935495			1
1.18	GEAR HOUSING / INTERMEDIATE PINION BEARING		015120800			1
1.19	GEARBOX SCREW		982682			8
1.20	LOCKWASHER		940830			8
1.21	GASKET, BACK FRAME TO GEAR HOUSING		10001347			1
1.22	BACK FRAME ALIGNMENT PIN		35768			2
1.23	LIFTWHEEL GEAR	35009	35639	35009	35639	1
1.24	LIFTWHEEL WASHER		986276			1
1.25	LIFTWHEEL GEAR NUT		35773			1
1.26	INTERMEDIATE PINION	35351	35420	35351	35420	1
1.27	INTERMEDIATE GEAR/PINION SHAFT ADAPTER	24350	-	24350	-	1
1.28	OVERLOAD CLUTCH ASSEMBLY	36668	36669	36670	36671	1
1.29	INTERMEDIATE GEAR RETAINING RING		35763			1
1.30	BACK FRAME / INTERMEDIATE PINION BEARING		88437			1
1.31	BACK FRAME		10001329B			1

UPPER SUSPENSIONS



Swivel & Rigid Hook Assembly
SINGLE REEVE

Swivel Hook Assembly
DOUBLE REEVE

Swivel Hook Assembly
DOUBLE REEVE

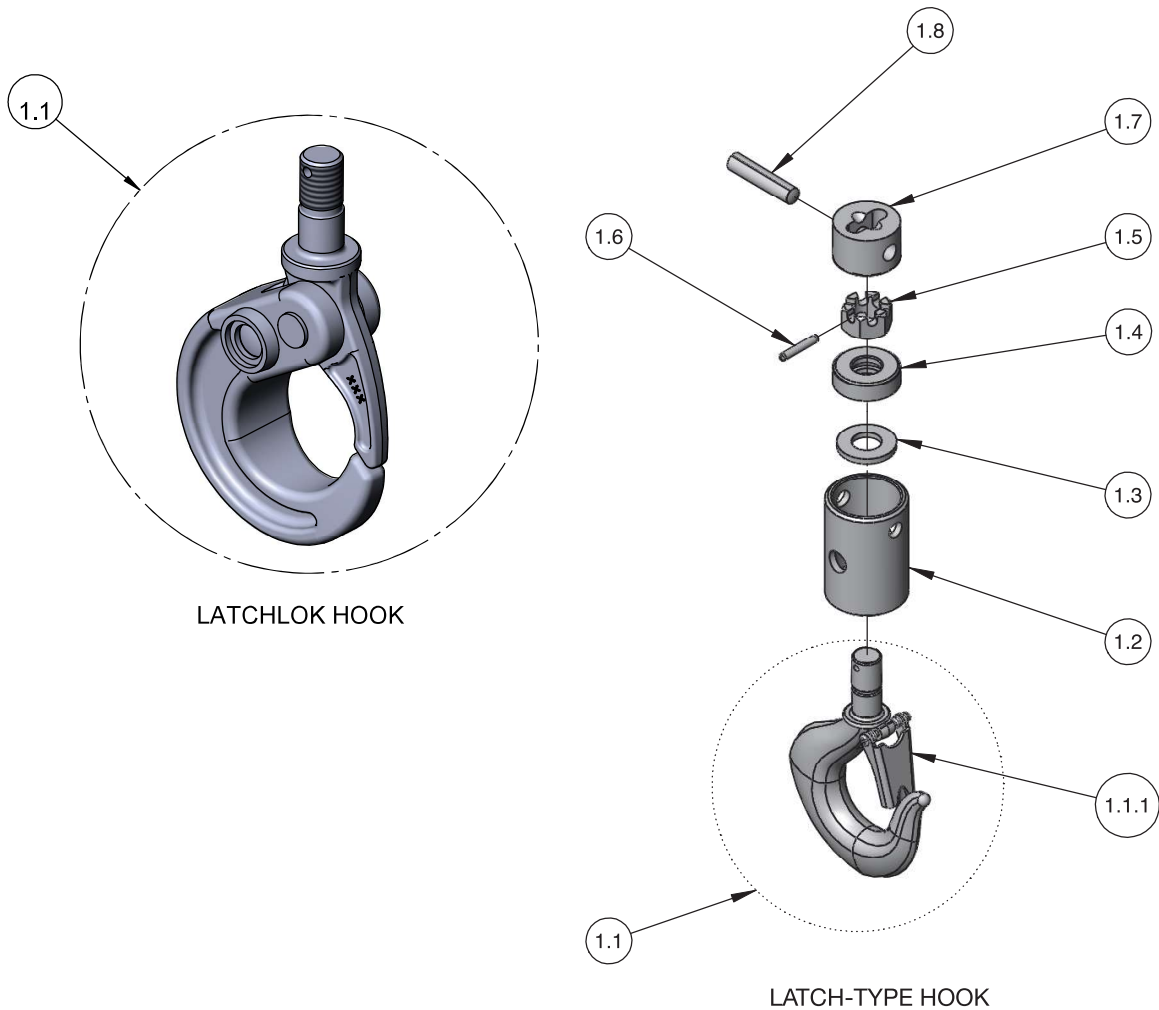
ITEM NO.	DESCRIPTION	SMALL FRAME PART NUMBERS	LARGE FRAME PART NUMBERS		QTY.
		MODELS B, C, & F	MODELS J, L, & LL	MODELS R & RR	
1	SWIVEL SUSPENSION ASSEMBLY - W/ LATCH TYPE HOOK	2792	3661	3660	1
	SWIVEL SUSPENSION ASSEMBLY - W/ LATCHLOK TYPE HOOK	2796	3662	3663	
	RIGID SUSPENSION ASSEMBLY - W/ LATCH TYPE HOOK	2788	3651	3658	
	RIGID SUSPENSION ASSEMBLY - W/ LATCHLOK TYPE HOOK	2790	3652	-	

ITEM NO.	DESCRIPTION	SMALL FRAME PART NUMBERS	LARGE FRAME PART NUMBERS		QTY.
		MODELS B, C, & F	MODELS J, L, & LL	MODELS R & RR	
1	SUSPENSION ADAPTER	27703B	35740B	35741B	1
2	UPPER HOOK SUB-ASSEMBLY - LATCH TYPE	28689B	35617B	35616B	1
	UPPER HOOK SUB-ASSEMBLY - LATCHLOK TYPE	28643	36678	36680	
2.1	LATCH KIT	45661	45662	45663	1**
3	THRUST WASHER (FOR SWIVEL SUSPENSIONS ONLY)	27786	45930	45918	1
4	UPPER HOOK COLLAR FOR SWIVEL SUSPENSIONS	27350	35042	35041	
4*	UPPER HOOK COLLAR FOR RIGID HOOK AND LUG SUSPENSIONS	27372	35458	35426	1
5	SPRING PIN	27805	983763 for Rigid Susp. 983764 for Swivel Susp.	983761 for Rigid Susp. 983762 for Swivel Susp.	1
6	DEAD END BOLT	-	-	35957	1
7	DEAD END BLOCK	-	-	35418	1
8	DEAD END PIN	-	-	82314	1
9	DEAD END WASHER	-	-	987877	1
10	COTTER PIN	-	-	10036205	1
11	SUSPENSION SCREW	987554	36849		2

*Contact factory for Latchlok hooks and assemblies

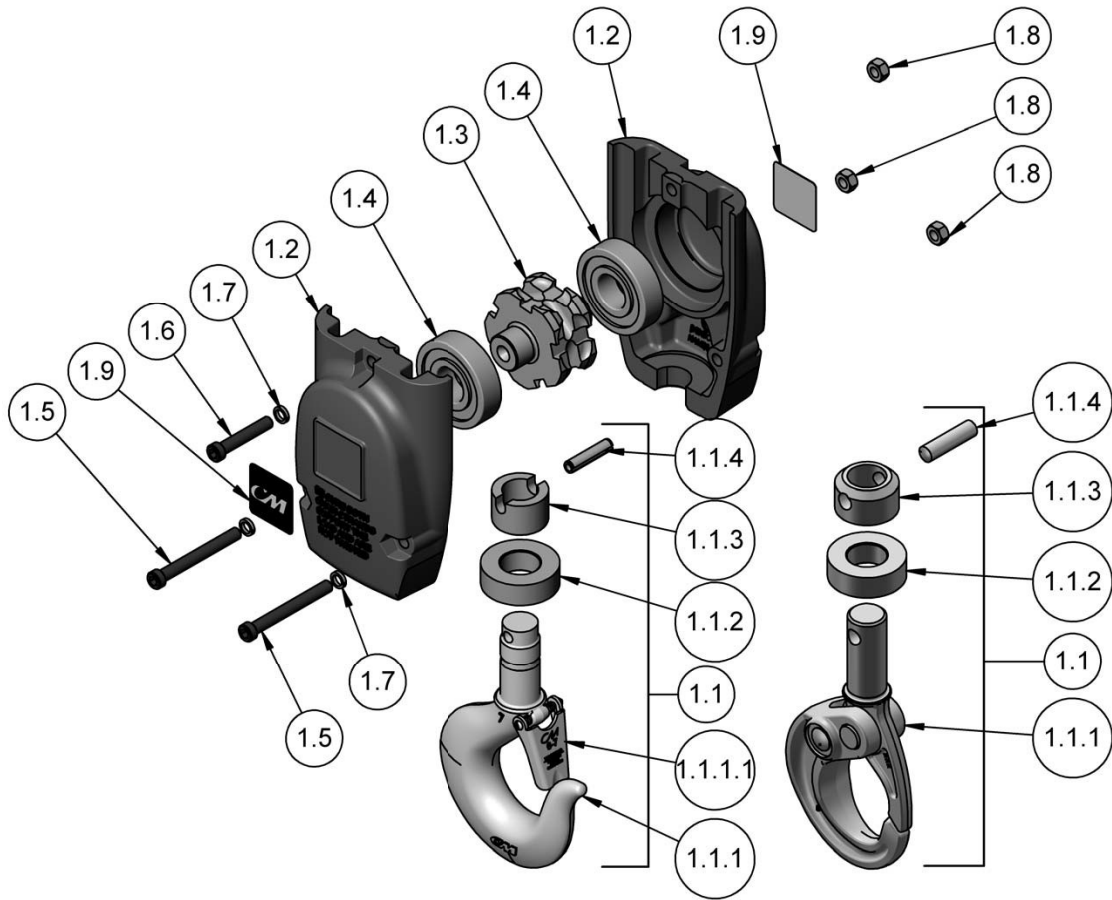
**Latch Type hooks assemblies come with latches installed

LOWER HOOK BLOCKS-SINGLE REEVED



ITEM NO.	DESCRIPTION	SINGLE-REEVED MODELS		QTY.
		A, A-2, AA, AA-2, B, B-2, C, C-2, F, F-2	J, JJ, L, & LL	
1	KIT, LATCH TYPE LOWER HOOK	28683	35651	1
	KIT, LATCHLOK WITH LATCH	1051		
1.1	LOWER HOOK WITH LATCH	28686	35611	1
	LATCHLOK TYPE HOOK	28604		
1.1.1	LATCH KIT (LATCH TYPE HOOK ONLY)	45661	45662	1
1.2	LOWER HOOK BLOCK	45401B	35370	1
1.3	LOWER HOOK WASHER	945921		1
1.4	LOWER HOOK THRUST BEARING	88485		1
1.5	LOWER HOOK NUT	982526		1
1.6	LOWER HOOK NUT PIN	983772		1
1.7	LOWER HOOK CHAIN BLOCK	28007	35026	1
1.8	LOWER HOOK CHAIN BLOCK PIN	45943	35790	1

LOWER HOOK BLOCKS DOUBLE REEVED



LATCH-TYPE HOOK

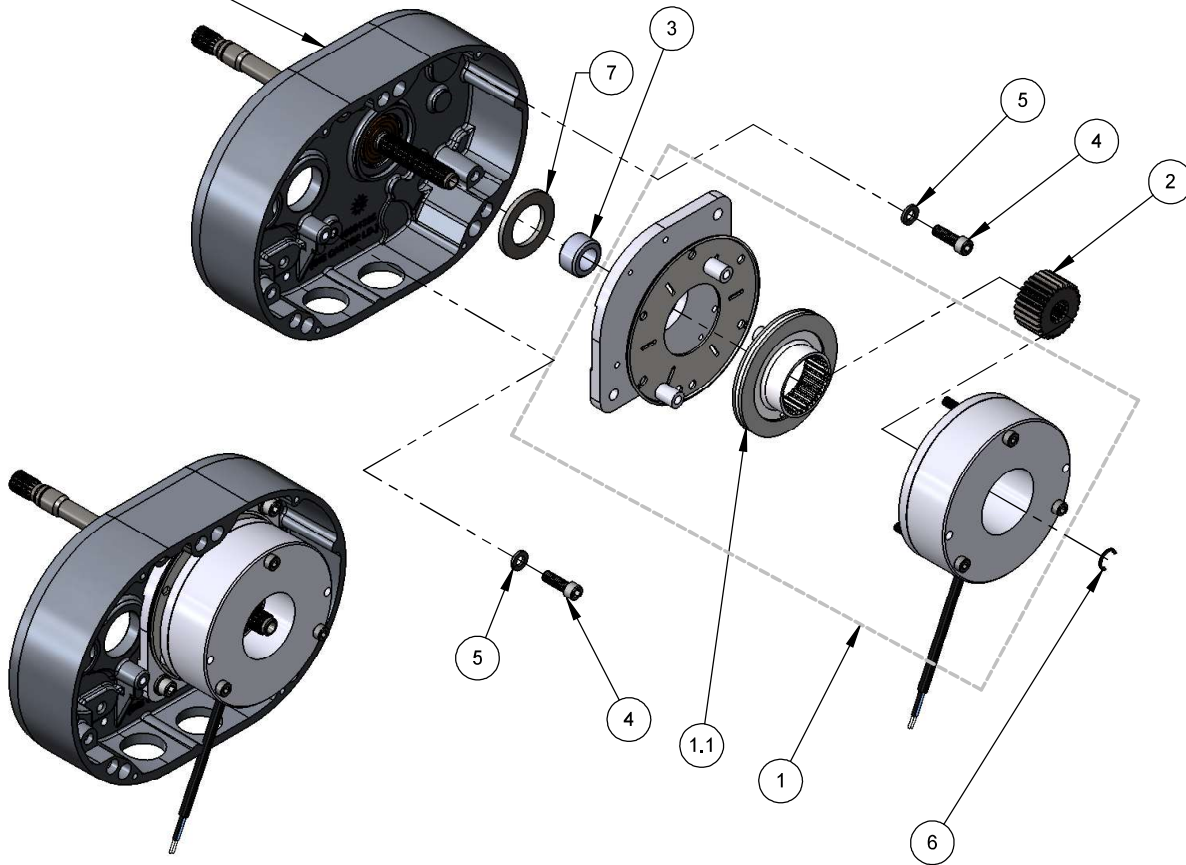
LATCHLOK TYPE HOOK

ITEM NO.	DESCRIPTION	MODELS R & RR	QTY.
1	LOWER HOOK BLOCK ASSEMBLY - LATCH-TYPE HOOK	192045793	1
	LOWER HOOK BLOCK ASSEMBLY - LATCHLOK TYPE HOOK	10001706	
1.1	LOWER HOOK ASSEMBLY W/LATCH & BEARING	192042878	1
	LOWER LATCHLOK HOOK ASSEMBLY W/ BEARING	--*	
1.1.1	LOWER HOOK W/ LATCH	192045914	1
	LATCHLOK HOOK	36681	
1.1.1.1	LATCH KIT (LATCH-TYPE HOOK ONLY)	45663	1
1.1.2	HOOK THRUST BEARING	88505	1
1.1.3	COLLAR, LATCH-TYPE HOOK	36352	1
	COLLAR, LATCHLOK TYPE HOOK	35369	
1.1.4	PIN, LATCH-TYPE HOOK	983762	1
	PIN, LATCHLOK TYPE HOOK	45946	
1.2	HOOK BLOCK, DOUBLE-REEVE	00000276B	2
1.3	HOOK BLOCK SHEAVE WHEEL	00000274	1
1.4	BEARING	83674	2
1.5	LONG HOOK BLOCK BOLT	982374	2
1.6	SHORT HOOK BLOCK BOLT	982370	1
1.7	LOCKWASHER	940830	3
1.8	LOCKNUT	982445	3
1.9	CM LABEL	00000766	2

* Contact CM for LatchLok part numbers

SINGLE DC BRAKE MODELS B, C, & F

BACK FRAME
w/ DRIVE SHAFT
& O-RING

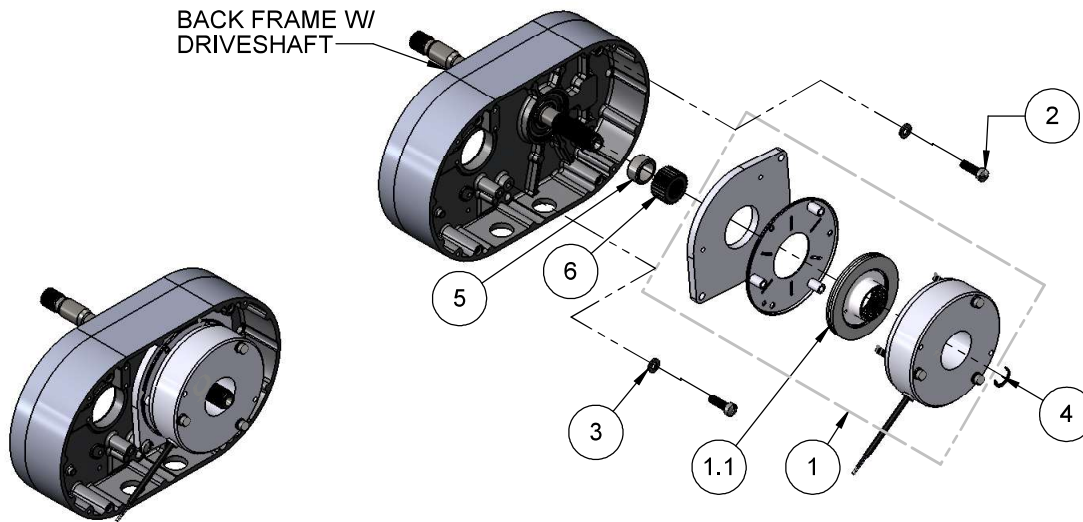


ASSEMBLED VIEW

BRAKE ASSEMBLY ITEM 1	HOIST MOTOR VOLTAGE	BRAKE COIL VOLTAGE
10001243	110/115 -1-50/60	103VDC
10001244	220/230-1-50/60 220/230-3-50/60 380/415/480-3-50/60	205VDC

ITEM NO.	PART NO.	DESCRIPTION	QTY.
1	SEE TABLE	BRAKE ASSEMBLY	1
1.1	10001252	BRAKE ROTOR, DC BRAKE	1
2	00001430	BRAKE HUB, DC BRAKE	1
3	00001432	HUB SPACER DC BRAKE	1
4	10001265	BRAKE SCREW	2
5	940802	LOCKWASHER	2
6	10409710	RETAINING RING	1
7	10001309	SPACER	1

SINGLE DC BRAKE MODELS J, JJ, L, LL, R, & RR

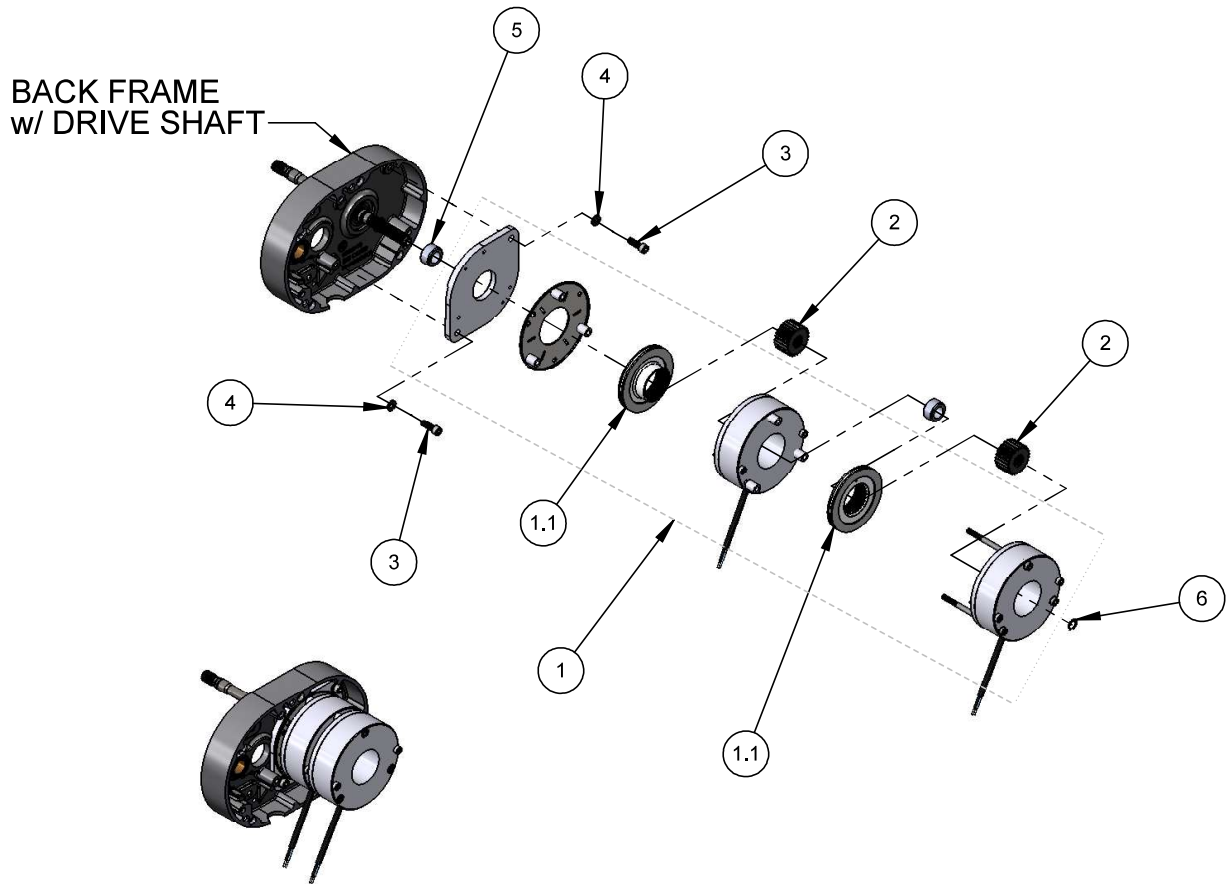


ASSEMBLED VIEW

HOIST MODEL	BRAKE ASSEMBLY ITEM 1	HOIST MOTOR VOLTAGE	BRAKE COIL VOLTAGE
J, L, R	10001246	110/115-1-50/60 220/230-1-50/60	103VDC
	10001247	220/230-1-50/60 220/230-3-50/60 380/415/480-3-50/60	205VDC
JJ, LL, RR	10001249	220/230-3-50/60 380/415/480-3-50/60	205VDC

ITEM NO.	PART NO.	DESCRIPTION	QTY.
1	SEE TABLE	DC BRAKE ASSEMBLY	1
1.1	10001253	BRAKE ROTOR, DC BRAKE	1
2	10001697	BRAKE SCREW	2
3	945851	LOCKWASHER	2
4	10409711	RETAINING RING	1
5	00001433	HUB SPACER DC BRAKE	1
6	00001431	BRAKE HUB, DC BRAKE	1

DOUBLE DC BRAKE MODELS B, C, & F

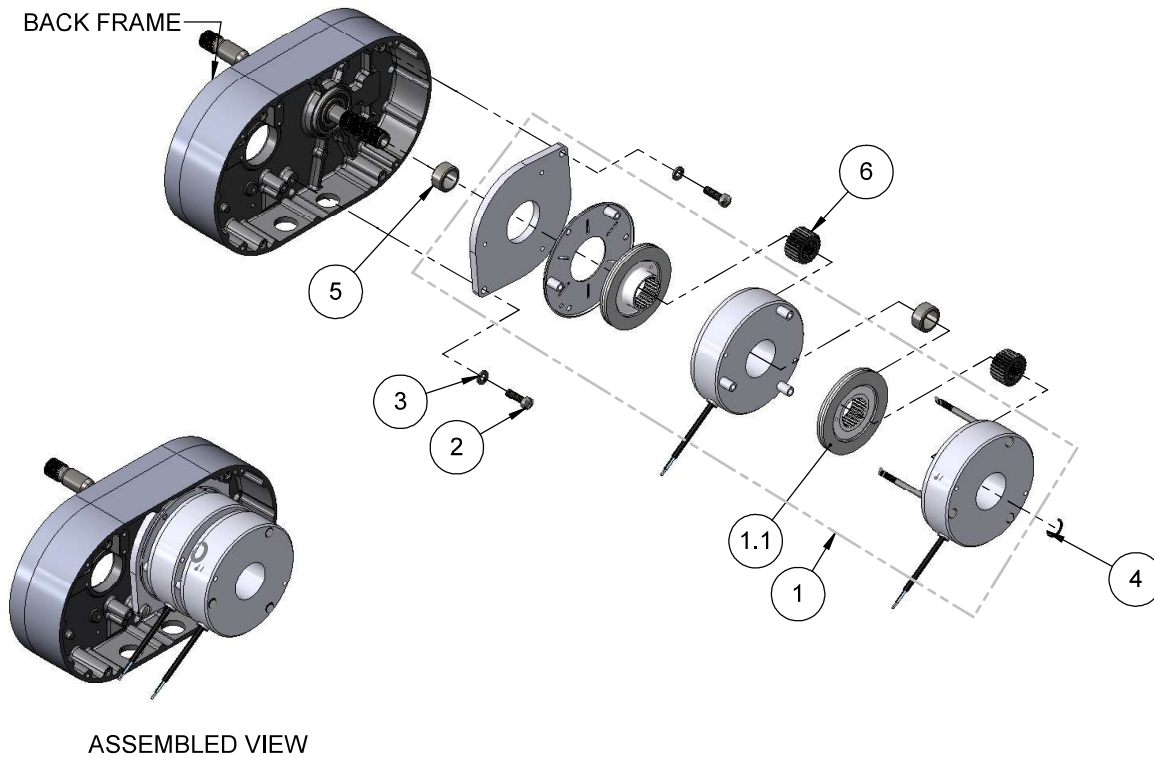


ASSEMBLED VIEW

BRAKE ASSEMBLY ITEM 1	HOIST MOTOR VOLTAGE	BRAKE COIL VOLTAGE
10001447	220/230-1-50/60 220/230-3-50/60 380/415/480-3-50/60	205VDC

ITEM NO.	PART NO.	DESCRIPTION	QTY.
1	SEE TABLE	DC BRAKE ASSEMBLY	1
1.1	10001252	BRAKE ROTOR, DC BRAKE	2
2	00001430	BRAKE HUB, DC BRAKE	2
3	10001265	BRAKE SCREW	2
4	982226	LOCKWASHER	2
5	00001432	HUB SPACER, DC BRAKE	1
6	27766	SNAP RING	1

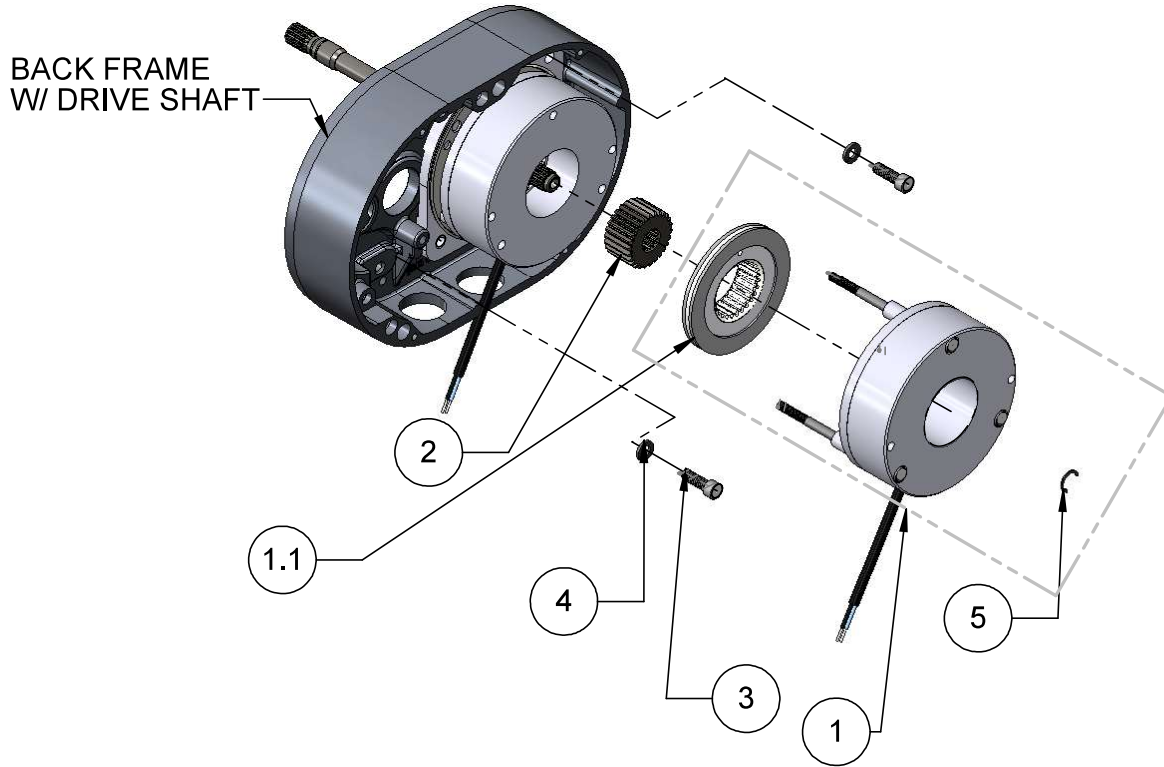
DOUBLE DC BRAKE MODELS J, JJ, L, LL, R, & RR



HOIST MODEL	BRAKE ASSEMBLY ITEM 1	HOIST MOTOR VOLTAGE	BRAKE COIL VOLTAGE
J, L, R	10001450	220/230-1-50/60 220/230-3-50/60 380/415/480-3-50/60	205VDC
JJ, LL, RR	10001452	220/230-3-50/60 380/415/480-3-50/60	205VDC

ITEM NO.	PART NO.	DESCRIPTION	QTY.
1	SEE TABLE	DC BRAKE ASSEMBLY	1
1.1	10001253	BRAKE ROTOR, DC BRAKE	2
2	10001697	BRAKE SCREW	2
3	945851	LOCKWASHER	2
4	35766	RETAINING RING	1
5	00001433	HUB SPACER DC BRAKE	2
6	00001431	BRAKE HUB, DC BRAKE	2

LODESTAR DC BRAKE - SINGLE TO DOUBLE CONVERSION MODELS B, C, & F

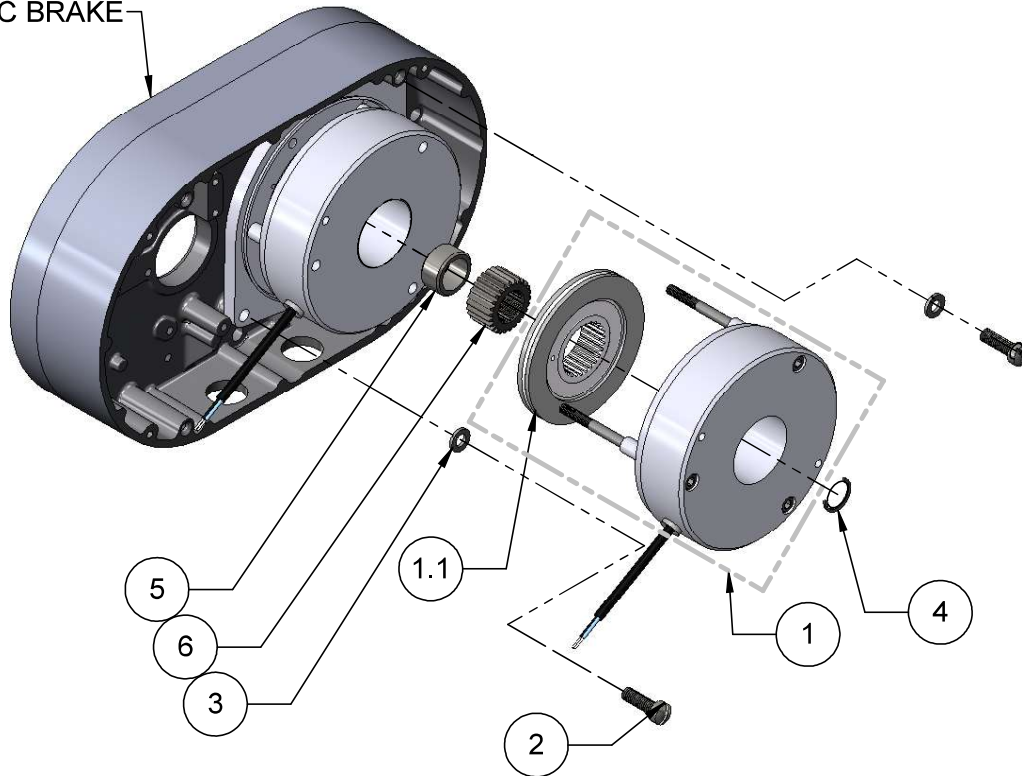


BRAKE ASSEMBLY ITEM 1	HOIST MOTOR VOLTAGE	BRAKE COIL VOLTAGE
10001454	110/115-1-50/60	103VDC
10001455	220/230-1-50/60 220/230-3-50/60 380/415/480-3-50/60	205VDC

ITEM NO.	PART NO.	DESCRIPTION	QTY.
1	SEE TABLE	V1 LODESTAR, SIZE 8 BRAKE	1
1.1	10001252	V1 LODESTAR, SIZE 8 ROTOR	1
2	00001430	V1 LODESTAR, SIZE 8 HUB	2
3	10001265	1/4-20 X 3/4 SKT HEAD SCREW	2
4	982226	LOCKWASHER 1/4 X .109 X .062"	2
5	27766	ROTOR CLIP RETAINING RING	1

DC BRAKE - SINGLE TO DOUBLE CONVERSION MODELS J, JJ, L, LL, R, & RR

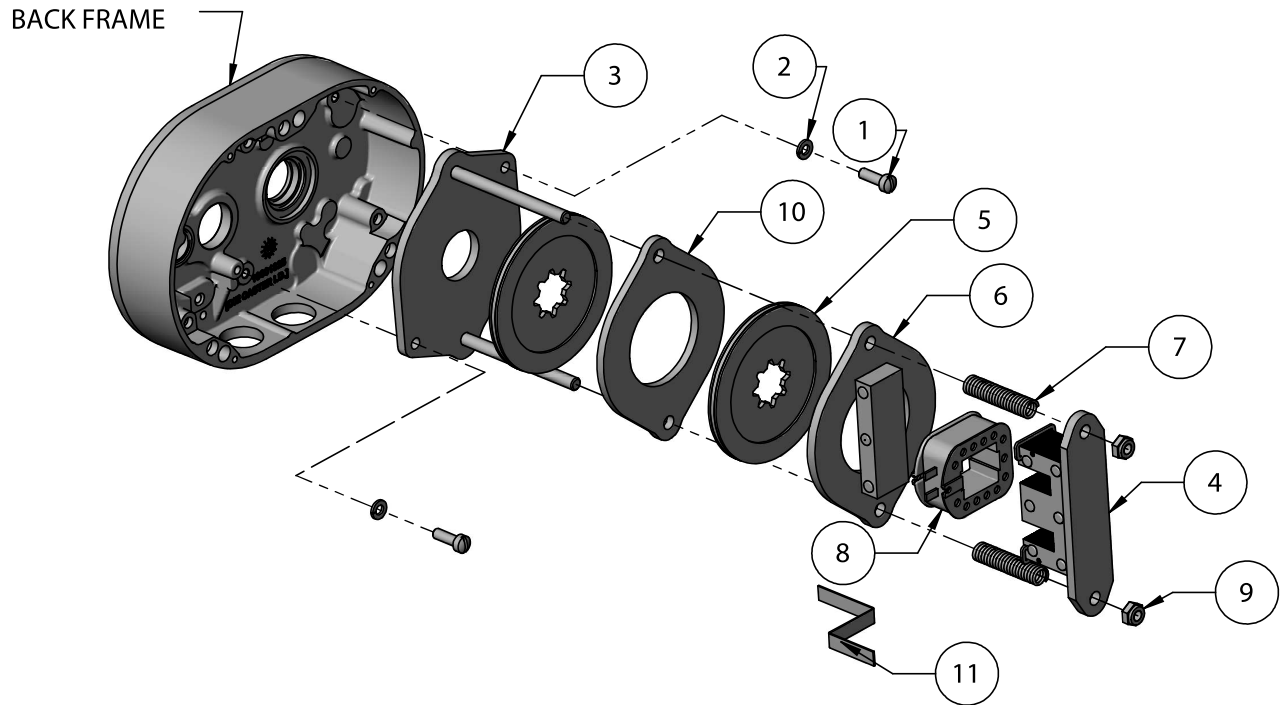
BACK FRAME W/
SINGLE DC BRAKE



HOIST MODEL	BRAKE ASSEMBLY KIT ITEM 1	HOIST MOTOR VOLTAGE	BRAKE COIL VOLTAGE
J, L, R	10001457	110/115-1-50/60	103VDC
	10001458	220/230-1-50/60 220/230-3-50/60 380/415/480-3-50/60	205VDC
JJ, LL, RR	10001460	220/230-1-50/60 220/230-3-50/60 380/415/480-3-50/60	205VDC

ITEM NO.	PART NO.	DESCRIPTION	QTY.
1	SEE TABLE	#10 DOUBLE BRAKE	1
1.1	10001253	V2 LODESTAR, SIZE 10 ROTOR	1
2	982709	SCREW 5/16-18 UNC-2A X 1"	2
3	945851	LOCKWASHER, 5/16 X .125 X .078	2
4	35766	ROTOR CLIP RETAINING RING	1
5	00001433	HUB SPACER V2 DC INTORQ BRAKE	1
6	00001431	V2 LODESTAR, SIZE 10 HUB	1

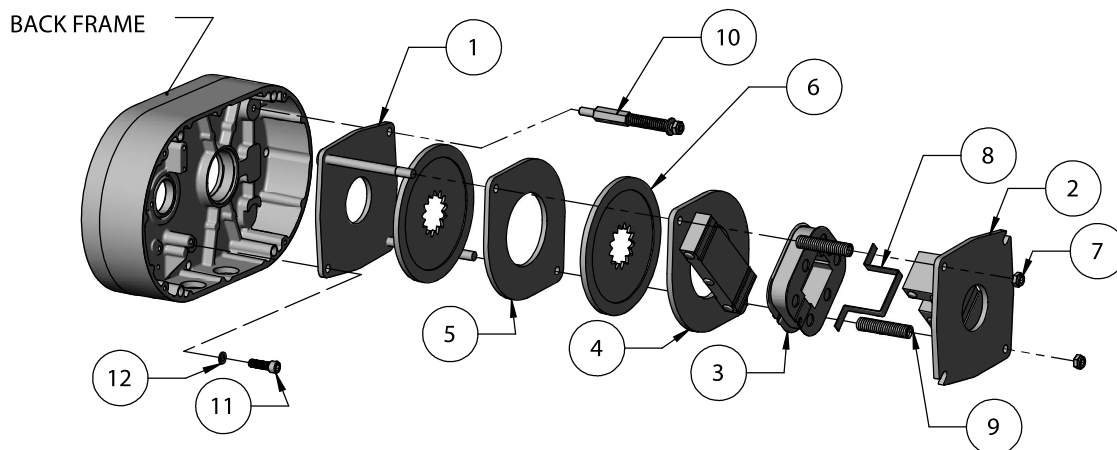
AC BRAKE MODELS B, C, & F



HOIST PHASING	BRAKE ASSEMBLY	BRAKE COIL
1 PHASE	27681	51517
3 PHASE	27684	51518

ITEM NO.	PART NO.	DESCRIPTION	QTY.
1	10001265	BRAKE SCREW	2
2	982226	LOCKWASHER	2
3	28668	BRAKE BASE PLATE W/ STUDS	1
4	28677	BRAKE FIELD ASSEMBLY	1
5	27677	BRAKE FRICTION DISC	2
6	28678	BRAKE ARMATURE ASSEMBLY	1
7	27751	BRAKE SPRING	2
8	SEE TABLE	BRAKE COIL	1
9	945840	BRAKE STUD NUT	2
10	27090	BRAKE INTERMEDIATE PLATE	1
11	57753	COIL RETAINER STRAP	1

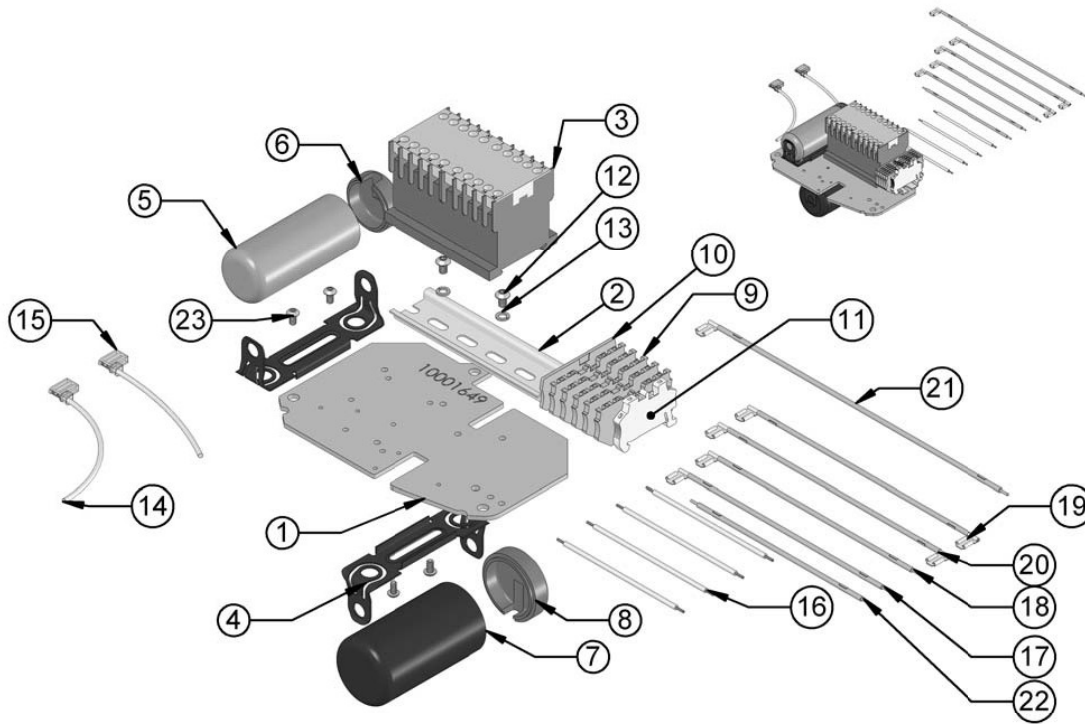
AC BRAKE MODELS J, JJ, L, LL, R & RR



HOIST PHASING	MODEL	BRAKE ASSEMBLY	BRAKE SPRING	BRAKE COIL
3 PHASE	J, L, R	35647	35716	51511
3 PHASE	JJ, LL, RR	35648	35717	51512
1 PHASE	J, L, R	35646	35716	51510

ITEM NO.	PART NO.	DESCRIPTION	QTY.
1	35643	BRAKE BASE PLATE AND STUDS	1
2	35629	BRAKE FIELD SUB-ASSEMBLY	1
3	SEE TABLE	BRAKE COIL	1
4	35600	BRAKE ARMATURE ASSEMBLY	1
5	35069	BRAKE INTERMEDIATE PLATE	1
6	35632	BRAKE FRICTION DISC	2
7	945840	BRAKE STUD NUT	2
8	35704	BRAKE COIL STRAP	1
9	SEE TABLE	BRAKE SPRING	2
10	36704	BRAKE STUD ASSEMBLY	1
11	10001697	SCREW	1
12	982226	LOCKWASHER	1

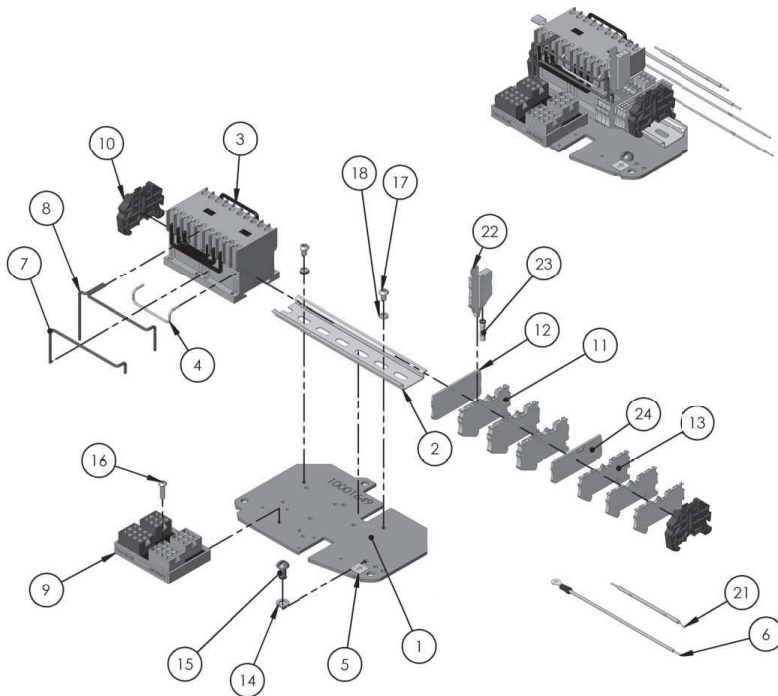
**CONTACTOR PLATE ASSEMBLY FOR USE WITH STANDARD AC BRAKE
1-PHASE 110-115,220-230/1/50-60; 115V CONTROL
MODELS B, C, & F**



ITEM NO.	PART NO.	DESCRIPTION	QTY.
1	10001667	CONTACTOR PLATE ASSEMBLY	1

ITEM NO.	PART NO.	DESCRIPTION	QTY.
1	10001649	V1 CONTACTOR PLATE	1
2	29312	DIN-RAIL 5.00" LONG	1
3	24799	CONTACTOR, REVERSING	1
4	27910	CAPACITOR MOUNTING BRACKET	2
5	27716	CAPACITOR	1
6	29910	CAPACITOR CAP	1
7	27257	REVERSE SWITCH	1
8	27925	SOLID STATE SWITCH CAP	1
9	10001403	QUATTRO FEED-THRU TERMINAL BLOCK	5
10	10001406	QUATTRO END COVER	1
11	10001408	CLIPFIX 35-5 END CLAMP	1
12	10001259	#10-32 x 5/16 BUTTON SKT HEAD	2
13	987873	LOCKWASHER #10	2
14	29916	B2 JUMPER	1
15	29915	B1 JUMPER	1
16	51847	JUMPER	4
17	29911	R5 JUMPER	1
18	29912	R6 JUMPER	1
19	29913	R7 JUMPER	1
20	29914	R8 JUMPER	1
21	27156	R14 JUMPER	1
22	00000321	R13 JUMPER	1
23	10001260	#8-32 X 5/16 BUTTON SKT HEAD	4

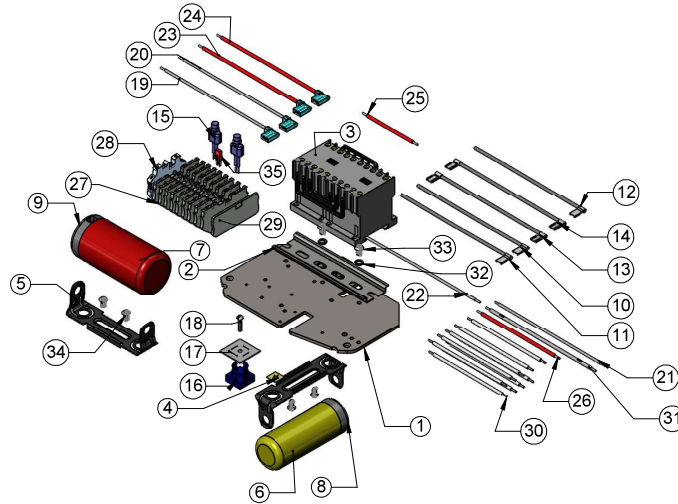
CONTACTOR PLATE ASSEMBLY FOR USE WITH STANDARD AC BRAKE 3-PHASE 220-230,380-460/3/50-60; 24V, 48V, 115V CONTROL MODELS B, C, & F



CONTACTOR BKT S/A	REVERSING CONTACTOR	CONTROL VOLTAGE
10001642	28860	24V
10001643	24797	48V
10001644	24799	110V

ITEM NO.	PART NO.	DESCRIPTION	QTY.
1	10001649	V1 CONTACTOR PLATE	1
2	29010	DIN-RAIL 6.50" LONG	1
3	SEE TABLE	REVERSING CONTACTOR	1
4	51847	JUMPER	1
5	20940	GROUND LABEL	1
6	27189	JUMPER (G-Y)	1
7	00000750	JUMPER WIRE	1
8	00000751	JUMPER WIRE	1
9	10001233	VOLTAGE CHANGE BOARD	1
10	909J13	END CLAMP	2
11	10001404	PT 2,5-TG DISCONNECT TERMINAL BLOCK	3
12	10001407	D-PT 2,5-MT END COVER	1
13	10001403	QUATTRO FEED-THRU TERMINAL BLOCK	3
14	982226	LOCKWASHER 1/4 X .109 X .062	1
15	987827	SCREW 1/4-20 UNC-2A X 1/2"	1
16	10001263	#8-32 X 5/8 BUTTON SKT HEAD	1
17	10001259	#10-32 x 5/16 BUTTON SKT HEAD	2
18	987873	LOCKWASHER #10 ASA MEDIUM	2
21	27645	JUMPER	1
22	10001405	P-FU 5X20-5 FUSE PLUG	1
23	00000393	FUSE-5MM X 20MM-500MA	1
24	10001406	QUATTRO END COVER	1

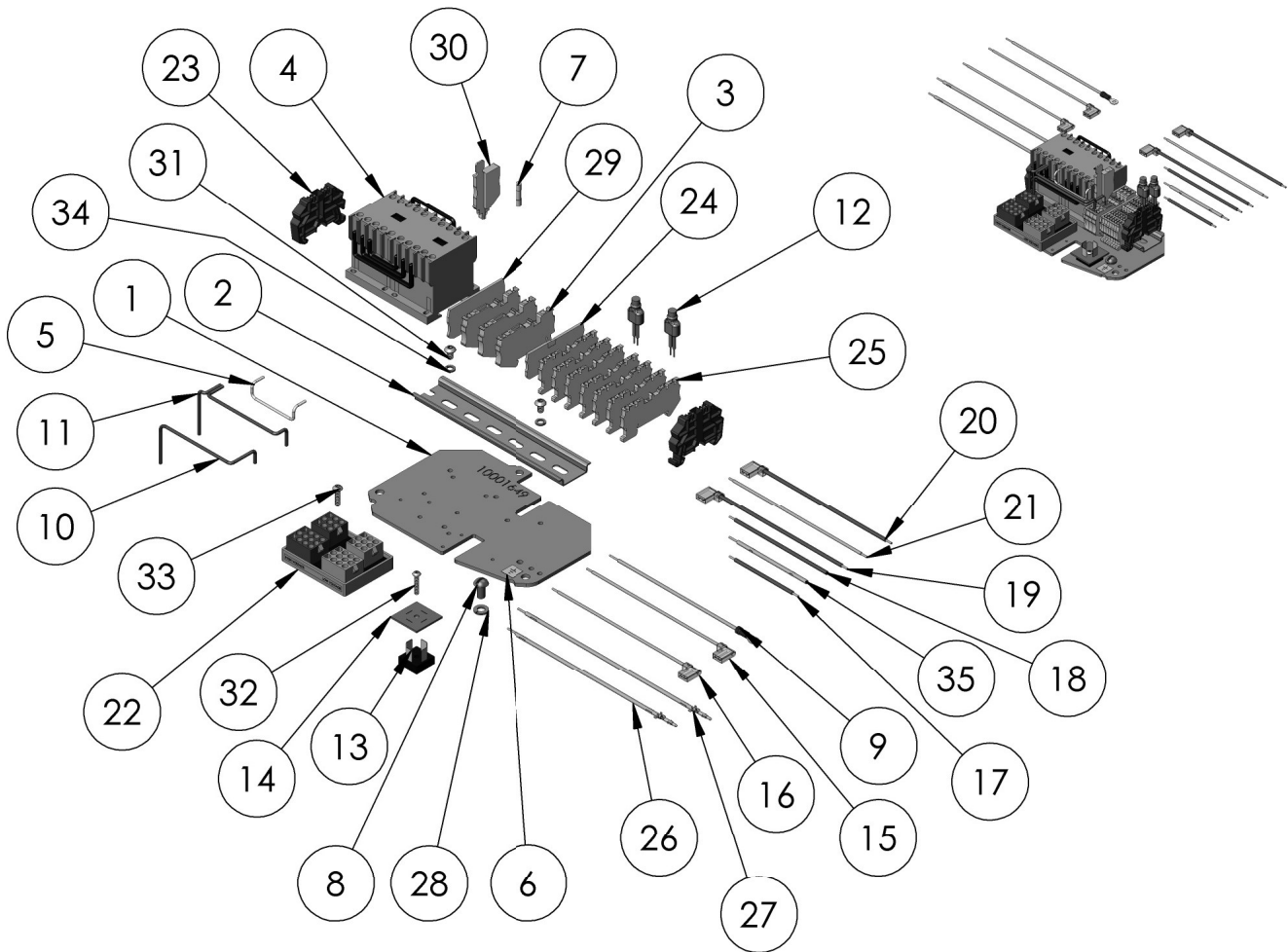
CONTACTOR PLATE ASSEMBLY FOR USE WITH OPTIONAL DC BRAKE 1-PHASE 110-115/1/50-60; 115V CONTROL MODELS B, C, & F



ITEM NO.	PART NO.	DESCRIPTION	QTY.
1	10001672	CONTACTOR PLATE ASSEMBLY	1

ITEM NO.	PART NO.	DESCRIPTION	QTY.
1	10001649	V1 CONTACTOR PLATE	1
2	29010	DIN-RAIL 6.5" LG.	1
3	24799	REVERSING CONTACTOR	1
4	20940	GROUND LABEL	1
5	27910	CAPACITOR MOUNTING BRACKET	2
6	27716	CAPACITOR	1
7	27257	REVERSE SWITCH	1
8	29910	CAPACITOR CAP	1
9	27925	SOLID STATE SWITCH CAP	1
10	27156	JUMPER R14	1
11	29911	JUMPER R5	1
12	29912	JUMPER R6	1
13	29913	JUMPER R7	1
14	29914	JUMPER R8	1
15	00000535	SURGE SUPPRESSOR	2
16	70246	RECTIFIER	1
17	70274	INSULATOR, RECTIFIER	1
18	957854	SCREW #6-32 NC-2 X 5/8" ROUND	1
19	00001500	B3 JUMPER	1
20	00001501	JUMPER - B4	1
21	00001504	B7-JUMPER	1
22	00001502	JUMPER-B1	1
23	00000376	B5 JUMPER	1
24	00000205	B6 JUMPER	1
25	00000537	B8 JUMPER	1
26	00000538	B9 JUMPER	1
27	10001403	QUATTRO FEED-THRU TERMINAL BLOCK	9
28	10001408	CLIPFIX 35-5 END CLAMP	1
29	10001406	QUATTRO END COVER	1
30	51847	JUMPER	9
31	00000321	R13 JUMPER	1
32	987873	LOCKWASHER #10 ASA MEDIUM	2
33	10001259	#10-32 x 5/16 BUTTON SKT HEAD	2
34	10001260	#8-32 X 5/16 BUTTON SKT HEAD	4
35	10001425	JUMPER FBS 2-3,5	1

**CONTACTOR PLATE ASSEMBLY FOR USE WITH OPTIONAL DC BRAKE
3-PHASE 220-230,380-460/3/50-60; 24V, 48V, 115V CONTROL
MODELS B, C, & F**

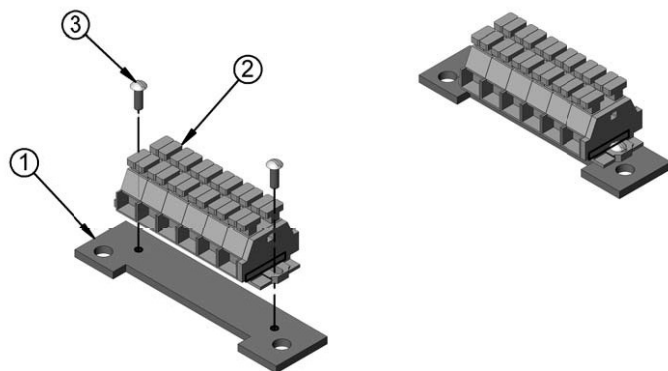


CONTACTOR BKT S/A	REVERSING CONTACTOR	SECONDARY VOLTAGE
10001638	28860	24V
10001639	24797	48V
10001640	24799	115V

ITEM NO.	PART NO.	DESCRIPTION	QTY.
1	10001649	V1 CONTACTOR PLATE	1
2	29010	DIN-RAIL 6.50" LONG	1
3	10001404	PT 2,5-TG DISCONNECT TERMINAL BLOCK	3
4	SEE TABLE	REVERSING CONTACTOR	1
5	51847	JUMPER	1
6	20940	GROUND LABEL	1
7	00000393	FUSE-5MM X 20MM-500MA	1
7	00000394	FUSE-5MM X 20MM-1A	2
8	987827	SCREW 1/4-20 UNC-2A X 1/2"	1
9	27189	JUMPER (G-Y)	1
10	00000750	JUMPER WIRE	1
11	00000751	JUMPER WIRE	1
12	00000535	SURGE SUPPRESSOR	2
13	70246	RECTIFIER	1
14	70274	RECTIFIER INSULATOR	1
15	00001500	B3 JUMPER	1

ITEM NO.	PART NO.	DESCRIPTION	QTY.
16	00001501	B4 JUMPER	1
17	00000537	B8 JUMPER	1
18	00000538	B9 JUMPER	1
19	00000376	B5 JUMPER	1
20	00000205	B6 JUMPER	1
21	00001504	B7-JUMPER	1
22	10001233	VOLTAGE CHANGE BOARD	1
23	909J13	END CLAMP	2
24	10001406	QUATTRO END COVER	1
25	10001403	QUATTRO FEED-THRU TERMINAL BLOCK	7
26	10001651	BRAKE JUMPER	1
27	10001650	BRAKE JUMPER	1
28	982226	LOCKWASHER 1/4 X .109 X .062	1
29	10001407	D-PT 2,5-MT END COVER	1
30	10001405	P-FU 5X20-5 FUSE PLUG	3
31	10001259	#10-32 x 5/16 BUTTON SKT HEAD	2

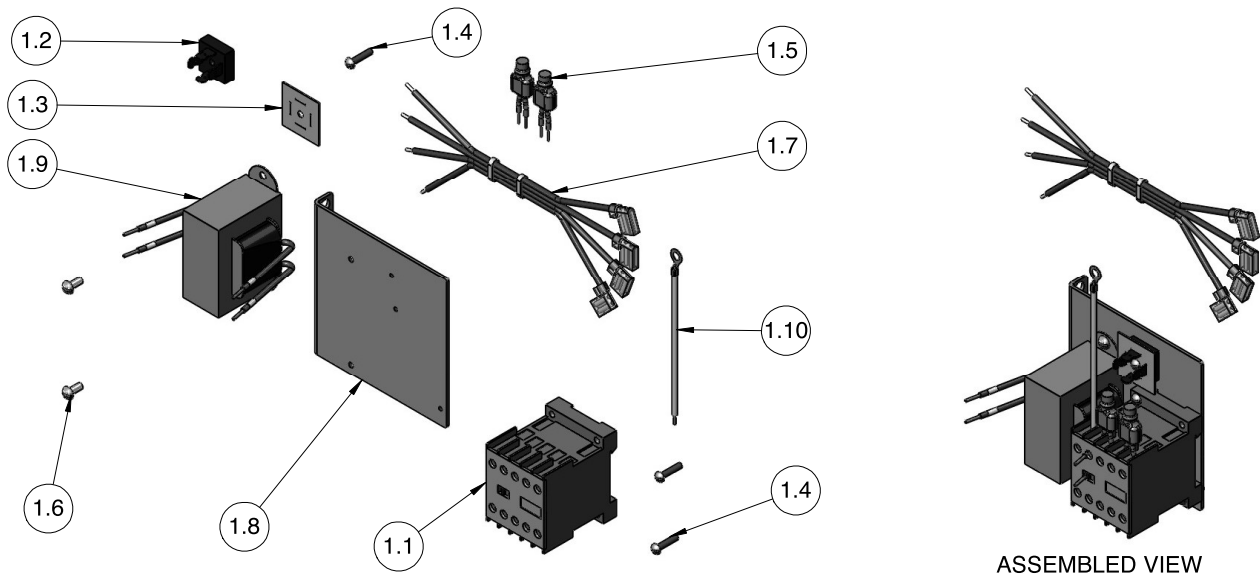
**TERMINAL STRIP ASSEMBLY FOR USE WITH STANDARD AC BRAKE
DIRECT CONTROL 3-PHASE 220-230,380-460/3/50-60
MODELS B, C, & F**



ITEM NO.	PART NO.	DESCRIPTION	QTY.
1	27791	TERMINAL STRIP ASSEMBLY	1

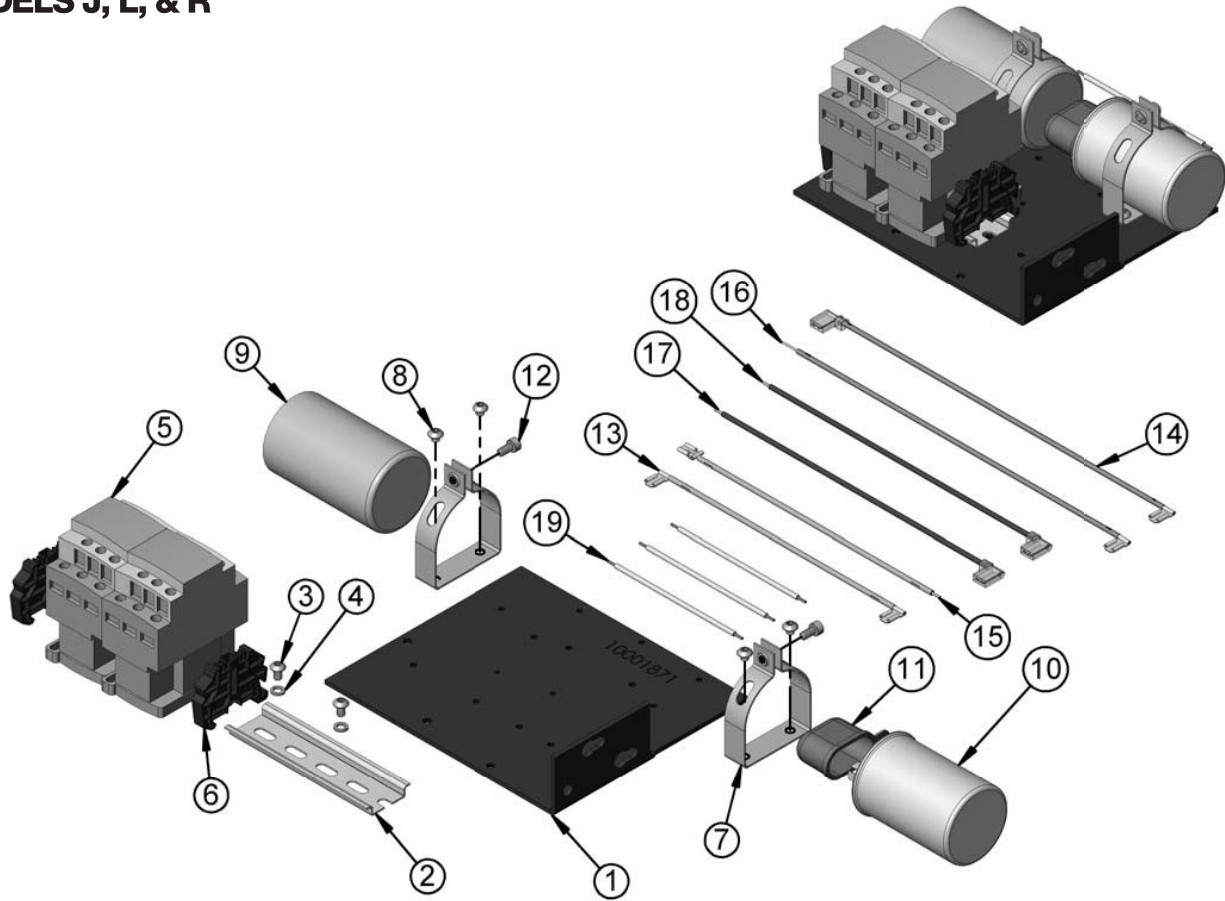
ITEM NO.	PART NO.	DESCRIPTION	QTY.
1	27704	TERMINAL STRIP BRACKET	1
2	27700	6 POLE TERMINAL STRIP	1
3	982718	SCREW	2
4	987929	LOCKWASHER	2

**CONTACTOR PLATE ASSEMBLY FOR USE WITH OPTIONAL DC BRAKE
DIRECT CONTROL 3-PHASE 220-230,380-460/3/50-60
MODELS B, C, & F**



ITEM NO.	PART NO.	DESCRIPTION	QTY.
1	10001121	CONTACTOR PLATE S/A	1
1.1	28902	MAINLINE CONTACTOR	1
1.2	70246	RECTIFIER	1
1.3	70274	INSULATOR, RECTIFIER	1
1.4	10001264	#6-32 X 1/2 BUTTON SKT HEAD SCREW	3
1.5	00000535	SURGE SUPPRESSOR	2
1.6	10001260	#8-32 X 5/16 BUTTON SKT HEAD SCREW	2
1.7	00000326	RECTIFIER HARNESS	1
1.8	10001120	CONTACTOR PLATE	1
1.9	10001119	TRANSFORMER	1
1.10	27189	G-Y JUMPER	1

**CONTACTOR PLATE ASSEMBLY FOR USE WITH STANDARD AC BRAKE
1-PHASE 110-115/1/50-60; 115V CONTROL
MODELS J, L, & R**

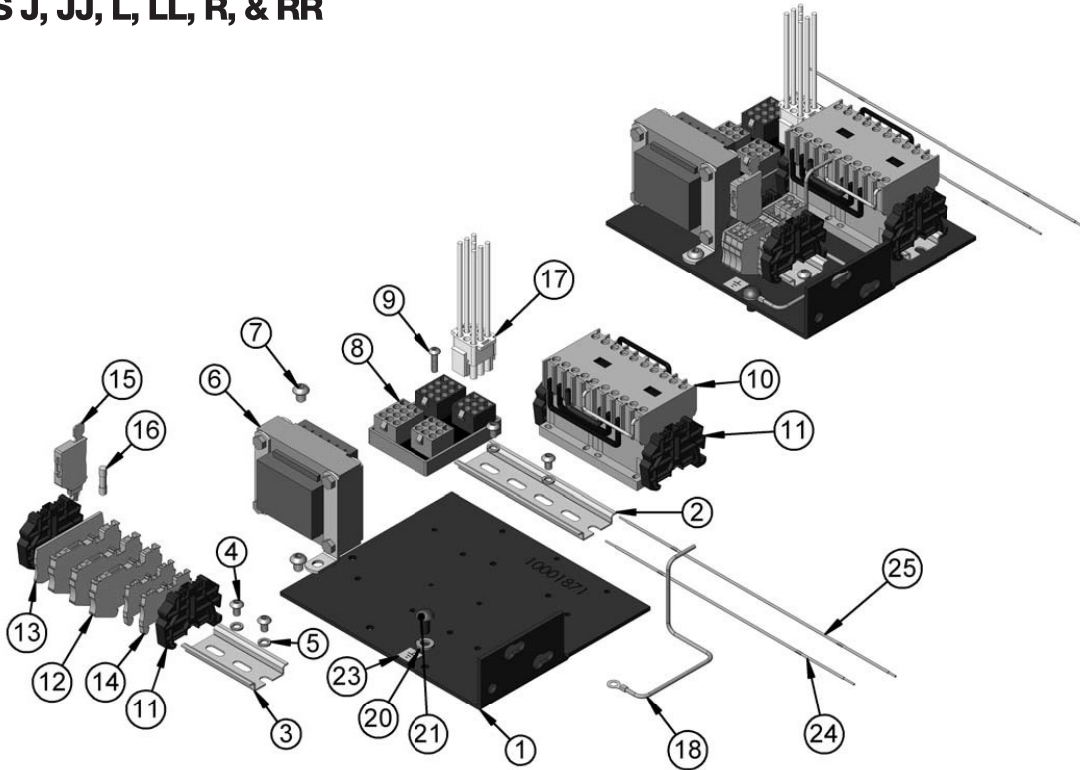


ITEM NO.	PART NO.	DESCRIPTION	QTY.
1	10001788	CONTACTOR PLATE ASSEMBLY	1

ITEM NO.	PART NUMBER	DESCRIPTION	QTY.
1	10001871	V2 CONTACTOR BRACKET CLS	1
2	29009	DIN-RAIL 4.50" LONG	1
3	10001259	#10-32 x 5/16 BUTTON SKT HEAD	2
4	987873	LOCKWASHER #10 ASA MEDIUM	2
5	28905	CONTACTOR, REVERSING	1
6	909J13	END CLAMP	2
7	35268	CLAMP	2
8	10001261	#10-24 X 3/16 BUTTON SKT HEAD	4
9	35279	START CAPACITOR	1
10	35278	CAPACITOR, RUN	1
11	35285	RUN CAPACITOR INSULATOR	1
12	10001266	#10-24 X 3/8" SKT HEAD CAP SCREW LS	2
13	29112	R8 JUMPER	1
14	29035	RUN CAPACITOR	1
15	00000758	JUMPER (R9)	1
16	29034	RUN CAPACITOR	1
17	00000755	JUMPER (R7)	1
18	00000757	JUMPER (R6)	1
19	51847	JUMPER	3
20*	35499	INSTANT REVERSE SINPAC SWITCH	1
21*	27275	CLAMP, SINPAC SWITCH	1
22*	982873	SCREW	1

*Not Shown

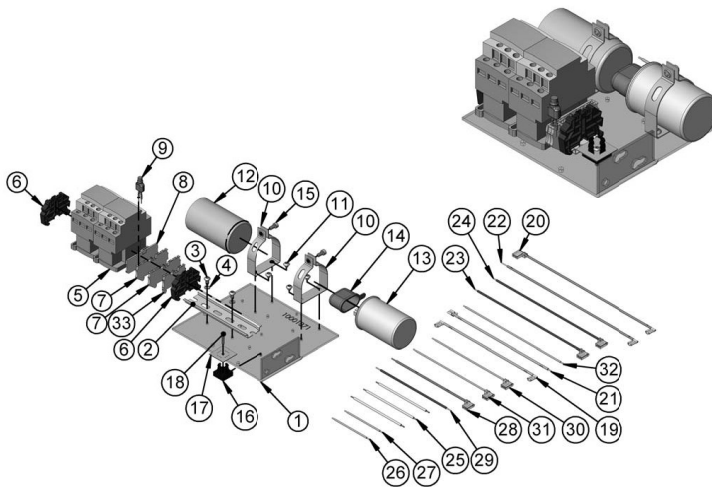
**CONTACTOR PLATE ASSEMBLY FOR USE WITH STANDARD AC BRAKE
3-PHASE 220-230,380-460/3/50-60; 24V, 48V, 115V CONTROL
MODELS J, JJ, L, LL, R, & RR**



CONTACTOR BKT S/A	TRANSFORMER	REVERSING CONTACTOR	CONTROL VOLTAGE
10001780	00000594T	24799	24V
10001781	00000595T	24797	48V
10001782	00000596T	24799	115V

ITEM NO.	PART NUMBER	DESCRIPTION	QTY.
1	10001871	V2 CONTACTOR BRACKET CLS	1
2	29009	DIN-RAIL 4.50" LONG	1
3	29008	DIN RAIL 2.50" LONG	1
4	10001259	#10-32 x 5/16 BUTTON SKT HEAD	4
5	987873	LOCKWASHER #10 ASA MEDIUM	4
6	SEE TABLE	TRANSFORMER	1
7	10001262	1/4-20 X 5/16 BUTTON SKT HEAD	2
8	10001233	VOLTAGE CHANGE BOARD	1
9	10001263	#8-32 X 5/8 BUTTON SKT HEAD	1
10	SEE TABLE	REVERSING CONTACTOR	1
11	909J13	END CLAMP	4
12	10001404	DISCONNECT TERMINAL BLOCK	3
13	10001407	END COVER	1
14	10001401	FEED-THROUGH TERMINAL BLOCK	2
15	10001405	P-FU 5X20-5 FUSE PLUG	1
16	00000393	FUSE-5MM X 20MM-500MA	1
17	00000746	CONTACTOR/TRANSFORMER HARNESS	1
18	27189	JUMPER (G-Y)	1
19	982226	LOCKWASHER 1/4 X .109 X .062	1
20	987827	SCREW 1/4-20 UNC-2A X 1/2"	1
21	51847	JUMPER	1
22	20940	GROUND LABEL	1
23	10001869	H5, JUMPER	1
24	10001870	H6 JUMPER	1

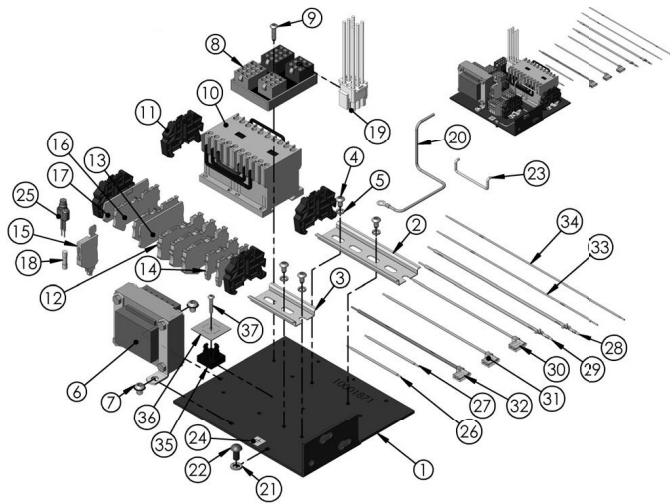
CONTACTOR PLATE ASSEMBLY FOR USE WITH OPTIONAL DC BRAKE 1-PHASE 110-115/1/50-60; 115V CONTROL MODELS J, L, & R



ITEM NO.	PART NO.	DESCRIPTION	QTY.
1	10001790	CONTACTOR PLATE ASSEMBLY	1

ITEM NO.	PART NO.	DESCRIPTION	QTY.
1	10001871	V2 CONTACTOR BRACKET	1
2	29312	DIN-RAIL 5.00" LONG	1
3	10001259	#10-32 x 5/16 BUTTON SKT HEAD	2
4	987873	LOCKWASHER #10	2
5	28905	CONTACTOR, REVERSING	1
6	909J13	END CLAMP	2
7	10001403	QUATTRO FEED-THRU TERMINAL BLOCK	2
8	10001406	QUATTRO END COVER	1
9	00001505	SURGE SUPPRESSOR	1
10	35268	CLAMP	2
11	10001261	#10-24 X 3/16 BUTTON SKT HEAD	4
12	35279	START CAPACITOR	1
13	35278	RUN CAPACITOR	1
14	35285	RUN CAPACITOR INSULATOR	1
15	10001266	#10-24 X 3/8" SKT HEAD CAP SCREW LS	2
16	70246	RECTIFIER	1
17	70274	RECTIFIER INSULATOR	1
18	10001264	#6-32 3/4 BUTTON SKT HEAD	1
19	29914	JUMPER (R8)	1
20	29035	JUMPER (R4)	1
21	27928	JUMPER (R9)	1
22	29034	JUMPER (R10)	1
23	00000755	JUMPER V2 1 PHASE (R7)	1
24	00000757	JUMPER V2 1 PHASE (R6)	1
25	51847	JUMPER	3
26	00000537	JUMPER B8	1
27	00000538	JUMPER B9	1
28	00000376	JUMPER B5	1
29	00000336	JUMPER (R12)	1
30	00001500	JUMPER B3	1
31	00001501	JUMPER B4	1
32	00001503	JUMPER B2	1
33	10001401	TERMINAL BLOCK, FEED-THROUGH	1

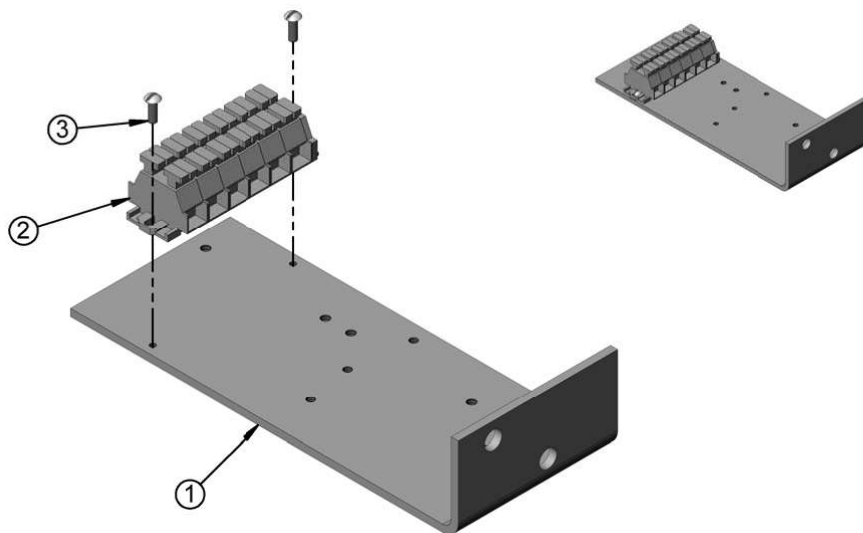
CONTACTOR PLATE ASSEMBLY FOR USE WITH OPTIONAL DC BRAKE 3-PHASE 220-230,380-460/3/50-60 MODELS J, JJ, L, LL, R, & RR



CONTACTOR BKT S/A	TRANSFORMER	REVERSING CONTACTOR	SECONDARY VOLTAGE
10001784	00000549T	28860	24V
10001785	00000595T	24797	48V
10001786	00000596T	24799	110V

ITEM NO.	PART NO.	DESCRIPTION	QTY.
1	10001871	V2 CONTACTOR BRACKET CLS	1
2	29009	DIN-RAIL 4.50" LONG	1
3	29008	DIN RAIL 2.50" LONG	1
4	10001259	#10-32 x 5/16 BUTTON SKT HEAD	4
5	987873	LOCKWASHER #10 ASA MEDIUM	4
6	SEE TABLE	TRANSFORMER	1
7	10001262	1/4-20 X 5/16 BUTTON SKT HEAD	2
8	10001233	VOLTAGE CHANGE BOARD	1
9	10001263	#8-32 X 5/8 BUTTON SKT HEAD	1
10	SEE TABLE	CONTACTOR	1
11	909J13	END CLAMP	4
12	10001404	PT 2,5-TG DISCONNECT TERMINAL BLOCK	3
13	10001407	D-PT 2,5-MT END COVER	1
14	10001401	PT 1,5/S FEED-THROUGH TERMINAL BLOCK	2
15	10001405	P-FU 5X20-5 FUSE PLUG	1
16	10001403	QUATTRO FEED-THRU TERMINAL BLOCK	2
17	10001406	QUATTRO END COVER	1
18	00000393	FUSE-5MM X 20MM-500MA	1
19	00000746	HARNESS-V2-CONTACTOR/XFORMER	1
20	27189	JUMPER (G-Y)	1
21	982226	LOCKWASHER 1/4 X .109 X .062	1
22	987827	SCREW 1/4-20 UNC-2A X 1/2"	1
23	51847	JUMPER	1
24	20940	GROUND LABEL	1
25	00000535	SURGE SUPPRESSOR	1
26	00000537	JUMPER-B8	1
27	00000538	JUMPER B9	1
28	10001650	JUMPER - B1	1
29	10001651	JUMPER - B2	1
30	00001500	B3 JUMPER	1
31	00001501	B4 JUMPER	1
32	00000376	JUMPER 'B5'	1
33	10001869	H5, JUMPER	1
34	10001870	H6 JUMPER	1
35	70246	RECTIFIER	1
36	70274	INSULATOR, RECTIFIER	1

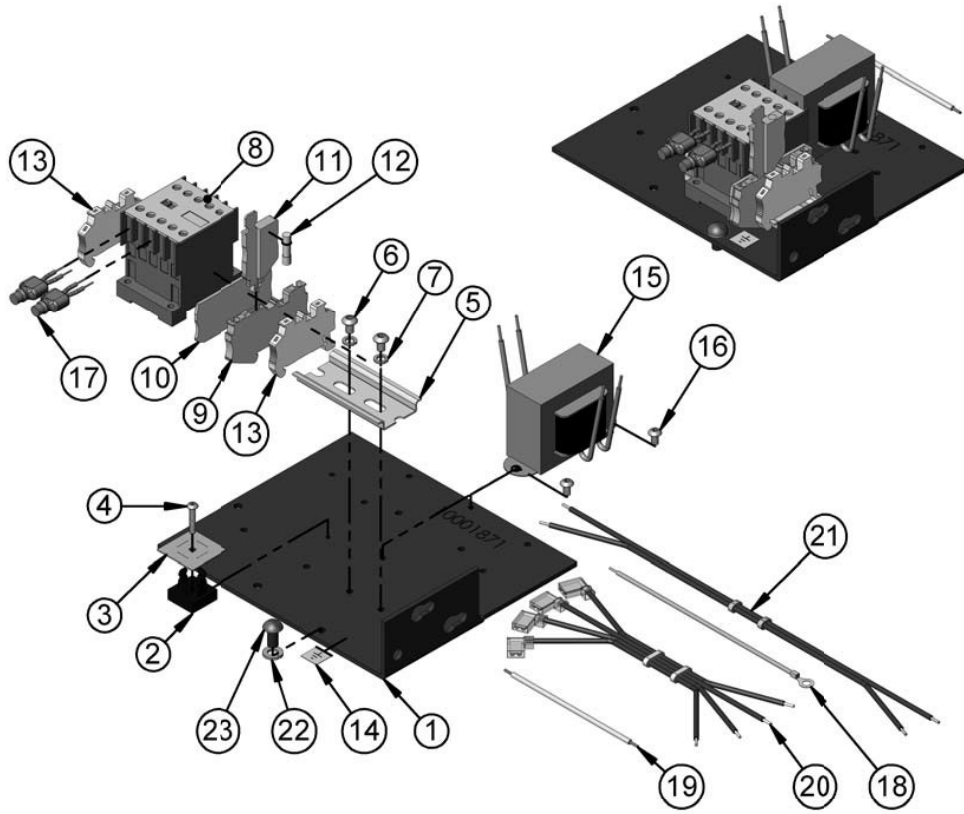
**TERMINAL STRIP ASSEMBLY FOR USE WITH STANDARD AC BRAKE
DIRECT CONTROL 3-PHASE 220-230,380-460/3/50-60
MODELS J, JJ, L, LL, R, & RR**



ITEM NO.	PART NO.	DESCRIPTION	QTY.
1	10001873	TERMINAL STRIP ASSEMBLY	1

ITEM NO.	PART NO.	DESCRIPTION	QTY.
1	31638	CONTACTOR/CAPACITOR	1
2	27700	6 POLE TERMINAL STRIP	1
3	982718	SCREW 627-201	2

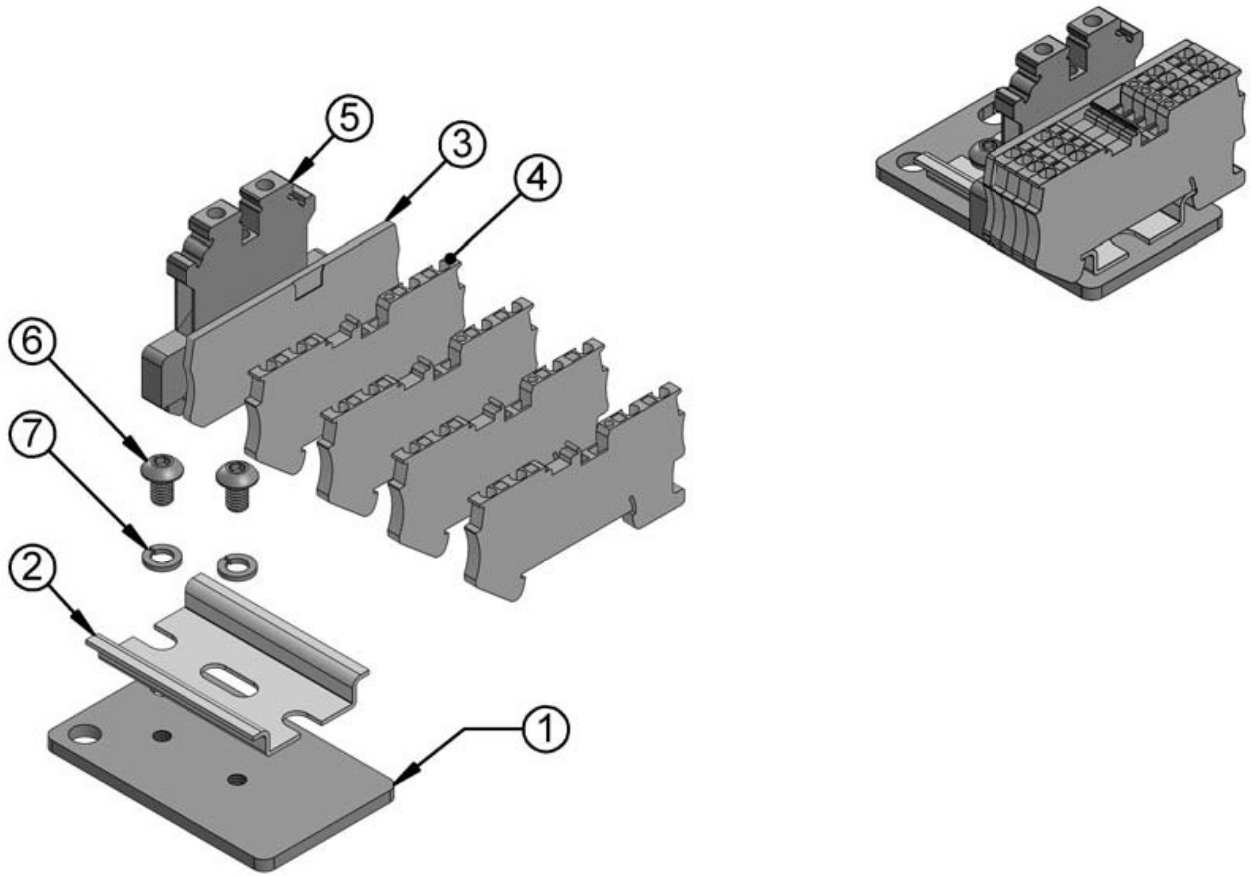
**CONTACTOR PLATE ASSEMBLY FOR USE WITH OPTIONAL DC BRAKE
DIRECT CONTROL 3-PHASE 220-230,380-460/3/50-60
MODELS J, JJ, L, LL, R, & RR**



ITEM NO.	PART NO.	DESCRIPTION	QTY.
1	10001874	CONTACTOR PLATE ASSEMBLY	1

ITEM NO.	PART NUMBER	DESCRIPTION	QTY.
1	10001871	V2 CONTACTOR BRACKET CLS	1
2	70246	RECTIFIER	1
3	70274	INSULATOR, RECTIFIER	1
4	10001264	#6-32 3/4 BUTTON SKT HEAD	1
5	00000323	DIN RAIL 2.75" LONG	1
6	10001259	#10-32 x 5/16 BUTTON SKT HEAD	2
7	987873	LOCKWASHER #10 ASA MEDIUM	2
8	28902	CONTACTOR, NON-REVERSING	1
9	10001404	PT 2,5-TG DISCONNECT TERMINAL BLOCK	1
10	10001407	D-PT 2,5-MT END COVER	1
11	10001405	P-FU 5X20-5 FUSE PLUG	1
12	00000939	FUSE-5MM X 20MM-500MA	1
13	10001408	CLIPFIX 35-5 END CLAMP	2
14	20940	GROUND LABEL	1
15	10001114	TRANSFORMER	1
16	10001260	#8-32 X 5/16 BUTTON SKT HEAD	2
17	00000535	VOLTAGE SUPPRESSOR	2
18	00001722	JUMPER (G-Y)	1
19	51847	JUMPER	1
20	00000326	RECTIFIER HARNESS	1
21	10001117	WIRING HARNESS, B5/B6	1
22	982226	LOCKWASHER 1/4 X .109 X .062	1
23	987827	SCREW 1/4-20 UNC-2A X 1/2"	1

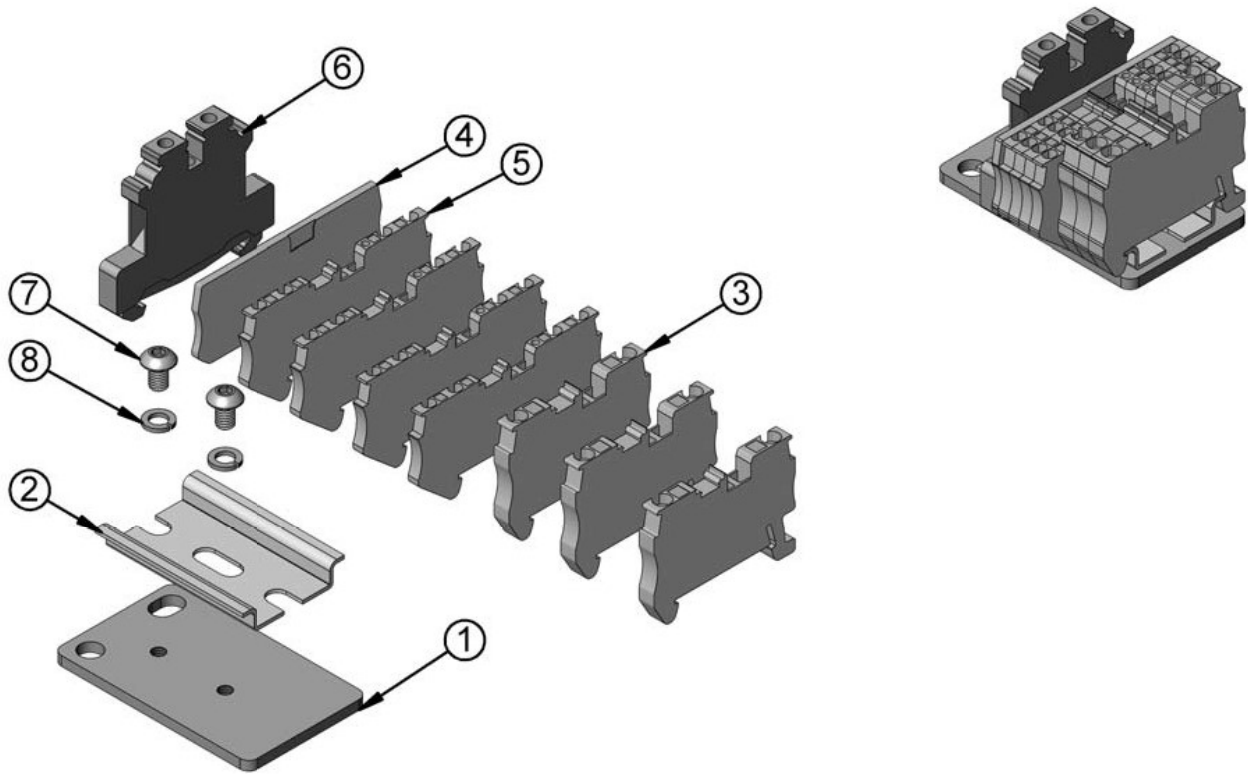
TERMINAL STRIP ASSEMBLY FOR USE WITH STANDARD AC BRAKE
1-PHASE 110-115/1/50-60
MODELS J, L, & R



ITEM NO.	PART NO.	DESCRIPTION	QTY.
1	10001235	TERMINAL STRIP ASSEMBLY	1

ITEM NO.	PART NUMBER	DESCRIPTION	QTY.
1	10001409	MOUNTING BRACKET	1
2	10001466	DIN-RAIL 2.0" LONG	1
3	10001406	QUATTRO END COVER	1
4	10001403	QUATTRO FEED-THRU TERMINAL BLOCK	4
5	10001433	GROUNDING BLOCK GREEN/YELLOW	1
6	10001259	#10-32 x 5/16 BUTTON SKT HEAD	2
7	987873	LOCKWASHER #10 ASA MEDIUM	2
8	10001408	END CLAMP	1

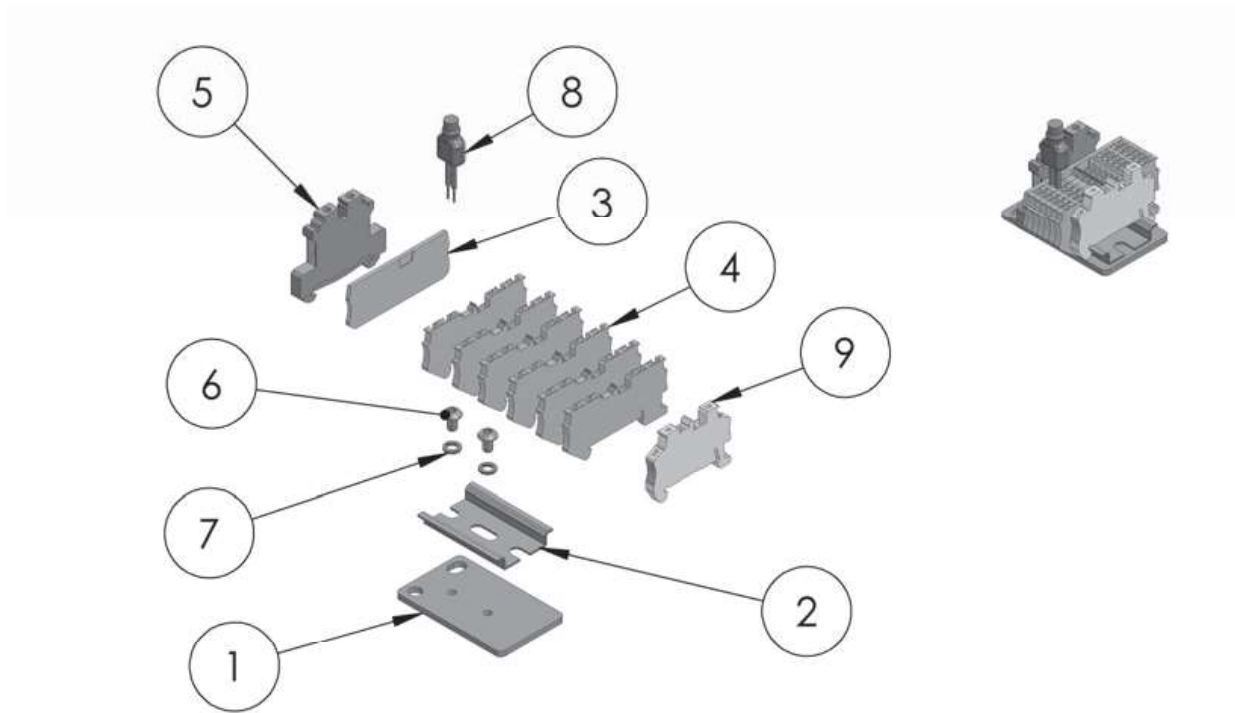
TERMINAL STRIP ASSEMBLY FOR USE WITH STANDARD AC BRAKE
3-PHASE 220-230,380-460/3/50-60
MODELS J, JJ, L, LL, R, & RR



ITEM NO.	PART NO.	DESCRIPTION	QTY.
1	10001271	TERMINAL STRIP ASSEMBLY	1

ITEM NO.	PART NUMBER	DESCRIPTION	QTY.
1	10001409	MOUNTING BRACKET	1
2	10001466	DIN-RAIL 2.0" LONG	1
3	10001424	TERMINAL BLOCK-FEED THRU	3
4	10001406	QUATTRO END COVER	1
5	10001403	QUATTRO FEED-THRU TERMINAL BLOCK	4
6	10001433	GROUNDING BLOCK GREEN/YELLOW	1
7	10001259	#10-32 x 5/16 BUTTON SKT HEAD	2
8	987873	LOCKWASHER #10 ASA MEDIUM	2
9	10001408	END CLAMP	1

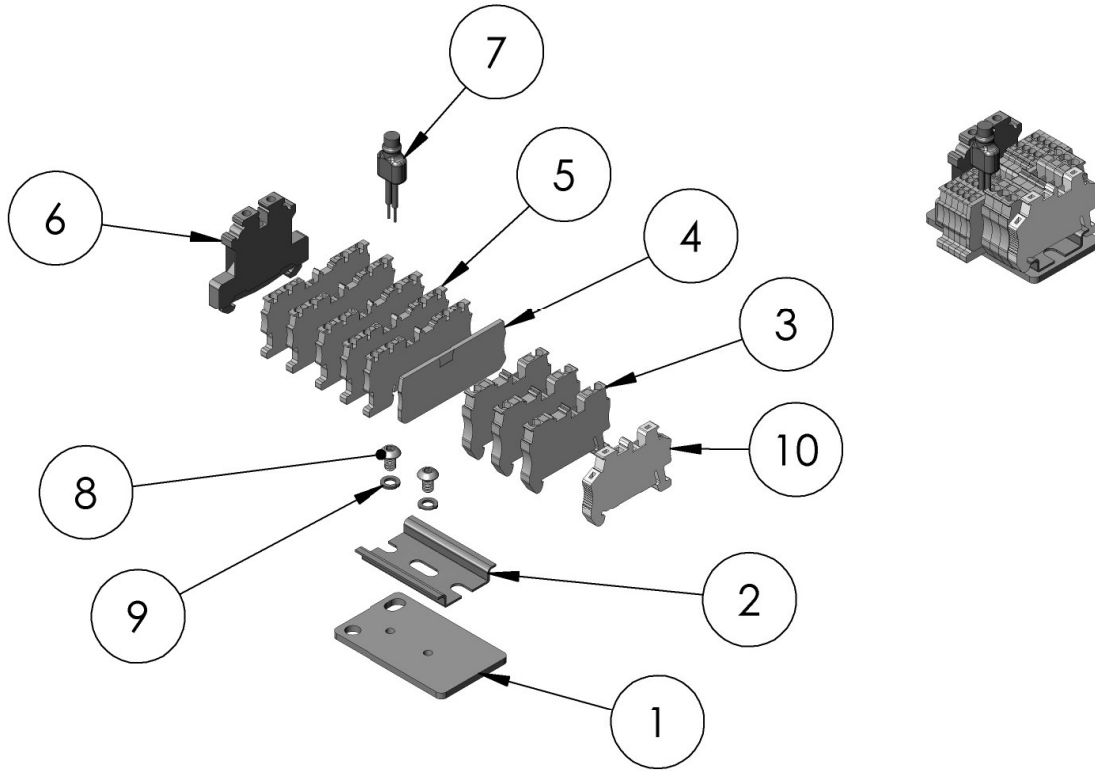
**TERMINAL STRIP ASSEMBLY FOR USE WITH OPTIONAL DC BRAKE
1-PHASE 110-115/1/50-60
MODELS J, L, & R**



ITEM NO.	PART NO.	DESCRIPTION	QTY.
1	10001234	TERMINAL STRIP ASSEMBLY	1

ITEM NO.	PART NUMBER	DESCRIPTION	QTY.
1	10001409	MOUNTING BRACKET	1
2	10001466	DIN-RAIL 2.0" LONG	1
3	10001406	QUATTRO END COVER	1
4	10001403	QUATTRO FEED-THRU TERMINAL BLOCK	6
5	10001433	GROUNDING BLOCKGREEN/YELLOW	1
6	10001259	#10-32 x 5/16 BUTTON SKT HEAD	2
7	987873	LOCKWASHER #10	2
8	00000535	SURGE SUPPRESSOR	1
9	10001408	CLIPFIX 35-5 END CLAMP	1

TERMINAL STRIP ASSEMBLY FOR USE WITH OPTIONAL DC BRAKE
3-PHASE 220-230,380-460/3/50-60
MODELS J, JJ, L, LL, R, & RR



ITEM NO.	PART NO.	DESCRIPTION	QTY.
1	10001270	TERMINAL STRIP ASSEMBLY	1

ITEM NO.	PART NUMBER	DESCRIPTION	QTY.
1	10001409	MOUNTING BRACKET	1
2	10001466	DIN-RAIL 2.0" LONG	1
3	10001424	TERMINAL BLOCK-FEED THRU	3
4	10001406	QUATTRO END COVER	1
5	10001403	QUATTRO FEED-THRU TERMINAL BLOCK	5
6	10001433	GROUNDING BLOCKGREEN/YELLOW	1
7	00000535	SURGE SUPPRESSOR	1
8	10001259	#10-32 x 5/16 BUTTON SKT HEAD	2
9	987873	LOCKWASHER #10 ASA MEDIUM	2
10	10001408	CLIPFIX 35-5 END CLAMP	1